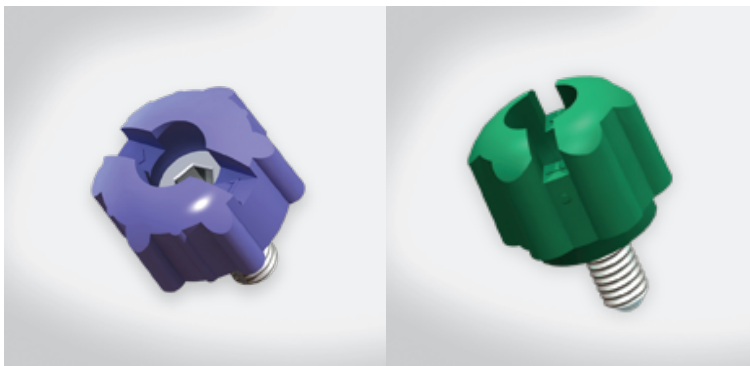


- Special hand-screwing design
- Optional colors available

50, 53 SERIES

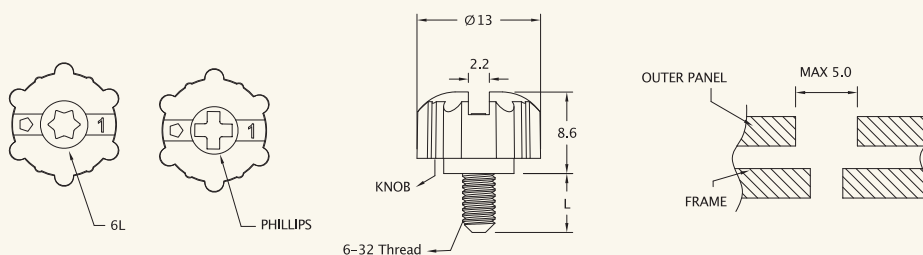


Material and Finish

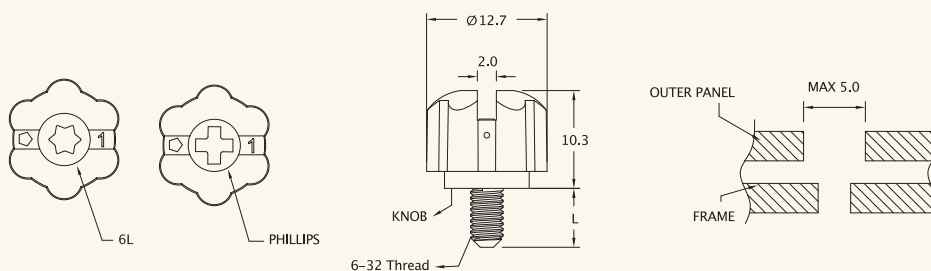
Knob:
Plastic, ABS

Screw:
400 Series stainless steel, passivated.

50 Series



53 Series



50 Series

Recess Style	Screw Length L	PART NUMBER									
		BLACK	GREEN	ORANGE	PURPLE	BLUE	LIGHT BLUE	IRON GRAY	RED		
6-32	6L T15	6.2	50-463-01	50-463-02	50-463-03	50-463-04	50-463-05	50-463-06	50-463-07	50-463-08	
		7.8	50-473-01	50-473-02	50-473-03	50-473-04	50-473-05	50-473-06	50-473-07	50-473-08	
	Phillips #2	6.2	50-462-01	50-462-02	50-462-03	50-462-04	50-462-05	50-462-06	50-462-07	50-462-08	
		7.8	50-472-01	50-472-02	50-472-03	50-472-04	50-472-05	50-472-06	50-472-07	50-472-08	

53 Series

Recess Style	Screw Length L	PART NUMBER									
		BLACK	GREEN	ORANGE	PURPLE	BLUE	LIGHT BLUE	IRON GRAY	RED		
6-32	6L T15	6.2	53-463-01	53-463-02	53-463-03	53-463-04	53-463-05	53-463-06	53-463-07	53-463-08	
		7.8	53-473-01	53-473-02	53-473-03	53-473-04	53-473-05	53-473-06	53-473-07	53-473-08	
	Phillips #2	6.2	53-462-01	53-462-02	53-462-03	53-462-04	53-462-05	53-462-06	53-462-07	53-462-08	
		7.8	53-472-01	53-472-02	53-472-03	53-472-04	53-472-05	53-472-06	53-472-07	53-472-08	

51,52,54 series aluminum steel made color hand-screwing bolt, with features of aluminum made grip, steel bolt, and special hand-screwing design

- Aluminum made hand-screwing head to enhance the appearance
- Multiple surface colors processing to meet customers' demands
- Steel made bolt to solve the problem of chip, insufficient torque, pulling force and shear force due to softness of aluminum made bolt
- The bolt specification, head, and color could be customized

51, 52, 54 SERIES

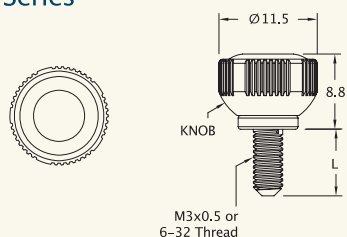


Material and Finish

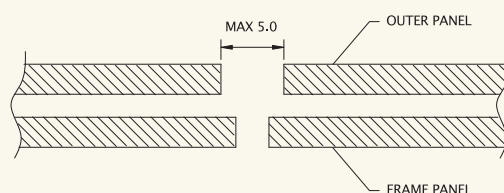
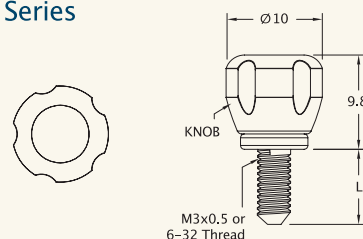
Knob:
6000 Series aluminum.

Screw:
Low carbon steel, zinc finish.

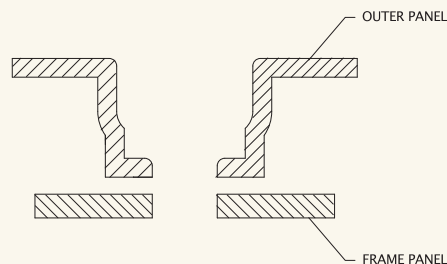
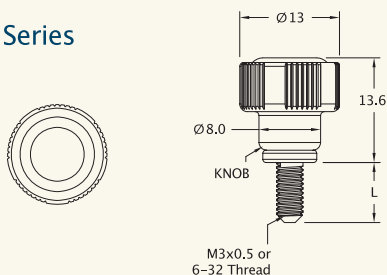
■ 51 Series



■ 52 Series



■ 54 Series



■ Dimensions

mm

Thread	Screw Length L	PART NUMBER							
		BLACK	BLUE	YELLOW	RED	GREEN	PURPLE	IRON GRAY	ORANGE
M3	5.2	51-15-01	51-15-02	51-15-03	51-15-04	51-15-05	51-15-06	51-15-07	51-15-08
		52-15-01	52-15-02	52-15-03	52-15-04	52-15-05	52-15-06	52-15-07	52-15-08
		54-15-01	54-15-02	54-15-03	54-15-04	54-15-05	54-15-06	54-15-07	54-15-08
6-32	7.8	51-47-01	51-47-02	51-47-03	51-47-04	51-47-05	51-47-06	51-47-07	51-47-08
		52-47-01	52-47-02	52-47-03	52-47-04	52-47-05	52-47-06	52-47-07	52-47-08
		54-47-01	54-47-02	54-47-03	54-47-04	54-47-05	54-47-06	54-47-07	54-47-08