

Spring Lock

- Fast operation, can be locked/unlocked by hand without tools.
- Spring design absorbs tolerances and positions two boards.
- The spring lock's spring mechanism enables flexible coverage of diverse thicknesses.
- Ensures that boards of different thicknesses, tolerances, and curved or uneven, can achieve flexible interlocking.
- Anti-loose function to combine two plates, and provide clamping force.
- A wide range of applications and specs can be customized.

Spring Lock

Patented.



Material and Finish

FERRULE: CARBON STEEL, ZINC FINISH.

CAP: 300 SERIES STAINLESS STEEL, NATURAL FINISH.

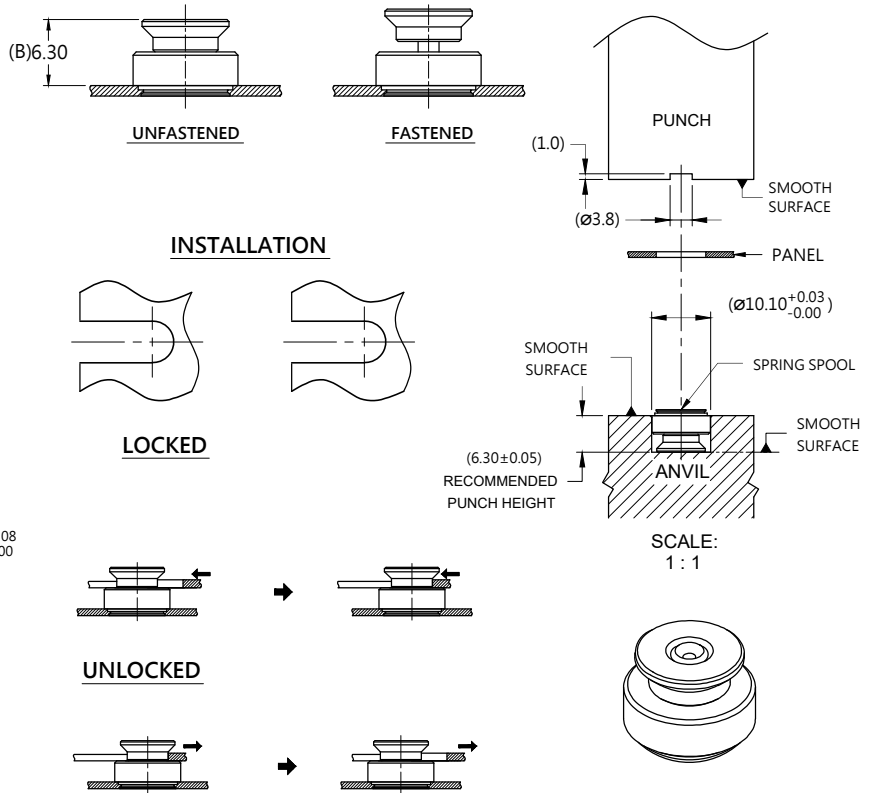
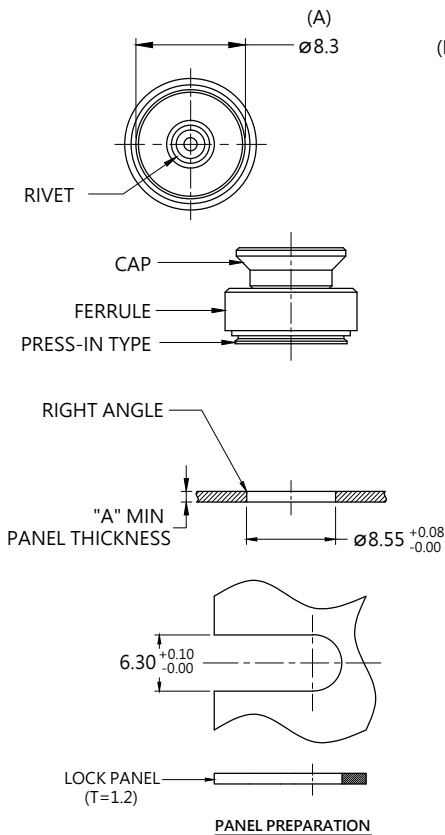
RIVET: 300 SERIES STAINLESS STEEL, NATURAL FINISH.

SPRING: 300 SERIES STAINLESS STEEL, NATURAL FINISH.

OPERATING RESTRICTION:

ONLY THE HORIZONTAL DIRECTION OPERATION AND OPERATING FORCE :

Panel Preparation



Dimensions (mm)

LENGTH "T"	PROJECTION		PANEL THICKNESS		DIMENSIONS	
	"H-1"	"H-2"	"A" MIN	"A" MAX	" L "	" B "
~			1.0	~		