

## SMT Series

- Provides the function of supporting and elevating the PCB.
- Reduce the PCB damage risk caused during assembling.
- Reliable and stable fully automated SMT soldering with wide applications.
- SMT automation saves labor costs, improves yield, and boosts efficiency.
- Custom design services available in various forms.

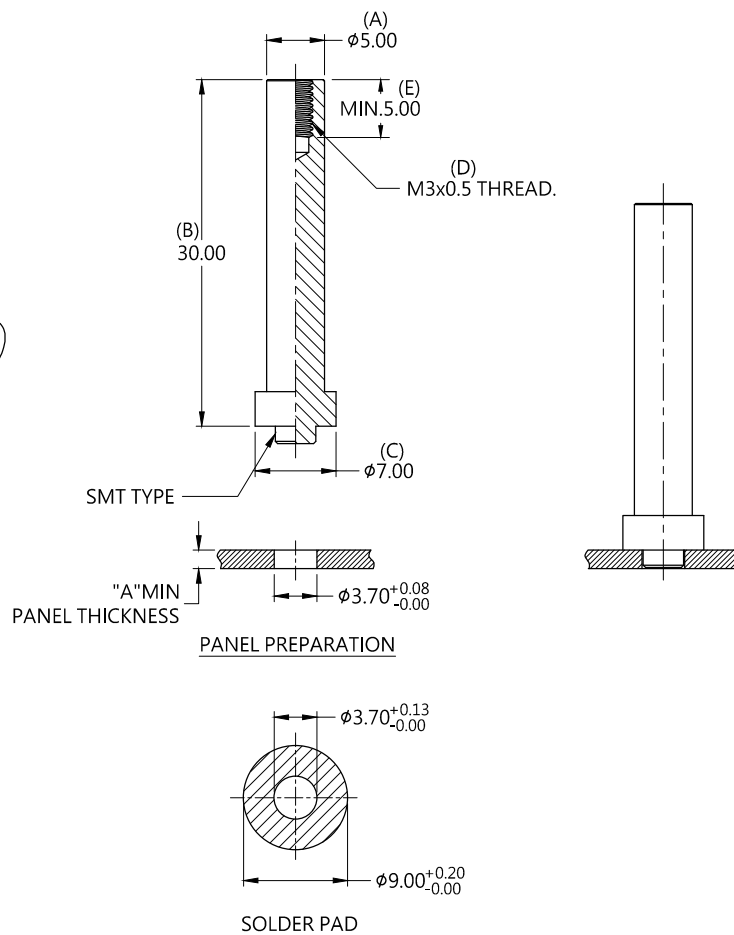
## SMT Spacer Patented.



### Material and Finish

PIN : Carbon Steel , Tin Finish

### Panel Preparation



### Dimensions (mm)

LENGTH "T"	PROJECTION		PANEL THICKNESS		DIMENSIONS	
	"P-1"	"P-2"	"A"MIN	"A"MAX	" L "	" B "
~	~	~	1.6	~		