

## SMT SERIES

- Provides different axial locking direction, reducing the number of parts and saving more space
- Leading end is chamfered to prevent rotation, enhancing the reliability
- Two-sides locking to provide applications with less limit
- Automated production improves stability and reduce labor cost

## SMT Angle Lock Patented.



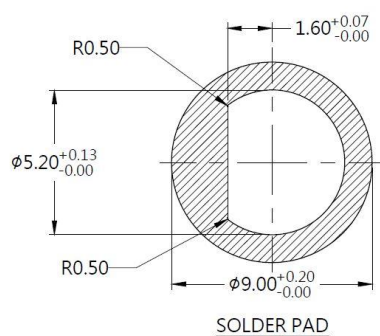
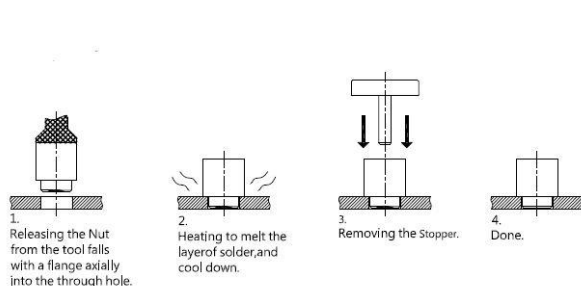
### Material and Finish

**Nut :**  
Carbon Steel, Tin Finish

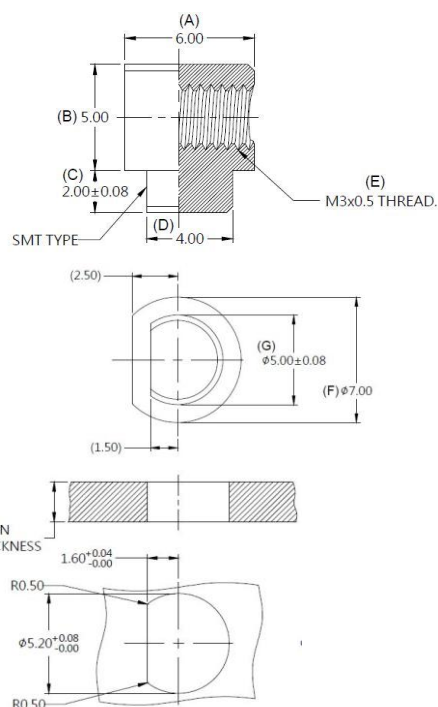
### Reel



### Installation



### Panel Preparation



### Dimensions (mm)

LENGTH " T "	PROJECTION		PANEL THICKNESS		DIMENSINOS	
	" P-1 "	" P-2 "	" A " MIN	" A " MAX	" L "	" B "
~	~	~	2.1	~	~	~

## ANGLE SERIES

- Innovative angled fastening function
- Designed for flexible angle installing directions
- Offers diverse locking angles for chassis designs
- Latch plunger offers tool-less, quick assembly, efficient in performance

### ANGLE SMT LATCH PLUNGER

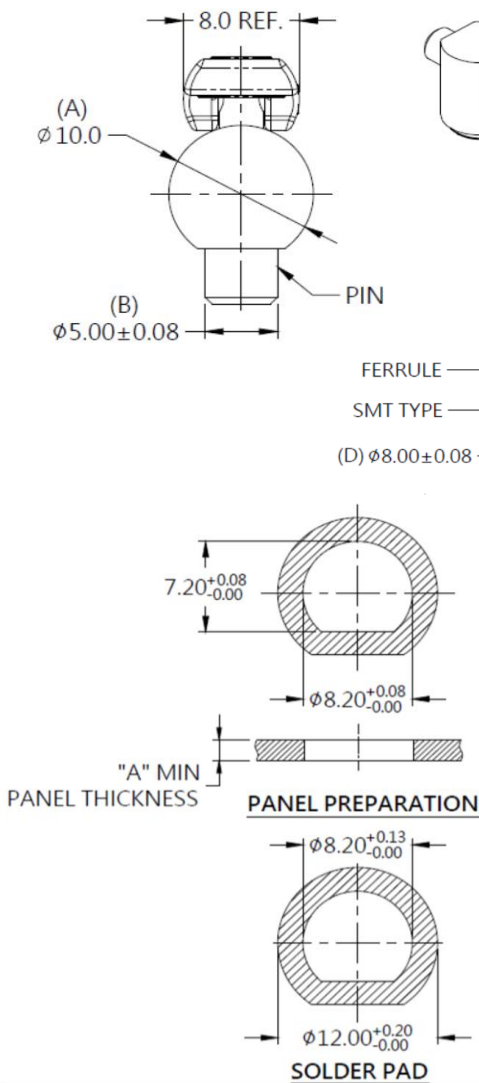
Patented.



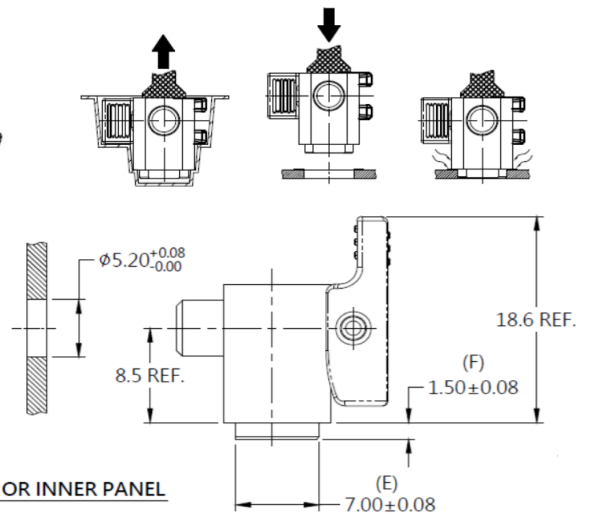
#### Material and Finish

**WRENCH :**  
PLASTIC : PANTONE 376C (GREEN).  
**RIVET :**  
300 SERIES STAINLESS STEEL , NATURAL FINISH.  
**PIN :**  
CARBON STEEL , ZINC FINISH.  
**SPRING :**  
300 SERIES STAINLESS STEEL , NATURAL FINISH.  
**FERRULE :**  
CARBON STEEL , ZINC FINISH.

#### Panel Preparation



#### Installation



#### Dimensions (mm)

LENGTH "T"	PROJECTION		PANEL THICKNESS		DIMENSINOS	
	"H-1"	"H-2"	"A" MIN	"A" MAX	" L "	" B "
17.8	13.8	25.7	1.6	~	~	~

Copyright © Since 2007-2018 Fivetech Technology Inc. All Right Reserved.

## SMT SERIES

- Automatic rebound function provides clamping force and achieves anti-loosening
- The spring can absorb tolerances of the upper and lower panels, providing a perfect operating feeling
- The angle design fulfills quick-release in different axial directions
- SMT fully automated manufacturing process can increase production stability and production efficiency

## SMT Angle Spring Lock Patented.



### Material and Finish

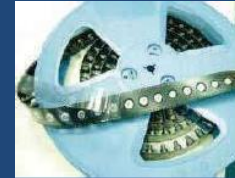
**Cap :**  
300 Series Stainless Steel, Natural Finish.

**Rivet :**  
300 Series Stainless Steel, Natural Finish.

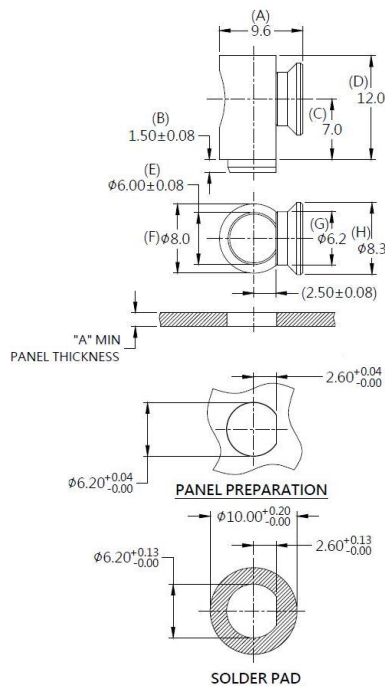
**Ferrule :**  
Carbon Steel, Tin Finish.

**Spring :**  
300 Series Stainless Steel, Natural Finish.

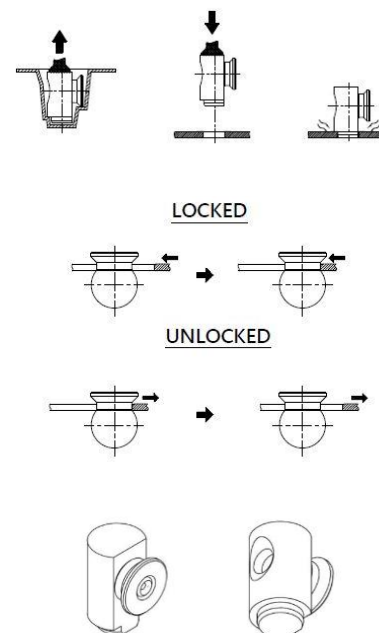
### Reel



### Panel Preparation



### Installation Style



### Dimensions (mm)

LENGTH "T"	PROJECTION		PANEL THICKNESS		DIMENSINOS	
	"H-1"	"H-2"	"A" MIN	"A" MAX	" L "	" B "
			1.6	~		