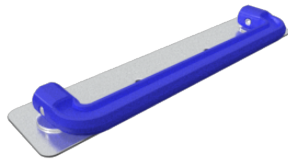


SMART FOLDING HANDLE

- Modular design, easily secured with screws for reliable installation.
- 90° folding positioning, prevent shaking and noise.
- Folded when stored, saves space.
- High-temperature resistant suitable for installation on water cooling plates.
- Color, pitch, length, size, and other specifications can be customized.

Smart Folding Handle Module-Thread in

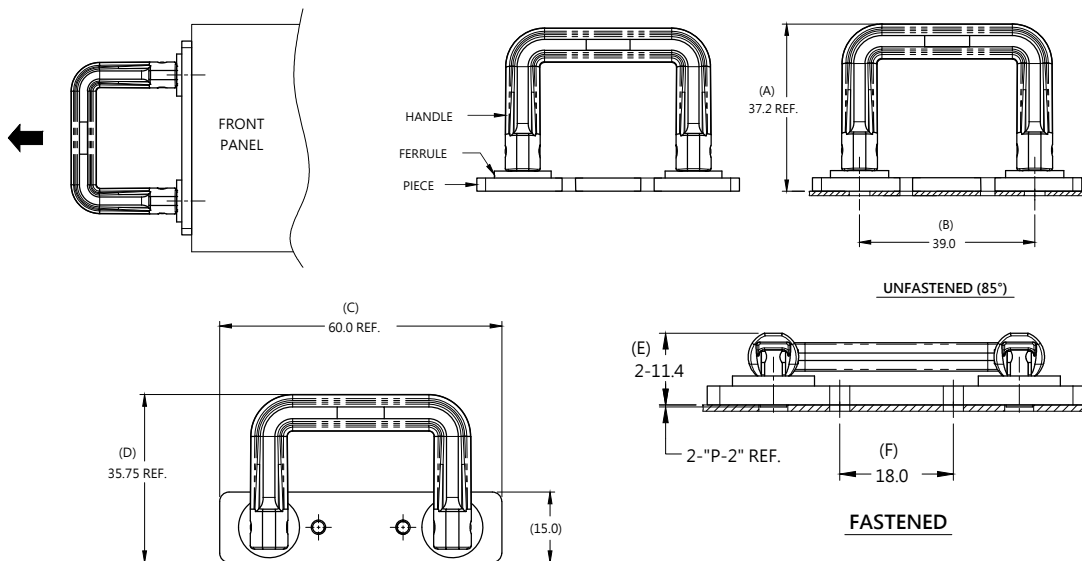
Patented.



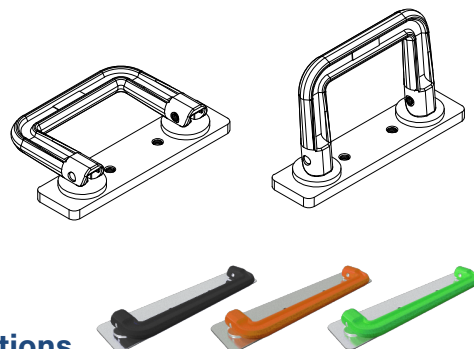
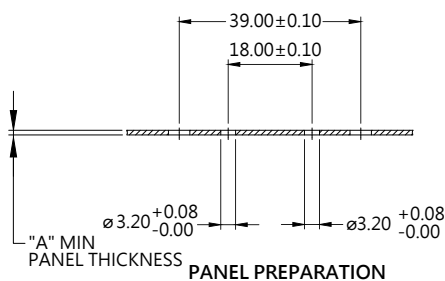
Material and Finish

HANDLE : PLASTIC
RIVET : STAINLESS STEEL
PIN : CARBON STEEL
SPRING : STAINLESS STEEL
FERRULE : CARBON STEEL
PIECE : CARBON STEEL

Installation Style



Panel Preparation



Color Options

01 02 03 04 05 06 07 08 09 00

Dimensions(mm)

LENGTH "T"	HANDLE PROJECTION		PANEL THICKNESS		DIMENSIONS	
	" P-1 "	"P-2"	"A" MIN	"A" MAX	" L "	" B "
		0.3	1.0	~		