

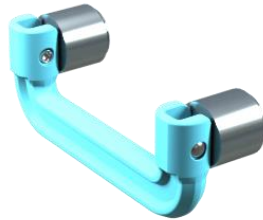
SMART FOLDING HANDLE

The unique spring-loaded mechanism designed is to fixed and steady its rebound position, to solve the disturbing noise emitted by vibration.

90-degree positioning, lightweight, user-friendly.

Plastic can be customized for identity color, and the degree of pull can be customized according to the needs.

SMART FOLDING HANDLE – PRESS IN Patented.



Material and Finish

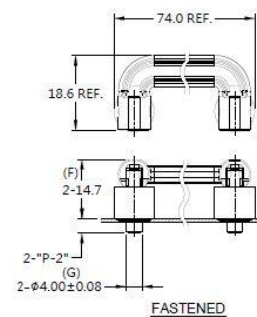
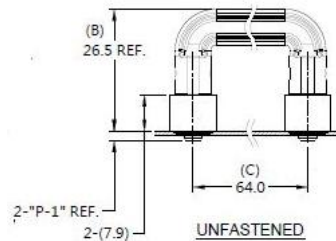
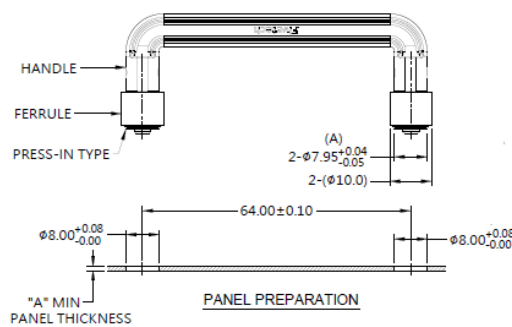
Handle:
Plastic

Pin / Rivet:
300 Series Stainless Steel, Natural Finish.

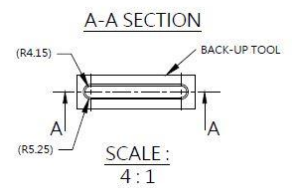
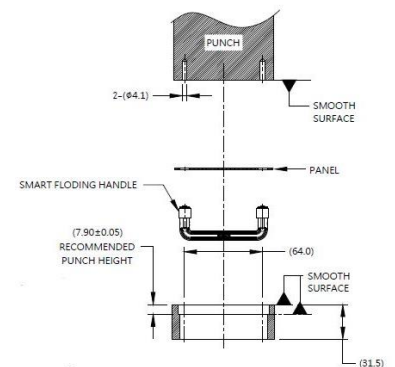
Spring :
300 Series Stainless Steel, Natural Finish.

Ferrule :
Carbon Steel, Zinc Finish.

Panel preparation



Installation Style



Knob Color Options



Dimensions (mm)

PN	HANDLE PROJECTION		PANEL THICKNESS	
	P1	P2	"A"MIN	"A"MAX
62-57P-064-0-07-1	2.0	3.6	1.0	~

SMART FOLDING HANDLE

- A fully automated production line saves labor costs and improves production efficiency
- 90-degree positioning, prevent shaking and noise
- Folded when stored, saves space
- Plastic-made handle can improve heat resistance and electrical resistance
- Color, pitch, length, size, and other specifications can be customized

Smart Folding Handle- Flare-in Patented.



Material and Finish

Handle :

Plastic

Rivet:

300 Series Stainless Steel, Natural Finish

Ferrule :

6000 Series Aluminum, Natural Finish

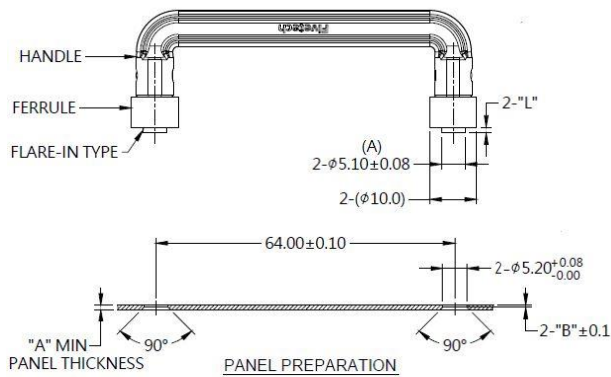
Pin :

Carbon Steel, Zinc Finish

Spring :

300 Series Stainless Steel, Natural Finish

Panel Preparation

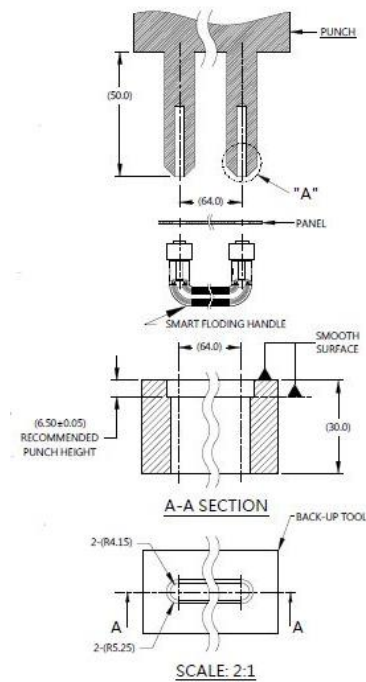


Color Options

Color Options



Installation



Dimensions (mm)

LENGTH " T "	HANDLE PROJECTION		PANEL THICKNESS		DIMENSINOS	
	" P-1 "	" P-2 "	" A " MIN	" A " MAX	" L "	" B "
	0.3	1.9	1.0	~	1.2	0.4

SMART FOLDING HANDLE

- 0 to 90 degrees fold/pull to lock/unlock user-friendly tool.
- All the material, color, size & pitch spec can be spec made.

SMART FOLDING HANDLE



Material and Finish

Handle :
Plastic.

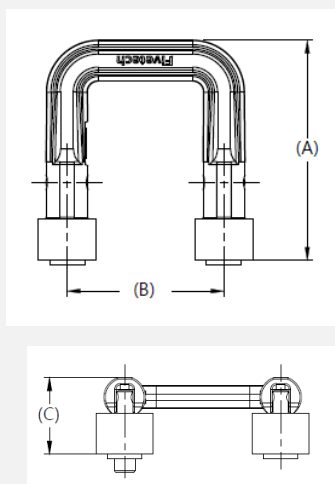
Rivet :
300 series stainless steel, natural finish.

Pin :
Carbon steel, zinc finish.

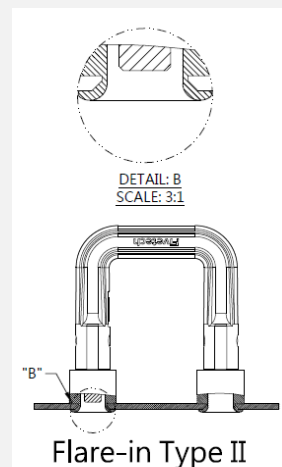
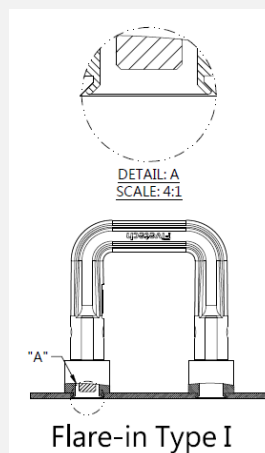
Spring :
300 series stainless steel, natural finish.

Ferrule :
6000 series aluminum, natural finish.

Panel Preparation

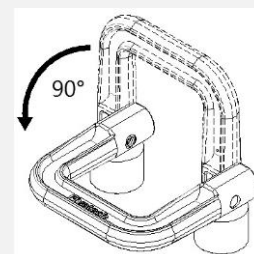


Installation Style



Dimensions

Type	OUTER PANEL DIMENSIONS		(A)	(B)		(C)
	A MIN	A MAX		A MIN	A MAX	
Flare-in I	0.8	-	42	30	80	14.7
Flare-in II	0.8	-	42	30	80	14.7



Handle Color Options



SMART FOLDING HANDLE

- Unique spring-loaded mechanism designed is to fixed and to steady its rebound position, to solve the disturbing noise emitted by vibration.
- 0 to 90 degrees fold/pull to lock/unlock user-friendly tool.
- All the material, color, size & pitch spec can be spec made.

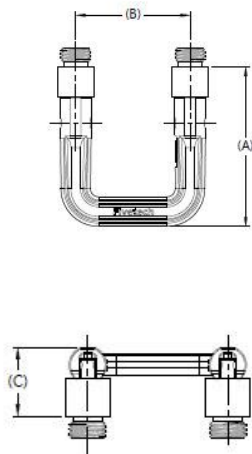
SMART FOLDING HANDLE - THREAD-IN Patented.



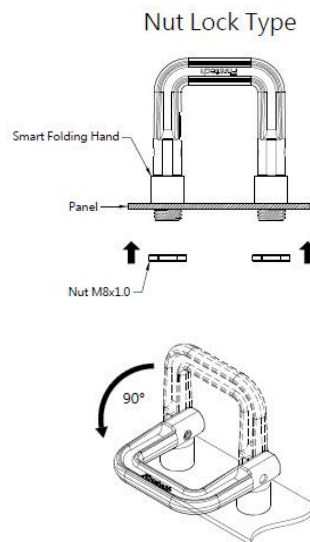
Material and Finish

Handle :
 Plastic.
Rivet :
 300 series stainless steel, natural finish.
Pin :
 Carbon steel, zinc finish.
Spring :
 300 series stainless steel, natural finish.
Ferrule :
 Carbon steel, zinc finish.
Nut :
 Carbon steel, zinc finish.

Panel Preparation



Installation Style



Dimensions(mm)

Type	OUTER PANEL DIMENSIONS		(A)	(B)		(C)
	A MIN	A MAX		A MIN	A MAX	
Thread-in	0.8	-	42	30	80	14.7

Handle Color Options

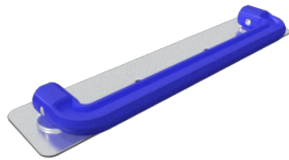


SMART FOLDING HANDLE

- Modular design, easily secured with screws for reliable installation.
- 90° folding positioning, prevent shaking and noise.
- Folded when stored, saves space.
- High-temperature resistant suitable for installation on water cooling plates.
- Color, pitch, length, size, and other specifications can be customized.

Smart Folding Handle Module-Thread in

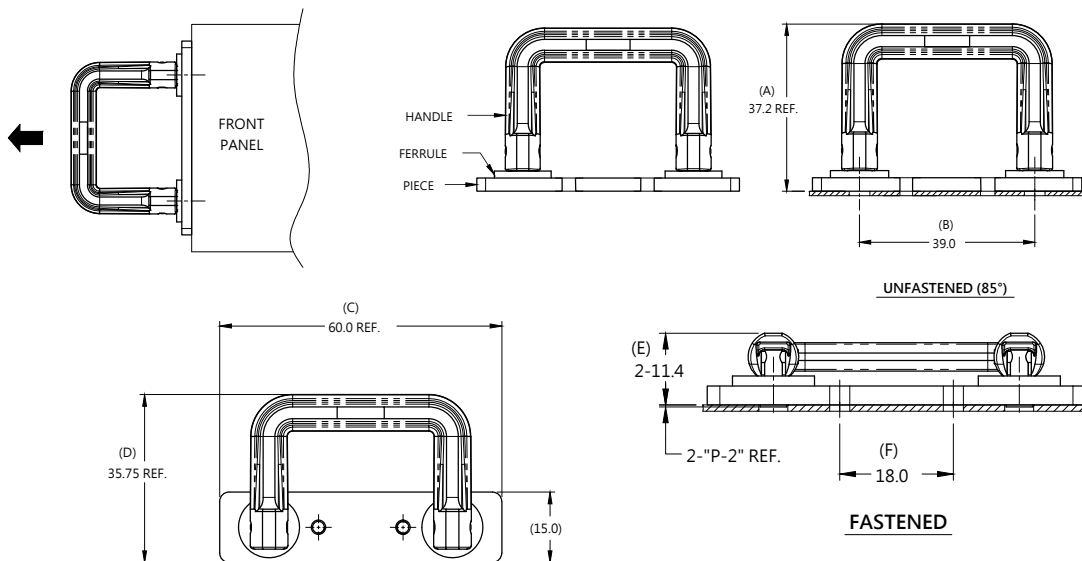
Patented.



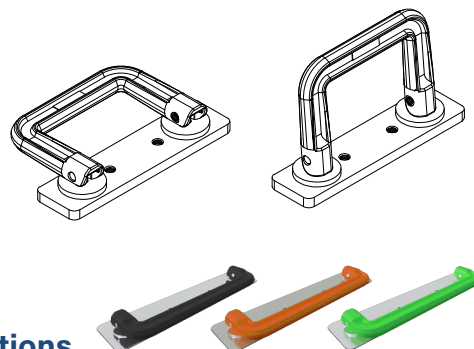
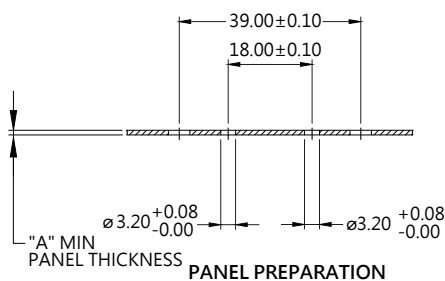
Material and Finish

HANDLE : PLASTIC
RIVET : STAINLESS STEEL
PIN : CARBON STEEL
SPRING : STAINLESS STEEL
FERRULE : CARBON STEEL
PIECE : CARBON STEEL

Installation Style



Panel Preparation



Color Options

01 02 03 04 05 06 07 08 09 00

Dimensions(mm)

LENGTH "T"	HANDLE PROJECTION		PANEL THICKNESS		DIMENSIONS	
	" P-1 "	"P-2"	"A" MIN	"A" MAX	" L "	" B "
		0.3	1.0	~		



SMART FOLDING HANDLE

- Unique spring-loaded mechanism designed is to fixed and to steady its rebound position, to solve the disturbing noise emitted by vibration.
- 0 to 90 degrees fold/pull to lock/unlock user-friendly tool.
- All the material, color, size & pitch spec can be spec made.

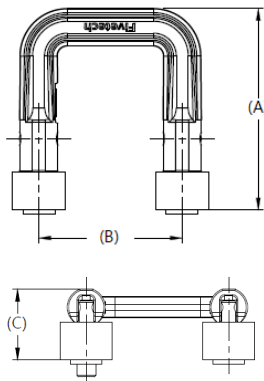
SMART FOLDING HANDLE - PIN LOCK_FLARE IN Patented.



Material and Finish

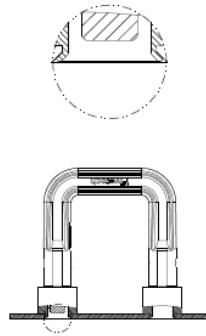
Handle :
Plastic.
Rivet :
300 series stainless steel, natural finish.
Pin :
Carbon steel, zinc finish.
Spring :
300 series stainless steel, natural finish.
Ferrule :
6000 series aluminum, natural finish.

Panel Preparation

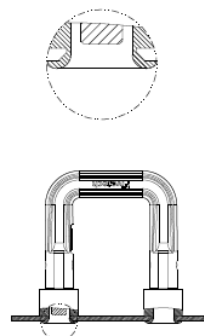


Installation Style

Flare-in Type A

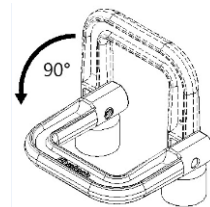


Flare-in Type B

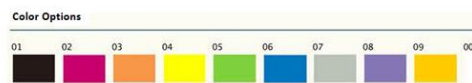


Dimensions

Type	OUTER PANEL DIMENSIONS		(A)	(B)		(C)
	A MIN	A MAX		A MIN	A MAX	
Flare-in A	0.8	-	42	30	80	14.7
Flare-in B	0.8	-	42	30	80	14.7



Handle Color Options



SMART FOLDING HANDLE

SMT fully automated manufacturing process can increase production stability and production efficiency.

The unique spring-loaded mechanism designed is to fixed and steady its rebound position, to solve the disturbing noise emitted by vibration.

90-degree positioning, lightweight, user-friendly.

Plastic can be customized for identity color, and the degree of pull can be customized according to the needs.

SMART FOLDING HANDLE – SMT TYPE Patented.



Material and Finish

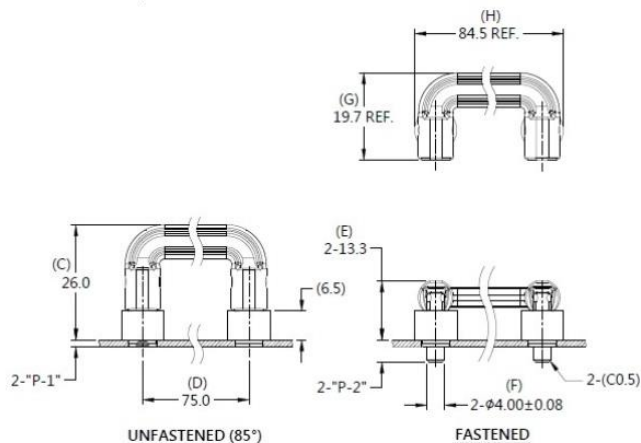
Handle:
Plastic

Pin / Rivet:
300 Series Stainless Steel, Natural Finish.

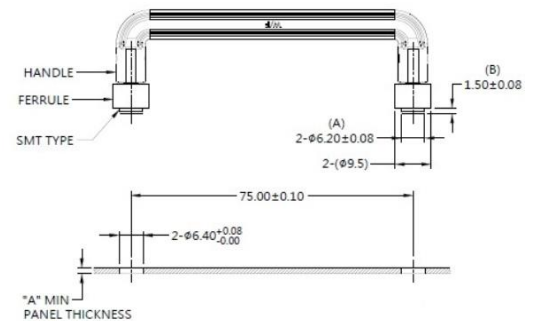
Spring :
300 Series Stainless Steel, Natural Finish.

Ferrule :
Carbon Steel, Tin.

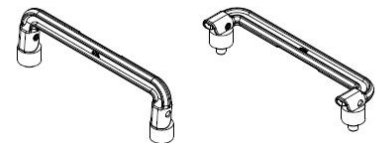
Panel preparation



Installation Style



Knob Color Options



Dimensions (mm)

PN	HANDLE PROJECTION		PANEL THICKNESS	
	P1	P2	"A"MIN	"A"MAX
62-57P-075-0-03-5	1.5	5.0	1.6	~

SMART FOLDING HANDLE

- A good helper to draw various modules and PCBs
- The T-shaped structure design is ergonomic and only needs two fingers to lift
- The foldable fixed storage function helps save mechanical space
- It can combine with the function of Latch Lock for easy positioning
- Customized available

Low Profile Folding Handle Patented.



Material and Finish

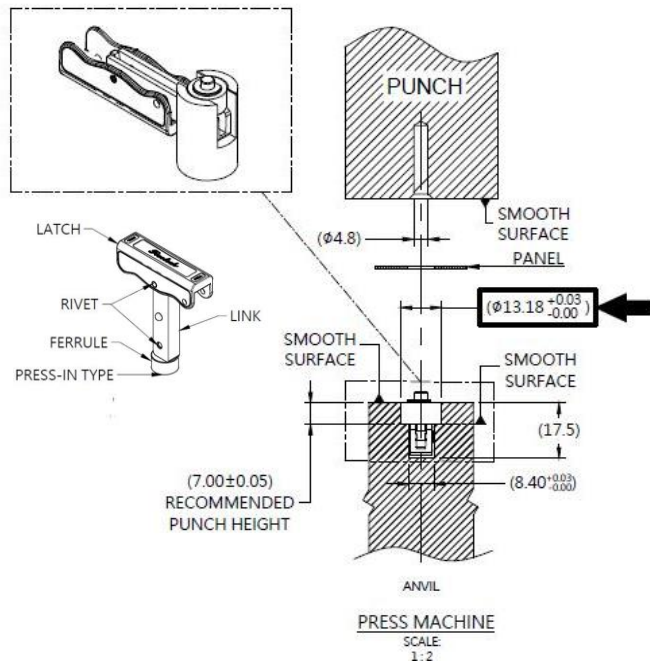
Latch/ Link :
Plastic

Pin :
Carbon Steel, Zinc Finish

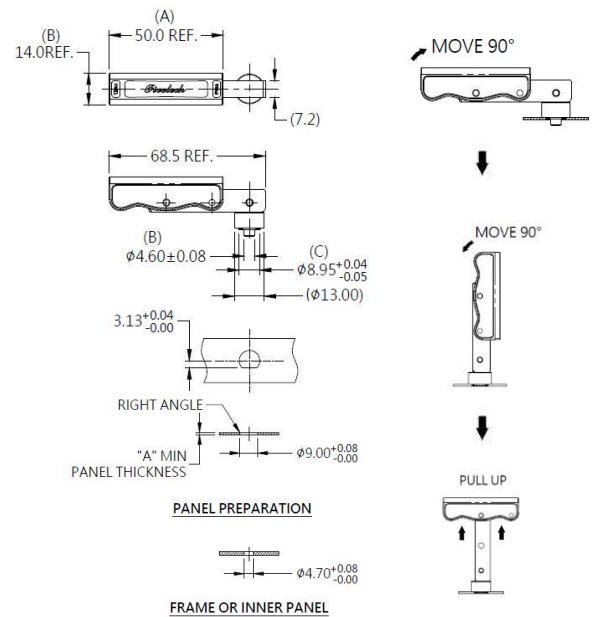
Ferrule :
Carbon Steel, Zinc Finish

Rivet/ Spring :
300 Series Stainless Steel, Natural Finish

Installation



Panel Preparation



Dimensions (mm)

LENGTH "T"	SCREW PROJECTION		PANEL THICKNESS		DIMENSINOS	
	"H-1"	"H-2"	"A" MIN	"A" MAX	" L "	" B "
26.1	22.5	62.0	1.0	~		