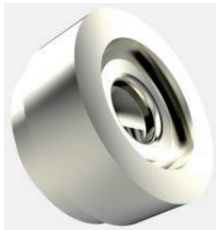


Slide Roller

- Slide Roller type rail to ease the thrust/tensile force
- self-clinching installation type-press in/ flare in
- roller type rail, flexible rail design in limited space
- can easily adjust rail positioning, length, how much weight-lifting
- roller type lighten weight to compare with metal track rail

Slide Roller

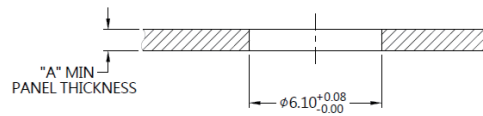
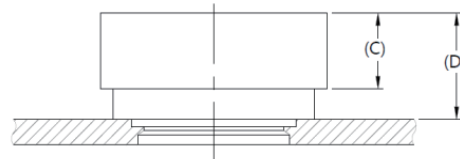
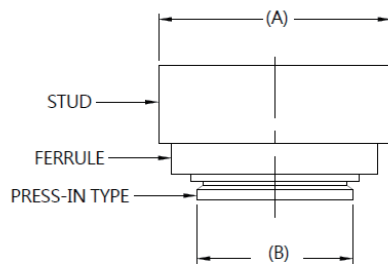
Patented.



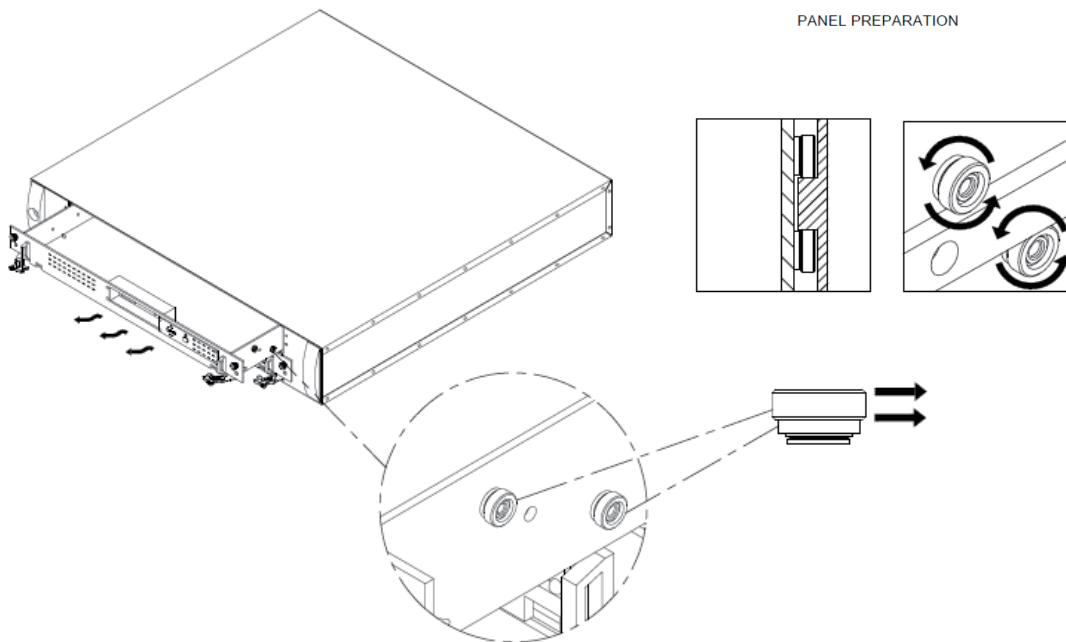
Material and Finish

Stud :
Carbon Steel, Nickel Finish.
Ferrule :
300 Series Stainless Steel, Natural Finish.

Panel Preparation



Installation Style



Dimensions (mm)

PANEL THICKNESS		(A)	(B)	(C)	(D)
MIN	MAX				
1.0	~	9	6.05	3.0	4.2

Copyright © Since 2007-2016 Fivetech Technology Inc. All Right Reserved.