

## Captive Lock

- Intuitive operation with a simple one-hand pull.
- Effort-saving structural design allows for quick positioning.
- Locking/unlocking in one second enhances assembly and maintenance efficiency.
- Lateral operation positioning suitable for confined spaces.
- Customization options available.

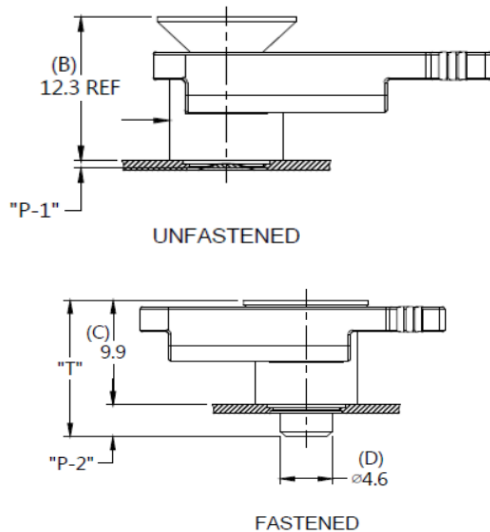
## Slide Lock Patented.



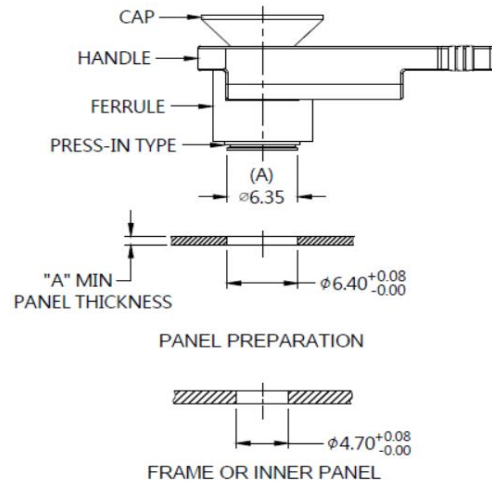
### Material and Finish

**Handle :**  
Plastic.  
**Cap :**  
Carbon Steel, Nickel Finish.  
**Pin :**  
Carbon Steel, Nickel Finish.  
**Spring :**  
300 Series Stainless Steel, Natural Finish.  
**Ferrule :**  
Carbon Steel, Nickel Finish.

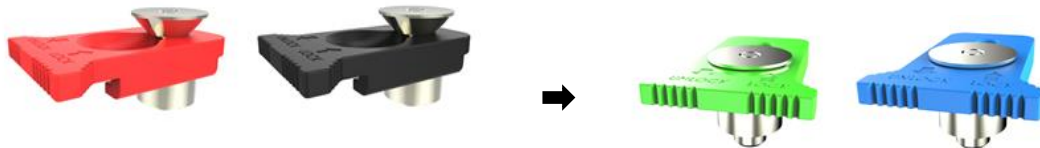
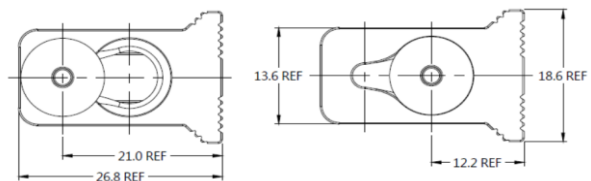
### ■ Projection



### ■ Installation Style



### ■ Knob Color Options



### ■ Installation Type Options



### ■ Dimensions(mm)

PANEL THICKNESS		T	P-1	P-2	H-1 UNFASTENED	H-2 FASTENED
A MIN	A MAX					
0.8	-	12.9	0.6	3.0	12.3REF	9.9

## SLIDE LOCK

- The horn shape provides an outstanding operation experience
- Designs with spring and will automatically rebound to the lock position when released
- The effort-saving structure makes you one-second unlock easily
- Side direction operation, suitable for special space restrictions

## Horn Looking Slide Lock Patented.



### Material and Finish

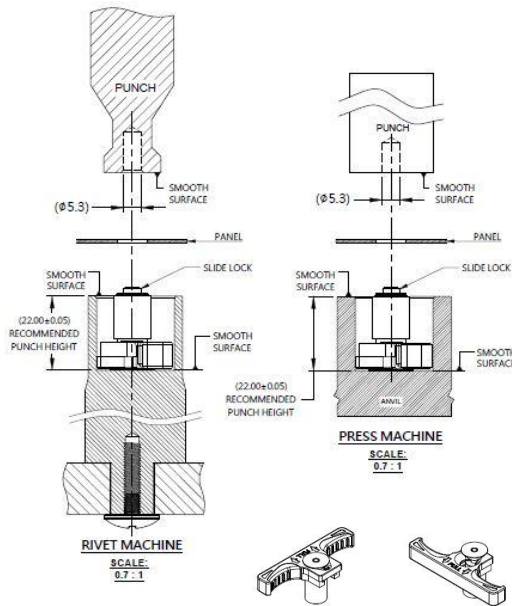
**Handle :**  
Plastic

**Cap :**  
Carbon Steel, Nickel Finish

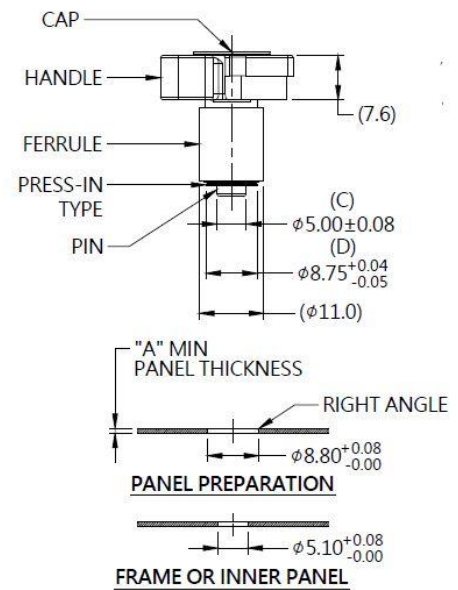
**Pin :**  
300 Series Stainless Steel, Natural Finish

**Spring/Ferrule :**  
300 Series Stainless Steel, Natural Finish

### Installation



### Panel Preparation



### Dimensions (mm)

LENGTH "T"	PROJECTION		PANEL THICKNESS		DIMENSINOS	
	"H-1"	"H-2"	"A" MIN	"A" MAX	" L "	" B "
24.7	22.0	24.7	0.8	~		