

EJECTOR

- Leverage configuration design is easy to lift and eject the front face plate
- One form single piece structure, cost down/cost effective design
- Simple spring force design can rebound and lock easily
- Ejector specification could be customized
- Plastic handle CI is available

ROTATE EJECTOR Patented.

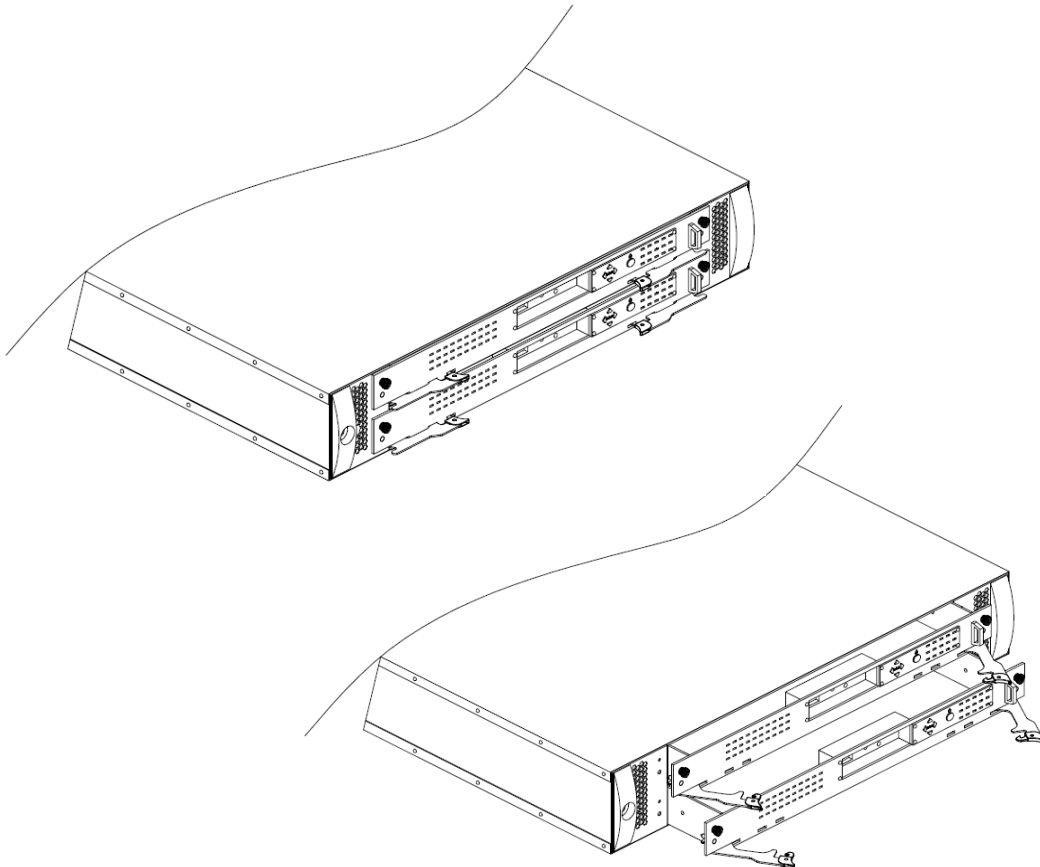
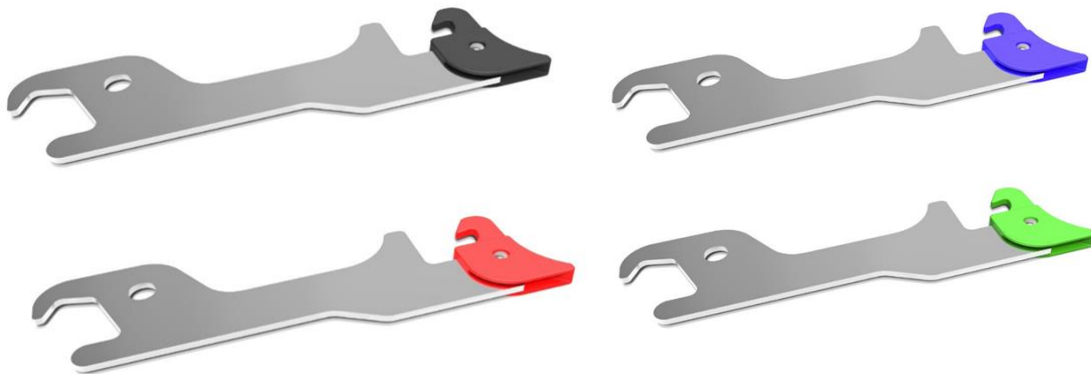
Material and Finish

HANDLE: PLASTIC

LEVER: 300 SERIES STAINLESS STEEL, NATURAL FINISH

SPRING: 300 SERIES STAINLESS STEEL, NATURAL FINISH

RIVET: 300 SERIES STAINLESS SETTL, NATURAL FINISH



ROTATE EJECTOR

- Rotate Ejector offers auto-locking design and leveraging solutions for server tray
- Distinctive lever design contributes to minimum effort ejection
- With optional captive screw lock to secure and attach to server faceplate
- Captive Screw, Quarter Turn, Plunger, Latch Plunger types are available

ROTATE EJECTOR- Captive Screw Patented.



Material and Finish

LEVER:
300 SERIES STAINLESS STEEL , NATURAL FINISH.

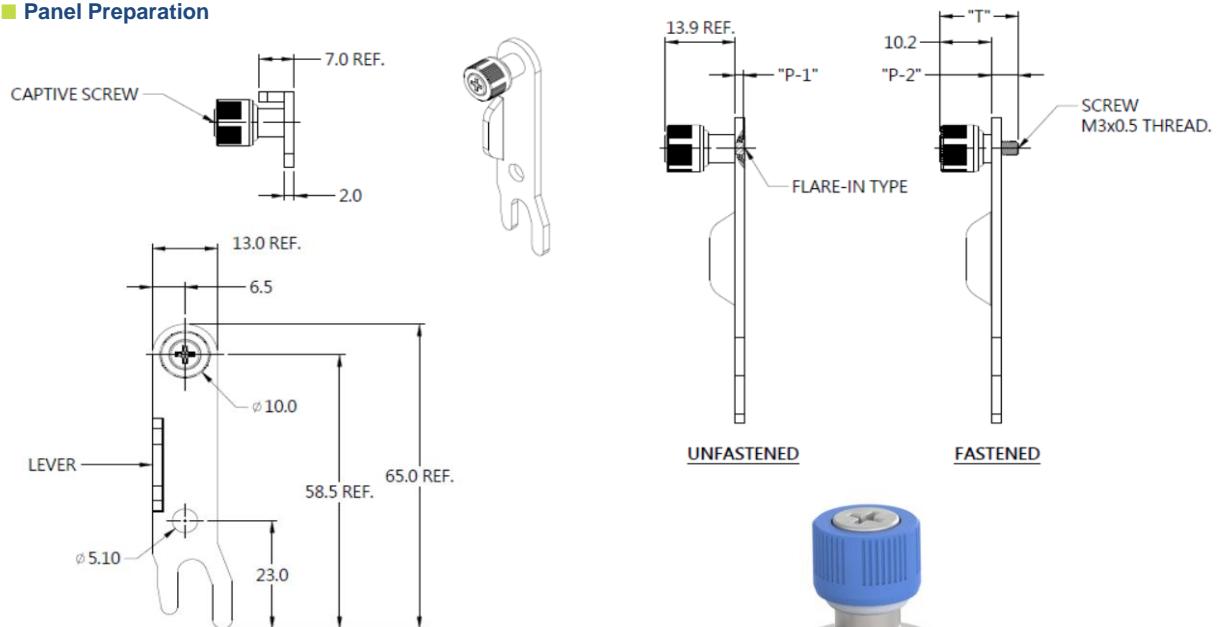
KNOB:
6000 SERIES ALUMINUM , PLASTIC : PANTONE 659C (BLUE).

SCREW:
400 SERIES STAINLESS STEEL , NATURAL FINISH.

SPRING:
300 SERIES STAINLESS STEEL , NATURAL FINISH.

FERRULE:
6000 SERIES ALUMINUM , NATURAL FINISH.

Panel Preparation



Knob Color Options



Dimensions (mm)

SCREW LENGTH "T"	SCREW PROJECTION		PANEL THICKNESS		DIMENSINOS	
	"P-1"	"P-2"	PANEL 1	PANEL 2	" L "	" B "
15.6	1.7	5.4	2.0	1.4	~	~

ROTATE EJECTOR

- Rotate Ejector offers auto-locking design and leveraging solutions for server tray
- Distinctive lever design contributes to minimum effort ejection
- With optional captive screw lock to secure and attach to server faceplate
- Captive Screw, Quarter Turn, Plunger, Latch Plunger types are available

ROTATE EJECTOR- Mini Latch Plunger

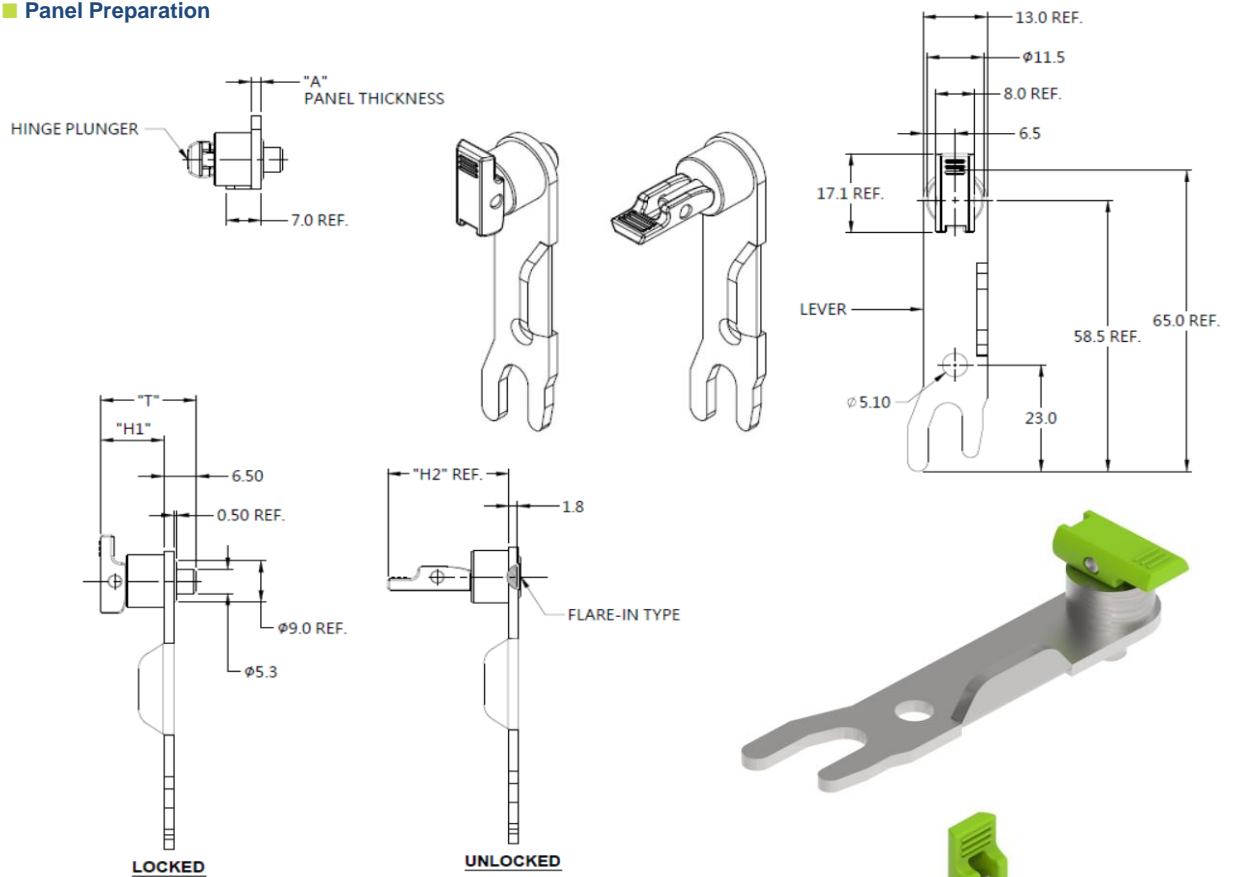
Patented.



Material and Finish

LEVER:
300 SERIES STAINLESS STEEL , NATURAL FINISH.
WRENCH:
PLASTIC; PANTONE 376C (GREEN).
RIVET:
300 SERIES STAINLESS STEEL , NATURAL FINISH.
PIN:
CARBON STEEL , ZINC FINISH.
SPRING:
300 SERIES STAINLESS STEEL , NATURAL FINISH.
FERRULE:
6000 SERIES ALUMINUM , NATURAL FINISH.

■ Panel Preparation



■ Knob Color Options



■ Dimensions (mm)

SCREW LENGTH "T"	SCREW PROJECTION		PANEL THICKNESS		DIMENSINOS	
	"H-1"	"H-2"	"A"	"A" MAX	" L "	" B "
19.2	12.7	24.6	2.0		~	~

ROTATE EJECTOR

- Rotate Ejector offers auto-locking design and leveraging solutions for server tray
- Distinctive lever design contributes to minimum effort ejection
- With optional quarter turn lock to secure and attach to server faceplate
- Captive Screw, Quarter Turn, Plunger, Latch Plunger types are available

ROTATE EJECTOR- Bat Quarter Turn

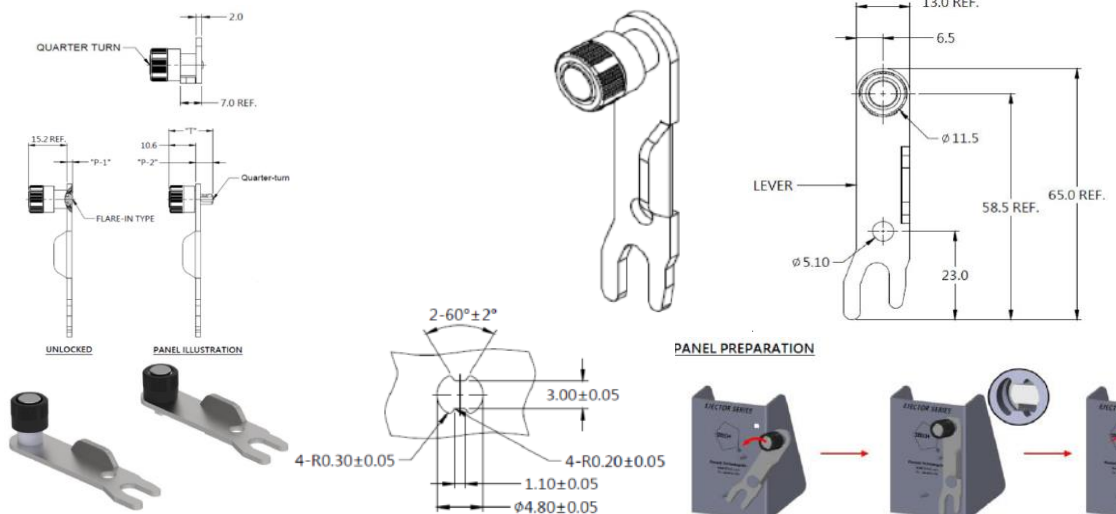
Patented.



Material and Finish

LEVER:
300 SERIES STAINLESS STEEL , NATURAL FINISH.
KNOB:
PLASTIC, PANTONE :BLACK.
QUARTER TURN :
CARBON STEEL, ZINC FINISH.
SPRING:
300 SERIES STAINLESS STEEL, NATURAL FINISH.
FERRULE:
6000 SERIES ALUMINUM , ZINC FINISH.

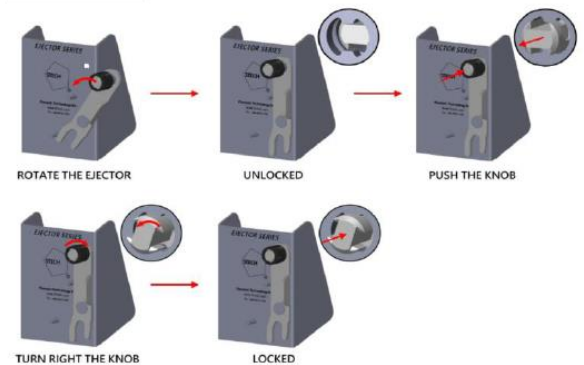
Panel Preparation



Knob Color Options



PANEL PREPARATION



Dimensions (mm)

SCREW LENGTH "T"	SCREW PROJECTION		PANEL THICKNESS		DIMENSINOS	
	"P-1"	"P-2"	PANEL 1	PANEL 2	" L "	" B "
17.5	2.3	6.9	2.0	1.4	~	~

EJECTOR

Lever structure, easy to operate.

Energy saving, time efficiency.

The spec of Ejector could be customized.

The plastic latch lock part is available for color management.

EJECTOR (LATCH LOCK TYPE) Patented.



Material and Finish

Lever :

300 Series Stainless Steel, Natural Finish.

Wrench :

Plastic

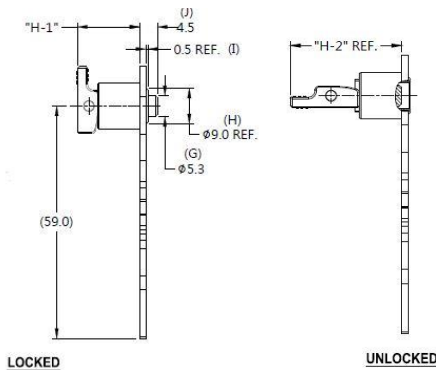
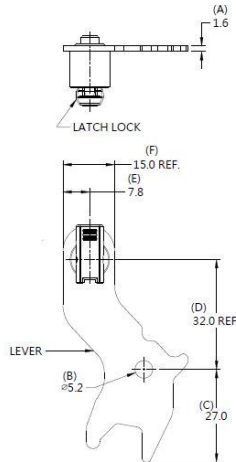
Rivet / Pin / Spring :

300 Series Stainless Steel, Natural Finish.

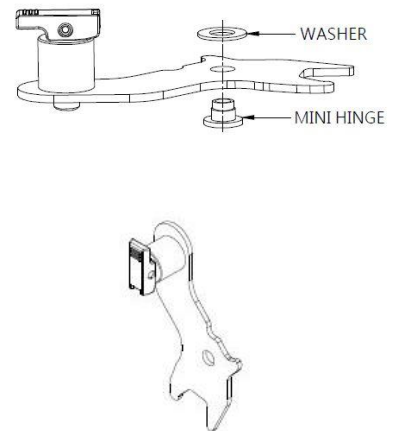
Ferrule :

6000 Series Aluminum, Natural Finish.

Knob High and Screw Projection



Installation Style



Knob Color Options



Dimensions (mm)

P/N	PROJECTION		NOTE
502-05714-01-1-L/R	H1	H2	All parts can be customized
	15.7	27.6	

ROTATE EJECTOR

- Rotate Ejector offers auto-locking design and leveraging solutions for server tray
- Distinctive lever design contributes to minimum effort ejection
- With optional captive screw lock to secure and attach to server faceplate
- Captive Screw, Quarter Turn, Plunger, Latch Plunger types are available

ROTATE EJECTOR- Slide Plunger

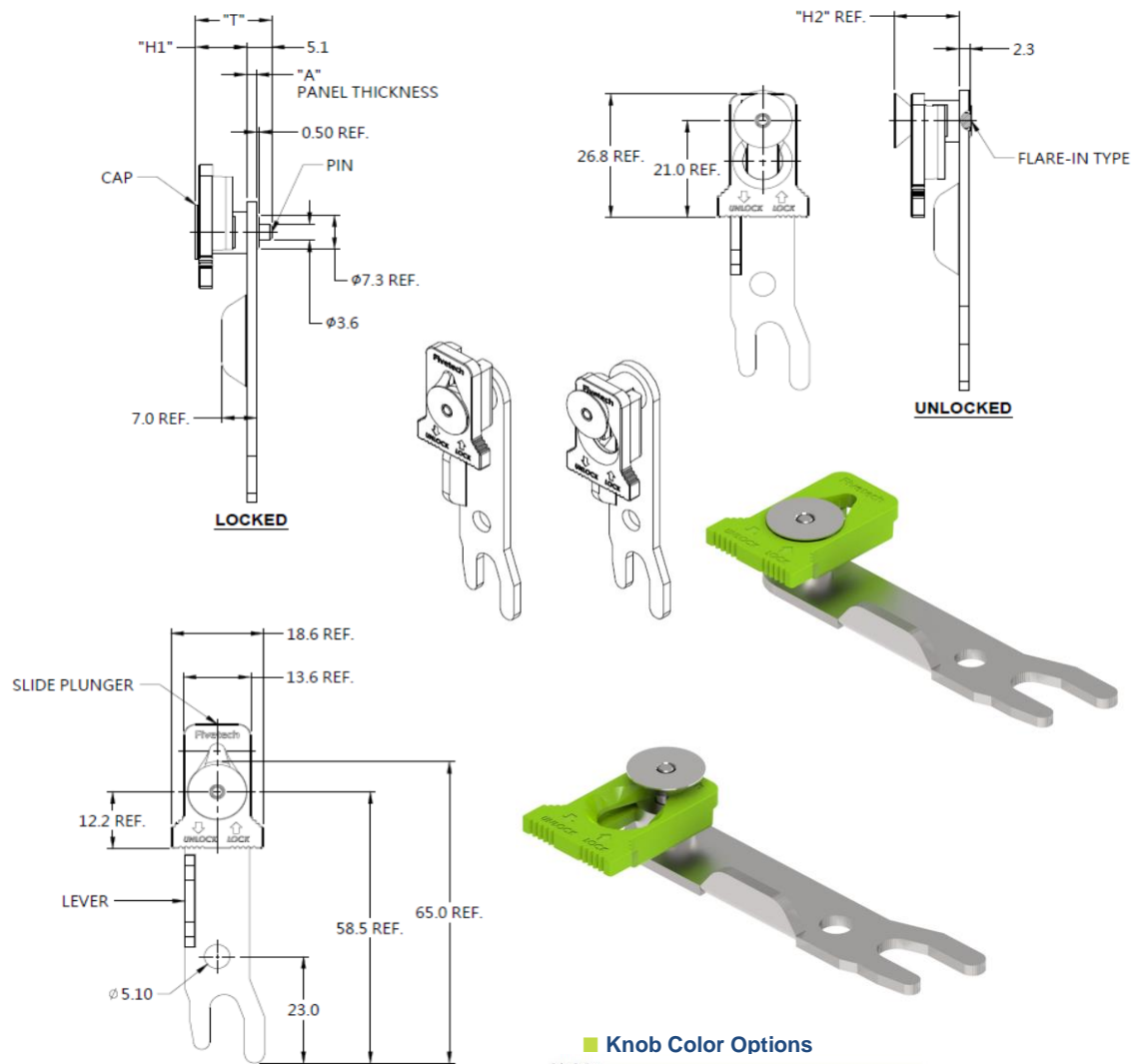
Patented.



Material and Finish

LEVER:
300 SERIES STAINLESS STEEL , NATURAL FINISH.
HANDLE:
PLASTIC; PANTONE 376C (GREEN).
CAP:
CARBON STEEL, NICKEL FINISH
PIN:
CARBON STEEL , NICKEL FINISH.
SPRING:
300 SERIES STAINLESS STEEL , NATURAL FINISH.
FERRULE:
6000 SERIES ALUMINUM , NATURAL FINISH.

■ Panel Preparation



■ Knob Color Options



■ Dimensions (mm)

SCREW LENGTH "T"	SCREW PROJECTION		PANEL THICKNESS		DIMENSINOS	
	"H-1"	"H-2"	"A"	"A" MAX	" L "	" B "
19.2	12.7	24.6	2.0		~	~

EJECTOR

Lever structure, easy to operate, effort saving.

Lever structure easily boost to lift and eject heavy chassis.

Size and length can be customized.

Slide Lock is an optional locking function.

Ejector (Slide Lock Type) Patented.



Material and Finish

Lever :

300 Series Stainless Steel, Natural Finish.

Cap :

Carbon Steel, Nickel Finish.

Pin :

Carbon Steel, Nickel Finish.

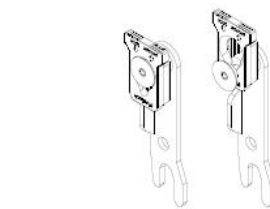
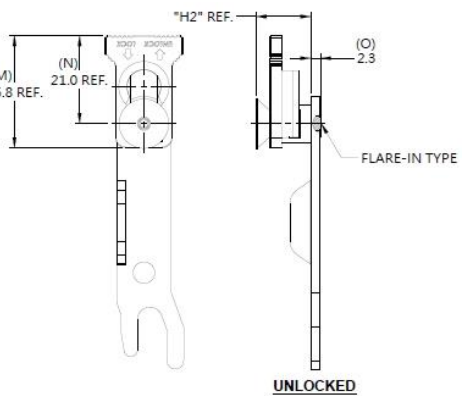
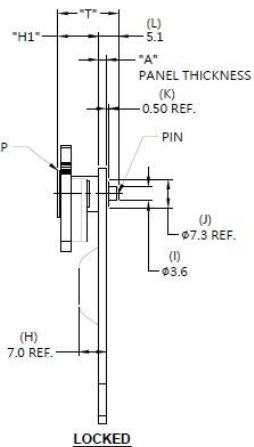
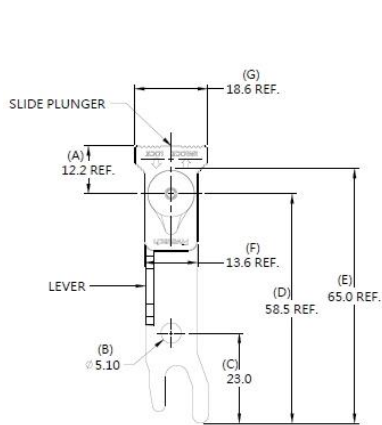
Spring :

300 Series Stainless Steel, Natural Finish.

Ferrule :

6000 Series Aluminum Steel, Natural Finish.

Dimensions (mm)



Color Options



Dimensions (mm)

P/N	SCREW LENGTH "T"	SCREW PROJECTION		PANEL THICKNESS		NOTE
		H1	H2	A	"A"MAX	
502-10718-01-5	19.2	12.7	24.6	2.0		All parts can be customized

Ejector Handle

- Lever structure, easy to operate, energy saving .
- lever structure easily boost to lift and eject heavy chassis.
- handle design size and length can be customized.
- Captive Screw is optional locking function.

Ejector Handle - Captive Screw Type Patented.

Material and Finish

Lever :
300 Series Stainless Steel, Natural Finish.

Knob :
6000 Series Aluminum Steel, Plastic.

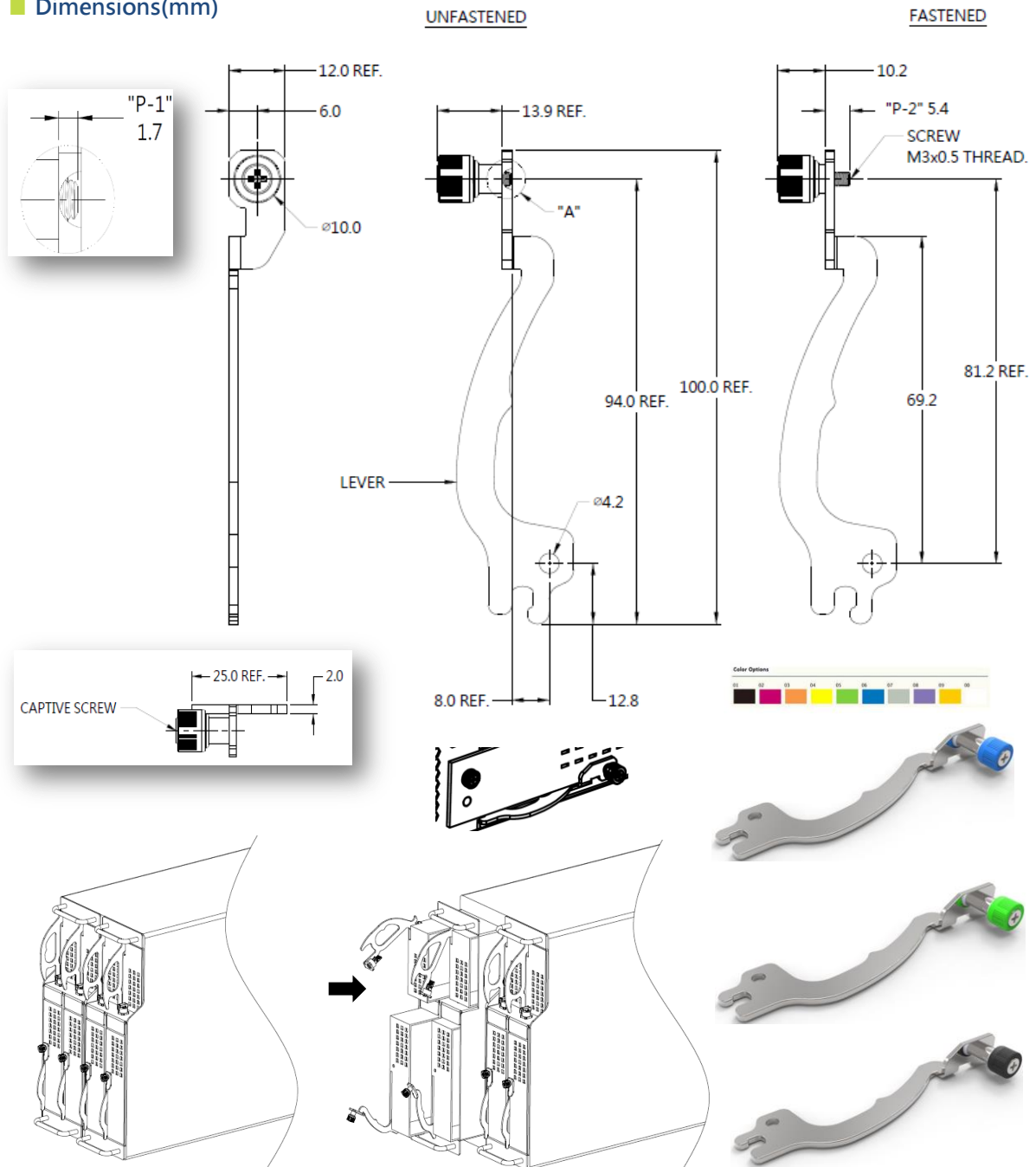
Screw :
400 Series Stainless Steel, Natural Finish.

Spring :
300 Series Stainless Steel, Natural Finish.

Ferrule :
6000 Series Aluminum Steel, Plastic.



■ Dimensions(mm)



Ejector Handle

- Lever structure, easy to operate, energy saving .
- lever structure easily boost to lift and eject heavy chassis.
- handle design size and length can be customized.
- Latch Plunger is optional locking function.

Ejector Handle - Latch Plunger Type Patented.



Material and Finish

Lever :
300 Series Stainless Steel, Natural Finish.

Wrench :
Plastic.

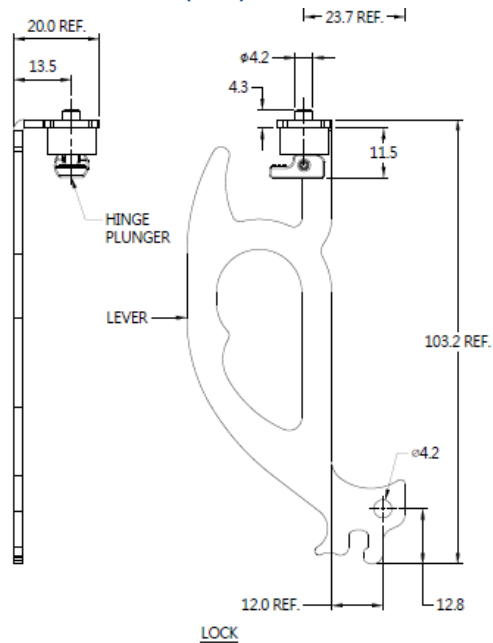
River :
300 Series Stainless Steel, Natural Finish.

Pin :
Carbon Steel, Zinc Finish.

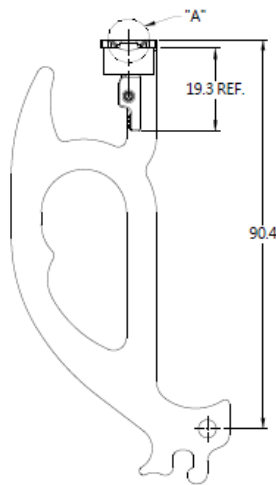
Spring :
300 Series Stainless Steel, Natural Finish.

Ferrule :
6000 Series Aluminum Steel, Plastic.

■ Dimensions(mm)

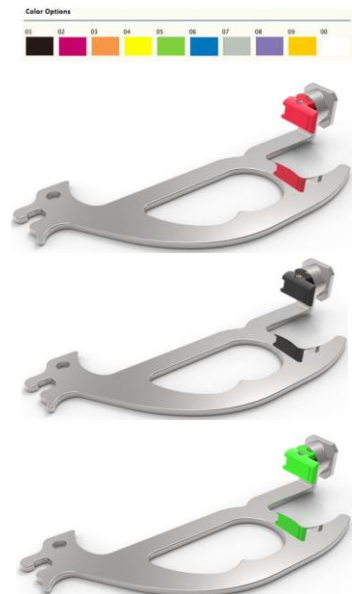


LOCK

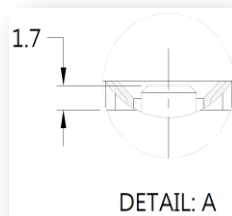


UNLOCK

■ Knob Color Options



■ Installation



DETAIL: A

