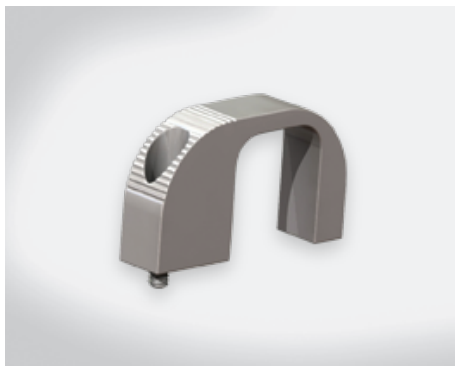


- Toolless or security design, screw with spring-ejection
- Hand-operation or with tool-only removal
- Handle design combines comfort with anti-slip
- One single module for limited space application, no additional hardware in the frame
- The spec of handle and screw could be customized

## 6B 1U SERIES



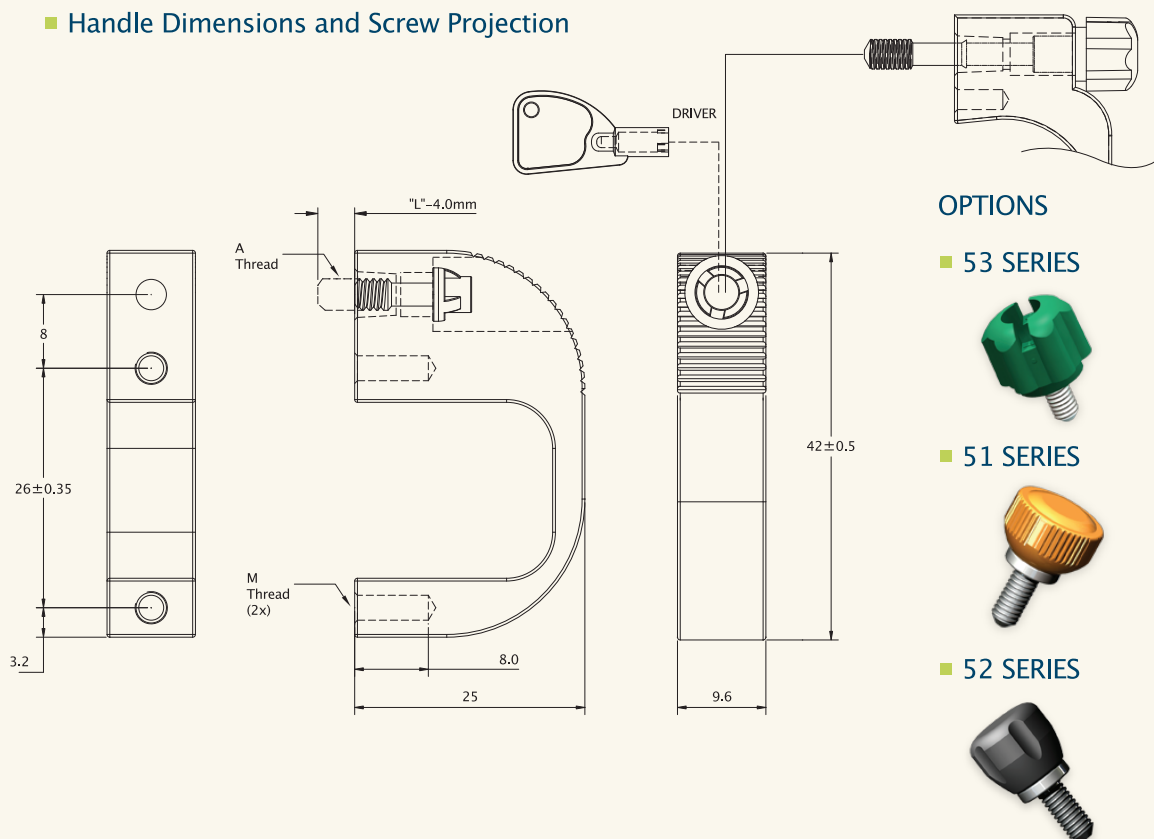
### Material and Finish

**Handle:**  
6000 series aluminum, anodize clear or black.

**Screw:**  
Hardened carbon steel, nickel.

**Spring:**  
300 series stainless steel.

### Handle Dimensions and Screw Projection



### OPTIONS

#### ■ 53 SERIES



#### ■ 51 SERIES



#### ■ 52 SERIES



### Security Series

| RECESS<br>STYLE | A<br>THREAD | Color | Part Number    |                |                |                |
|-----------------|-------------|-------|----------------|----------------|----------------|----------------|
|                 |             |       | M THREAD       |                |                |                |
|                 |             |       | M3             | 6-32           | M4             | 8-32           |
|                 | 6-32        | Black | 6B-04210-236-4 | 6B-04240-236-4 | 6B-04250-236-4 | 6B-04260-236-4 |
|                 |             | Clear | 6B-04210-336-4 | 6B-04240-336-4 | 6B-04250-336-4 | 6B-04260-336-4 |
|                 | M4          | Black | 6B-04210-203-5 | 6B-04240-203-5 | 6B-04250-203-5 | 6B-04260-203-5 |
|                 |             | Clear | 6B-04210-303-5 | 6B-04240-303-5 | 6B-04250-303-5 | 6B-04260-303-5 |
|                 | 8-32        | Black | 6B-04210-207-6 | 6B-04240-207-6 | 6B-04250-207-6 | 6B-04260-207-6 |
|                 |             | Clear | 6B-04210-307-6 | 6B-04240-307-6 | 6B-04250-307-6 | 6B-04260-307-6 |

- Toolless or security design, screw with spring-ejection
- Hand-operation or with tool-only removal
- Handle design combines comfort with anti-slip
- One single module for limited space application, no additional hardware in the frame
- The spec of handle and screw could be customized

## 6B 2U SERIES



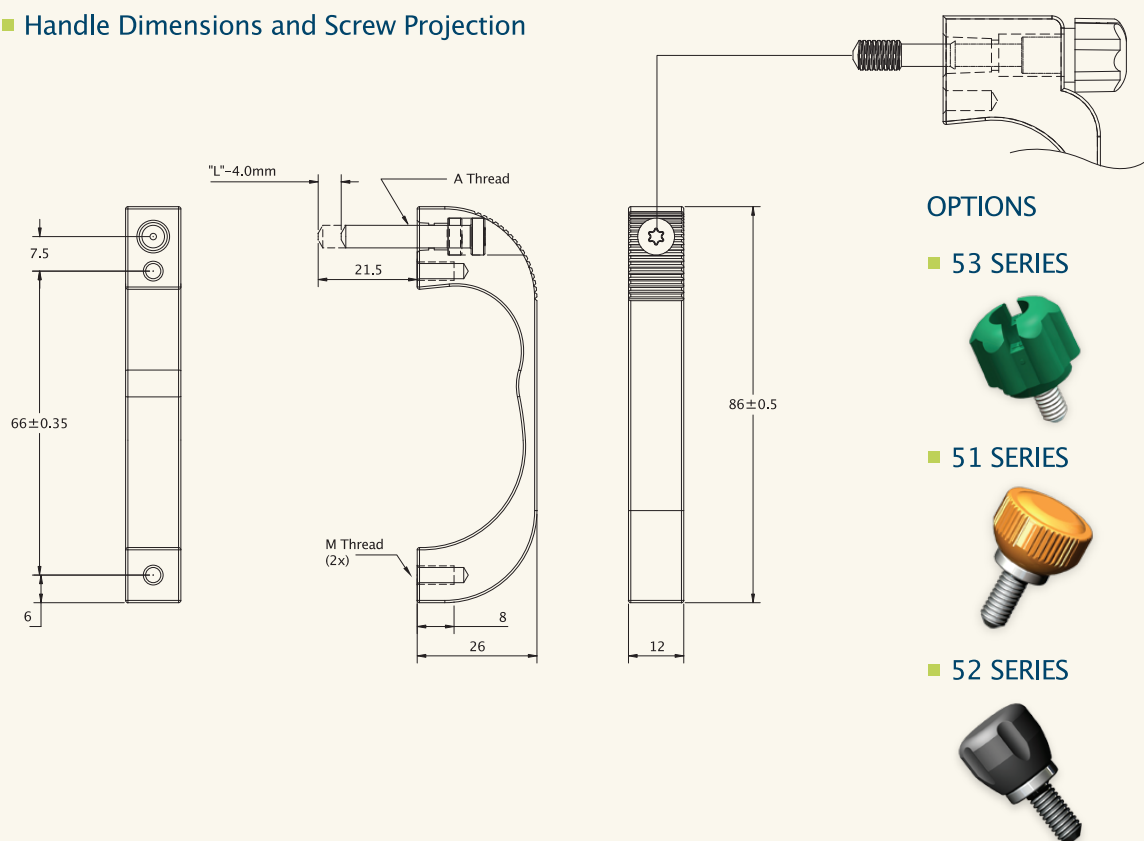
### Material and Finish

**Handle:**  
6000 series aluminum, anodize clear or black.

**Screw:**  
Hardened carbon steel, nickel.

**Spring:**  
300 series stainless steel.

### Handle Dimensions and Screw Projection



### Security Series

| RECESS STYLE | A THREAD     | Color | Part Number    |                |                |                |
|--------------|--------------|-------|----------------|----------------|----------------|----------------|
|              |              |       | M THREAD       |                |                |                |
|              |              |       | M4             | 8-32           | M5             | 10-32          |
|              | PHILLIPS # 2 | M4    | 6B-08650-202-5 | 6B-08660-202-5 | 6B-08670-202-5 | 6B-08680-202-5 |
|              |              |       | 6B-08650-302-5 | 6B-08660-302-5 | 6B-08670-302-5 | 6B-08680-302-5 |
|              | HEX 3.0mm    | 8-32  | 6B-08650-206-6 | 6B-08660-206-6 | 6B-08670-206-6 | 6B-08680-206-6 |
|              |              |       | 6B-08650-306-6 | 6B-08660-306-6 | 6B-08670-306-6 | 6B-08680-306-6 |
|              | 6L T20       | M5    | 6B-08650-203-7 | 6B-08660-203-7 | 6B-08670-203-7 | 6B-08680-203-7 |
|              |              |       | 6B-08650-303-7 | 6B-08660-303-7 | 6B-08670-303-7 | 6B-08680-303-7 |
|              | 6L TT20      | 10-32 | 6B-08650-207-8 | 6B-08660-207-8 | 6B-08670-207-8 | 6B-08680-207-8 |
|              |              |       | 6B-08650-307-8 | 6B-08660-307-8 | 6B-08670-307-8 | 6B-08680-307-8 |



- Simply hand operation
- Toolless or security design, captive screw with spring-ejection
- Handle & screw combine to one single module for limited space application, no additional hardware in the frame
- The spec of handle and captive screw could be customized

## 6B 3U SERIES

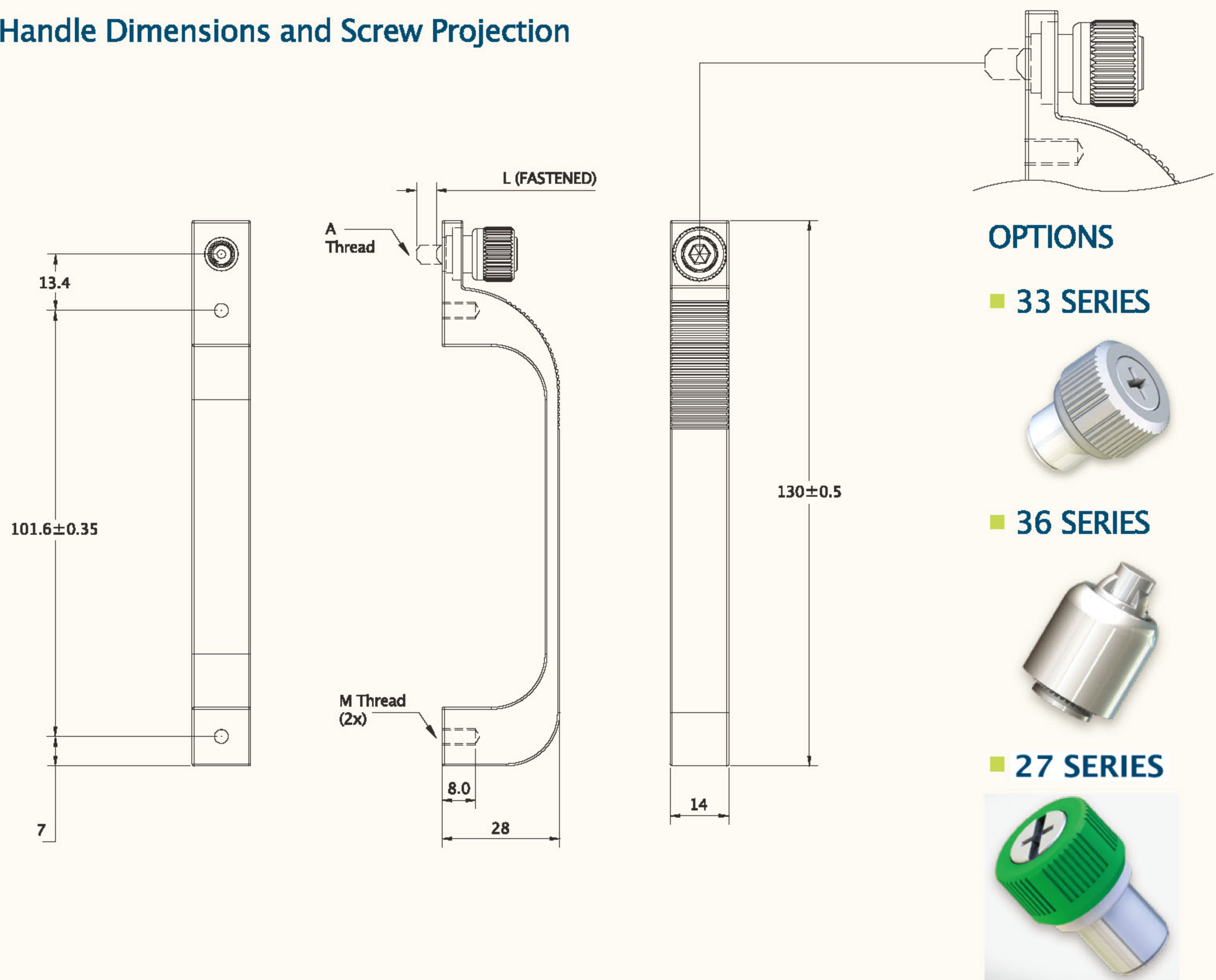


## Material and Finish


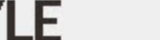
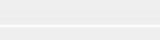
**Handle:**  
6000 series aluminum, anodize clear or black.

**Screw:**  
Choose a head from option type captive screw.

## ■ Handle Dimensions and Screw Projection



## ■ Security Series

| RECESS<br>STYLE   |                 | A<br>THREAD | Color | Part Number    |                |                |                |
|---|-----------------|-------------|-------|----------------|----------------|----------------|----------------|
|   |                 |             |       | M THREAD       |                |                |                |
|   |                 |             | M4    | 8-32           | M5             | 10-32          |                |
|  | PHILLIPS<br># 2 | M5          | Black | 6B-13050-202-7 | 6B-13060-202-7 | 6B-13070-202-7 | 6B-13080-202-7 |
|   |                 |             | Clear | 6B-13050-302-7 | 6B-13060-302-7 | 6B-13070-302-7 | 6B-13080-302-7 |
|  | HEX<br>3.0mm    |             | Black | 6B-13050-206-7 | 6B-13060-206-7 | 6B-13070-206-7 | 6B-13080-206-7 |
|   |                 |             | Clear | 6B-13050-306-7 | 6B-13060-306-7 | 6B-13070-306-7 | 6B-13080-306-7 |
|  | 6L<br>T25       | 10-32       | Black | 6B-13050-203-8 | 6B-13060-203-8 | 6B-13070-203-8 | 6B-13080-203-8 |
|   |                 |             | Clear | 6B-13050-303-8 | 6B-13060-303-8 | 6B-13070-303-8 | 6B-13080-303-8 |

- Toolless design: the toolless handle device can be fixed directly on to the door board
- Space saving: space for installing screws or bolts on the door board is not needed and can be saved
- The head shapes of manually operated devices and the specifications can be made according to customers' requirement
- Security devices and operation tools can be installed

## 6X 1U SERIES



### Material and Finish

#### Handle:

300 series stainless steel.

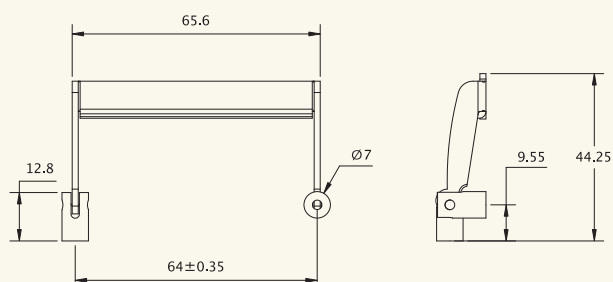
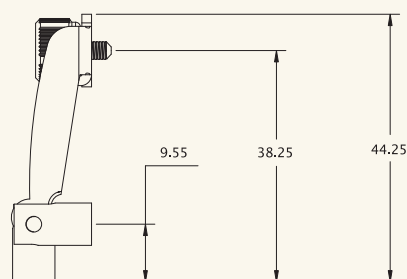
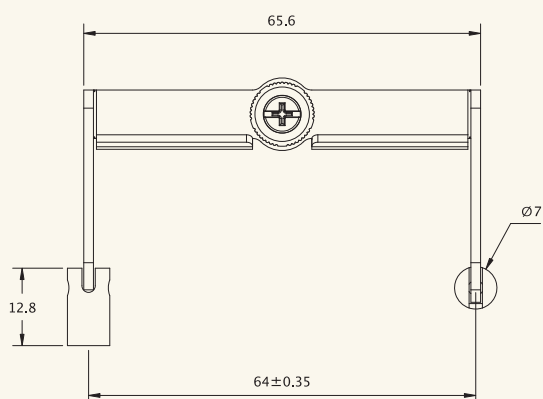
#### Hinged:

Low carbon steel, nickel.

#### Captive Screw:

Choose a head from 33 series captive screw.

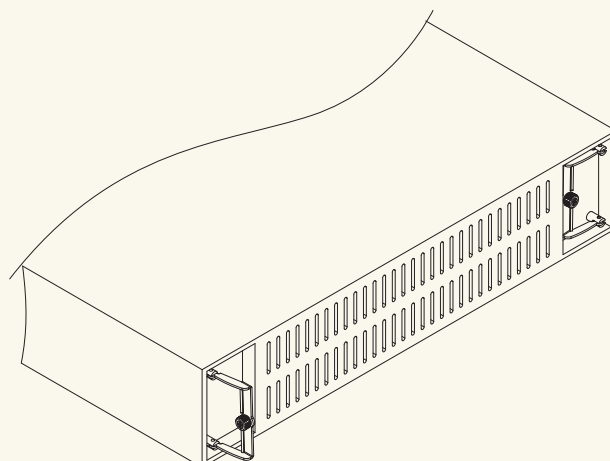
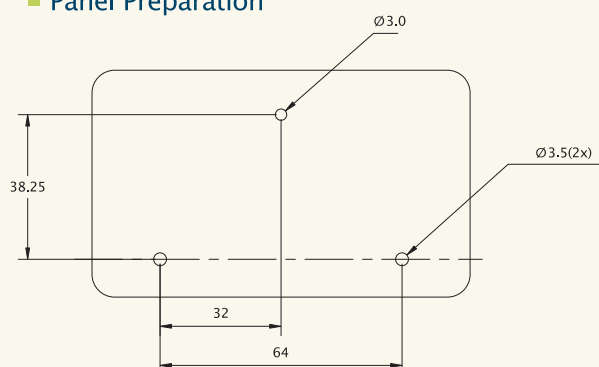
### Handle Dimensions and Screw Projection



### Toolless Series

| RECESS STYLE          | A THREAD | PART NUMBER    |
|-----------------------|----------|----------------|
|                       | M3       | 6X-06445-133-1 |
| Without Captive Screw | -        | 6X-51064-4     |

### Panel Preparation





- Design for strong pulling force, it's suitable for bigger case/box
- Additional retractive spring design to have a return function
- Also add the handling quality which can coming back by itself

## 71 SERIES



### Material and Finish

#### Base:

Spcc, zinc or electrocating black finish.

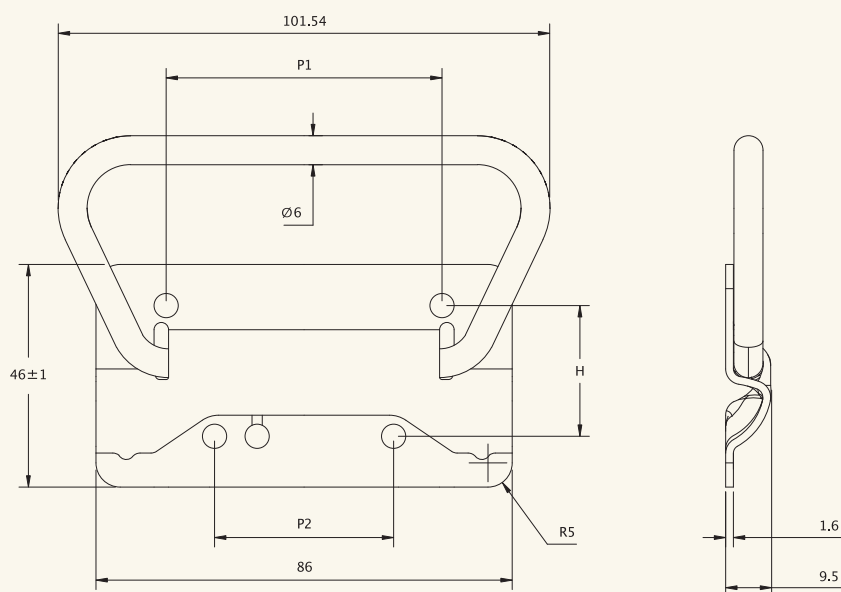
#### Handle:

Swrn, zinc or electrocating black finish.

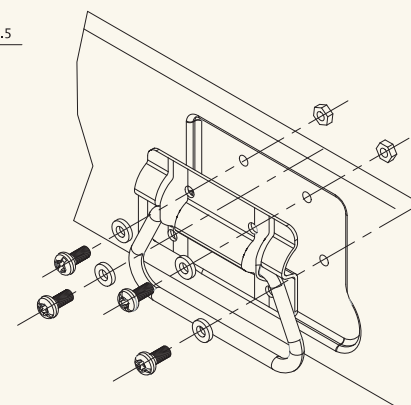
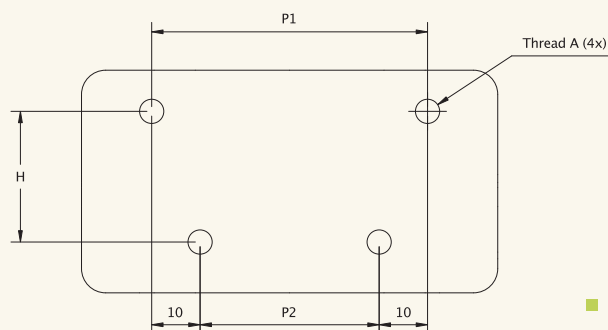
#### Spring:

300 Series stainless steel.

### ■ Handle Dimensions and Screw Projection



### ■ Panel Preparation



### ■ Dimensions

mm

| THREAD A | HOLE PITCH |    | HEIGHT | FINISH        | COLOR | PART NUMBER |
|----------|------------|----|--------|---------------|-------|-------------|
|          | P1         | P2 | H      |               |       |             |
| M5       | 57         | 37 | 27     | ZINC          | BLUE  | 71-14701    |
|          |            |    |        | ELECTROCATING | BLACK | 71-14702    |

## RETRACTIVE HANDLE

- Easy hand-operation function.
- Clean style with all-in-one design, save time and space.
- Multi-functional fastener solutions, well-suited for variety of markets.

## 6X SERIES Retractive Handle Patented.



### Material and Finish

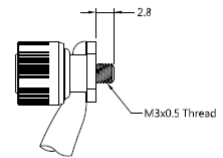
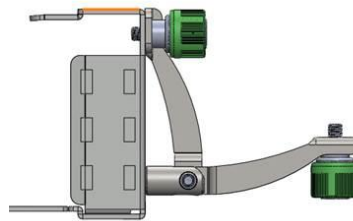
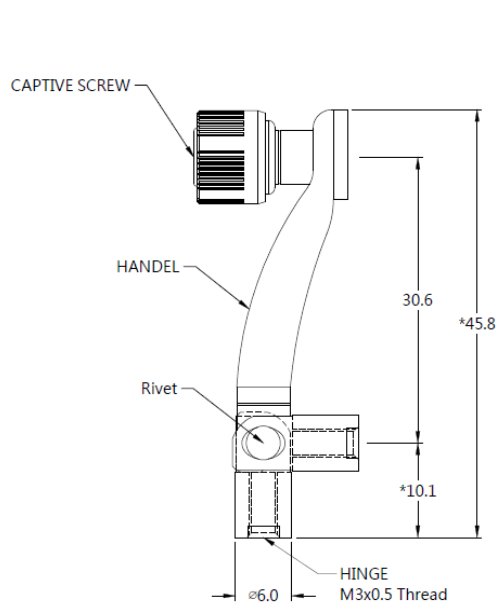
**Handle :**  
300 Series Stainless Steel, Natural Finish.

**Hinge :**  
Carbon Steel Nickel Finish.

**Rivet :**  
300 Series Stainless Steel, Natural Finish.  
Multi-functional Fastener solution.



### ■ Handle Dimensions and Screw Projection



### OPTIONS

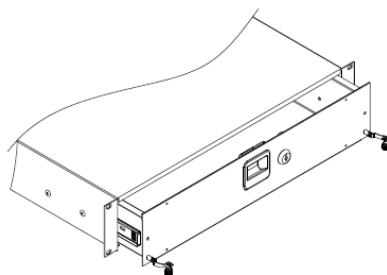
#### ■ 27 SERIES



#### ■ 33 SERIES



#### ■ 36 SERIES



### ■ Knob Color Options



## RETRACTIVE HANDLE

- Special retractive handle design for stronger spring force.
- Particular purposes for lifting very heavy bigger storage server chassis.
- Plastic handle reduces slip, heat, static electricity
- Plastic color management is available

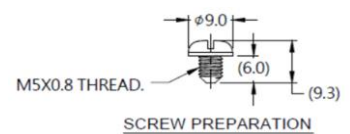
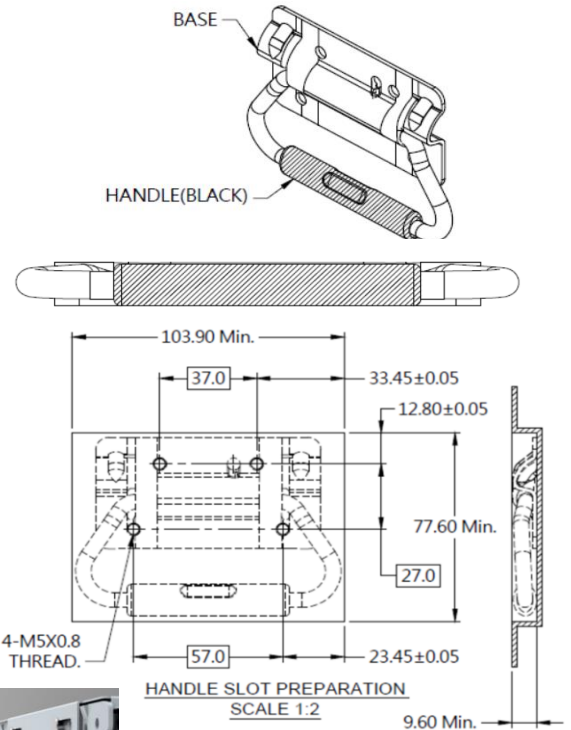
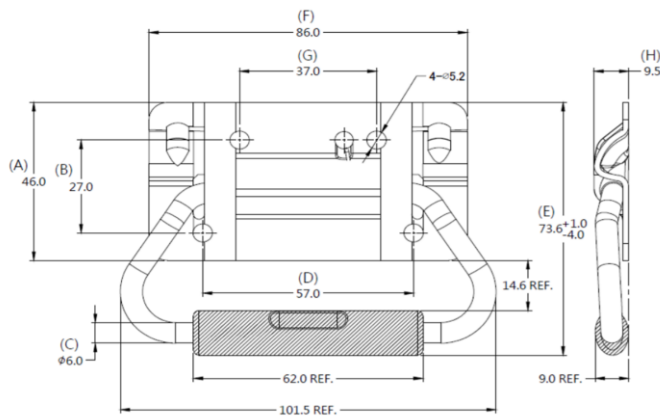
### 71 SERIES



#### Material and Finish

**BASE:**  
SPCC, CHROMIUM PLATING.  
**HANDLE:**  
CARBON STEEL, CHROMIUM PLATING; TPU, PANTONE BLACK.  
**SPRING:**  
SPRING : 300 SERIES STAINLESS STEEL, NATURAL FINISH.

#### Panel Preparation



#### Knob Color Options



#### Dimensions (mm)

| SCREW LENGTH<br>"T" | SCREW PROJECTION |       | PANEL THICKNESS |         | DIMENSINOS |       |
|---------------------|------------------|-------|-----------------|---------|------------|-------|
|                     | "P-1"            | "P-2" | "A" MIN         | "A" MAX | " L "      | " B " |
| ~                   | ~                | ~     | ~               | ~       | ~          | ~     |

Copyright © Since 2007-2018 Fivetech Technology Inc. All Right Reserved.

## Handle

- Metal structures strong pulling force for bigger case/box/chassis
- Plastic pull handle can reduce slip, heat, static electricity, rust, noise
- Plastic color management is available
- Retractive Handle auto-spring function is also available

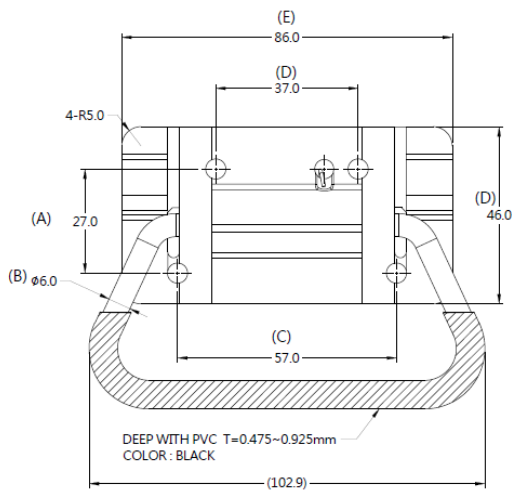
## 71 SERIES Handle-Plastic Patented.



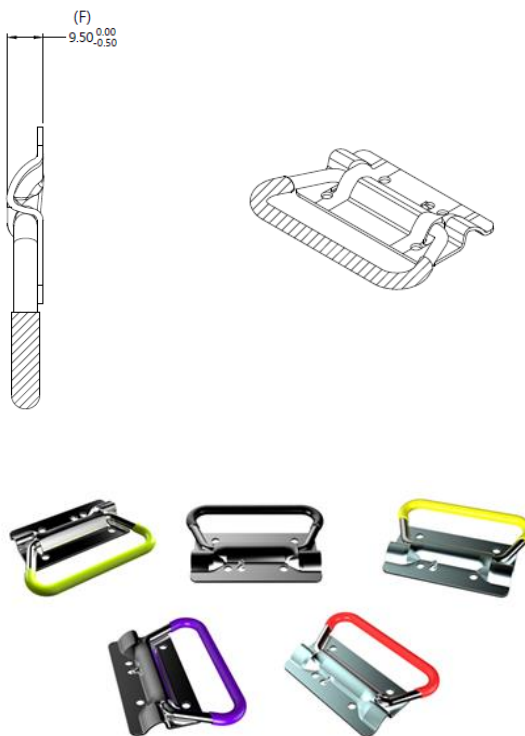
### Material and Finish

**Base :**  
SPCC.CHROMIUM PLATING  
**HANDLE :**  
Carbon Steel. CHROMIUM PLATING, PVC  
**SPRING :**  
300 SERIES STAINLESS STEEL.NATURAL FINISH

### Projection



### Installation Style



### Knob Color Options



### Installation

