

QUARTER-TURN SERIES

- Quarter-turn to lock / unlock two panels, quick release structure
- Easy to operate lock mode
- Effort saving, time efficient

QUARTER-TURN (Wing Type) Patented.



Material and Finish

Knob:
Carbon Steel, Zinc Finish. Plastic

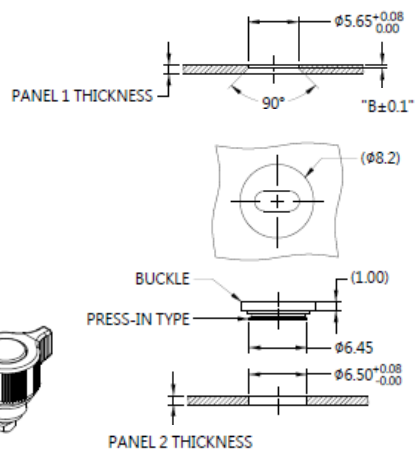
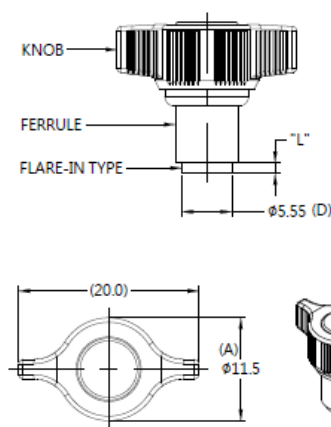
Pin:
Carbon Steel, Zinc Finish

Spring :
300 Series Stainless Steel, Natural Finish

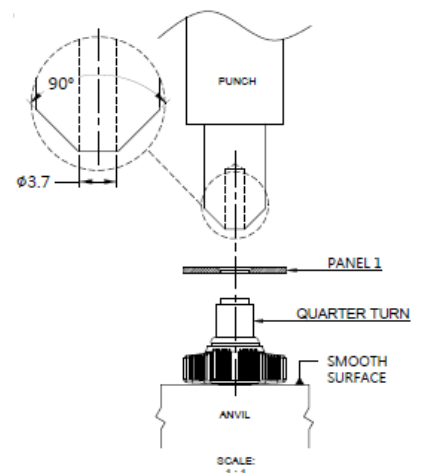
Ferrule:
6000 Series Aluminum, Natural Finish

Buckle:
Carbon Steel, Zinc Finish

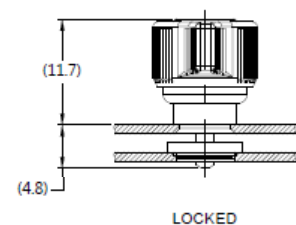
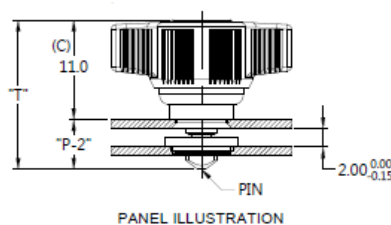
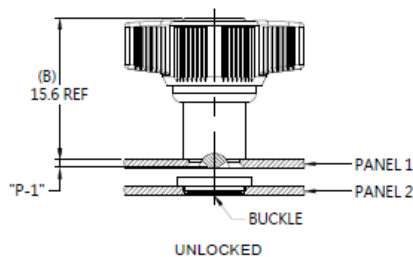
■ Panel Preparation



■ Installation



■ Projection



■ Knob Color Options



■ Dimensions (mm)

| SCREW LENGTH "T" | SCREW PROJECTION | | PANEL THICKNESS | | DIMENSINOS | |
|---------------------|------------------|-----|-----------------|---------|------------|-------|
| | P-1 | P-2 | PANEL 1 | PANEL 2 | " L " | " B " |
| 16.5 | 0.9 | 5.5 | 1.0 | 1.0 | 1.2 | 0.4 |

QUARTER-TURN SERIES

- Quarter-turn to lock / unlock two panels, quick release structure
- Easy to operate lock mode
- Effort saving, time efficient

QUARTER-TURN (Half-wing Type) Patented.



Material and Finish

Knob:
Carbon Steel, Zinc Finish. Plastic

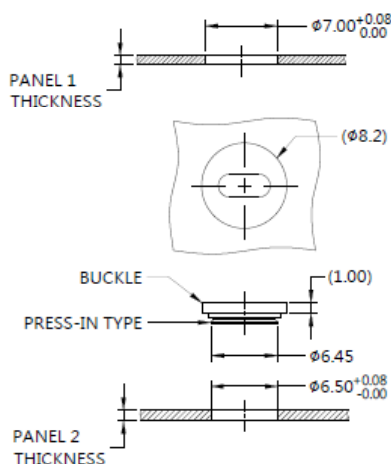
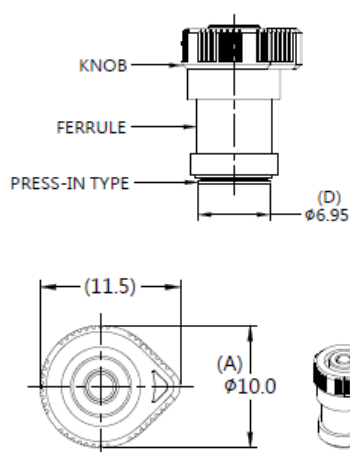
Pin:
Carbon Steel, Zinc Finish

Spring:
300 Series Stainless Steel, Natural Finish

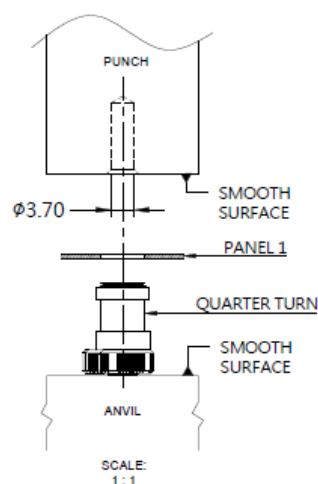
Ferrule:
6000 Series Aluminum, Natural Finish

Buckle:
Carbon Steel, Zinc Finish

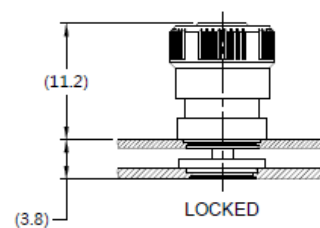
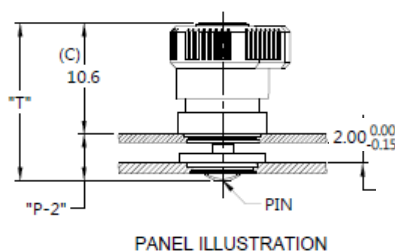
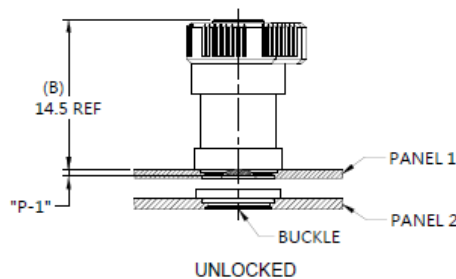
Panel Preparation



Installation



Projection



Knob Color Options



Dimensions (mm)

| SCREW LENGTH "T" | SCREW PROJECTION | | PANEL THICKNESS | | DIMENSINOS | |
|---------------------|------------------|------|-----------------|---------|------------|-------|
| | P-1 | P-2 | PANEL 1 | PANEL 2 | " L " | " B " |
| 15.05 | 0.6 | 4.45 | 0.8 | 1.0 | ~ | ~ |

QUARTER TURN

- Convenient for 2 U or a higher server module.
- Simply press down and turn 1/4 turn to complete assembly/disassembly.
- Bat hole design helps easier to align during operation, speeding up disassembly and assembly.
- The T-shaped handle makes it more effort-saving, meets the humanized operation.
- T-shaped handle 0°/90° positioning function helps save chassis space.

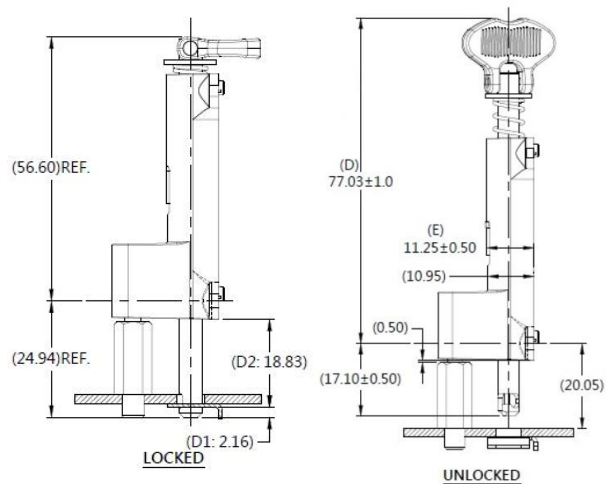
QUARTER LOCK Patented.



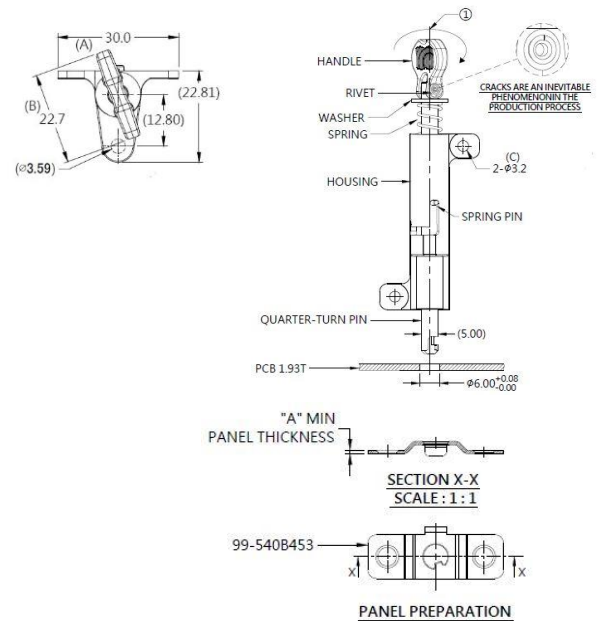
Material and Finish

Push Switch:
Plastic: Pantone Black.
Lever / Ejector Rivet / Spring :
300 Series Stainless Steel, Natural Finish.
Washer / Ferrule / Torsion Spring :
300 Series Stainless Steel, Natural Finish.
Stop Base:
Carbon Steel, Natural Finish.
Nut :
Carbon Steel, Nickel Finish.

Knob High and Screw Projection



Installation Style



Knob Color Options



Dimensions (mm)

| P/N | PANEL THICKNESS "A" | | TYPE |
|------------------|---------------------|-----|--------------------------|
| 56-1641-000-10-6 | MIN | MAX | Side-lock housing design |
| | 0.8 | | |