

PLUNGER

- Efficient performance in assembly, decomposition, and repair.
- Forms one-piece with main structure.
- Hand push could achieve the position and unleash could rebound.

PUSH LOCK Patented.



Material and Finish

Wrench :

Plastic

Rivet :

300 Series Stainless Steel, Natural Finish.

Pin :

Carbon Steel, Zinc Finish.

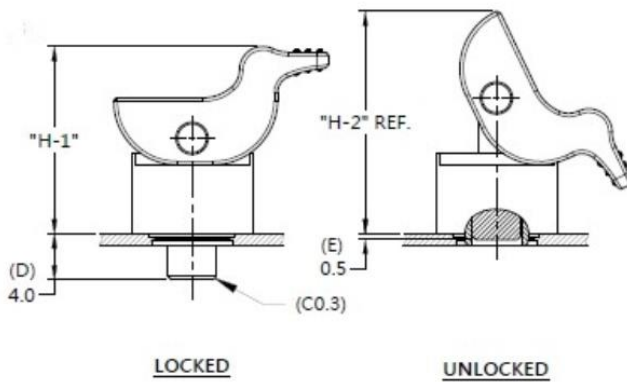
Spring :

300 Series Stainless Steel, Natural Finish.

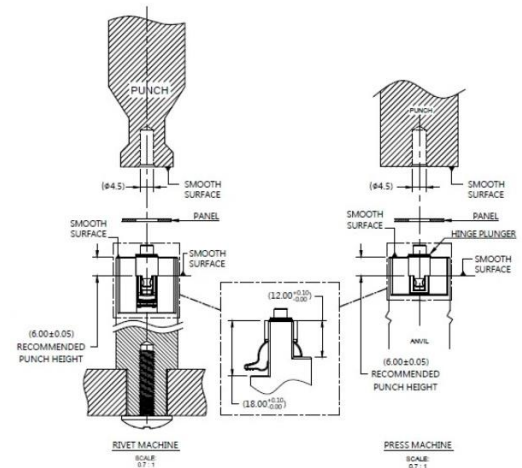
Ferrule :

Carbon Steel, Zinc Finish.

Knob High and Screw Projection



Installation Style



Knob Color Options



Dimensions (mm)

P/N	LENGTH "T"	PROJECTION		PANEL THICKNESS "A"		TYPE
		H1	H2	MIN	MAX	
57-122-203-01-5	20.3	16.3	19.3	1.0	~	PRESS-IN