

## QUARTER-TURN SERIES

- Press to automatic lock panels achieving best working efficiency
- Strong spring force offers automatic locking position function
- Auto QT to lock / unlock two panels, quick release structure
- Easy to operate lock mode
- Effort saving, time efficient

## AUTO-LOCK Patented.



### Material and Finish

**SWITCH:**  
PLASTIC, PANTONE: BLACK.

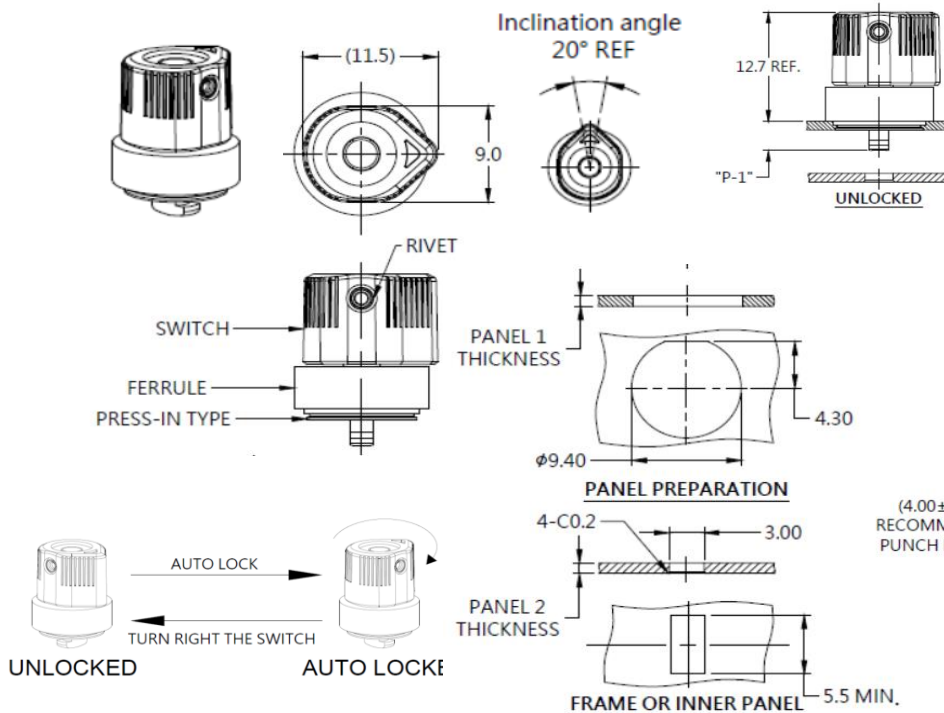
**RIVET:**  
300 SERIES STAINLESS STEEL, NATURAL FINISH.

**PIN:**  
300 SERIES STAINLESS STEEL, NATURAL FINISH.

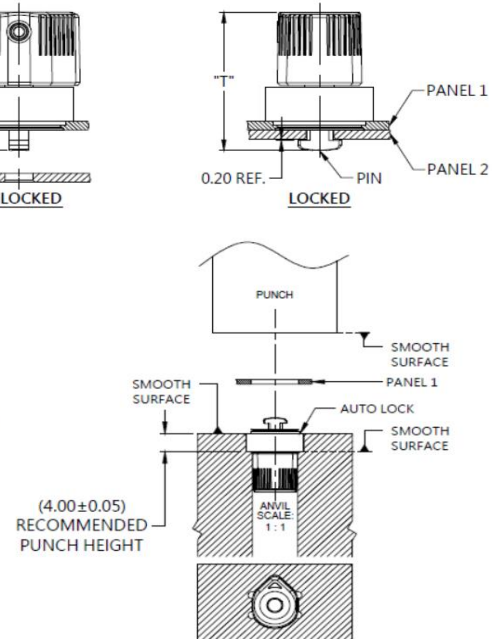
**SPRING:**  
300 SERIES STAINLESS STEEL, NATURAL FINISH.

**FERRULE:**  
300 SERIES STAINLESS STEEL, NATURAL FINISH.

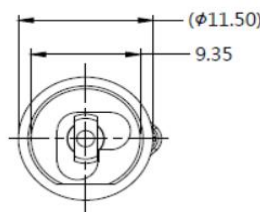
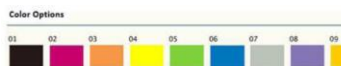
### ■ Panel Preparation



### ■ Installation



### ■ Knob Color Options



### ■ Dimensions (mm)

LENGTH "T"	PROJECTION		PANEL THICKNESS		DIMENSIONS	
	"P-1"	"P-2"	PANEL 1	PANEL 2	" L "	" B "
16.1	3.4		1.0	1.0	~	~

Copyright© Since 2007-2019 Fivetech Technology Inc. All Right Reserved.