

SMART ANGLE HANDLE

- When the product is used in space restrictions, when the servo chassis cannot be installed with a standard handle, it is convenient to store the handle on the inside of the chassis.
- Pulling up through the front wrench, the shaft can move the handle up
- When pulling the handle, pull the connecting rod out of the extension height and increase the holding space.
- By attaching the height when pulled out, it is possible to avoid hand interference or touching the parts or other devices on the host substrate during pulling.
- It is easy to press down and storage the handle back, shrink the handle extra height and push it down-forward back to its original position

SMART ANGLE HANDLE

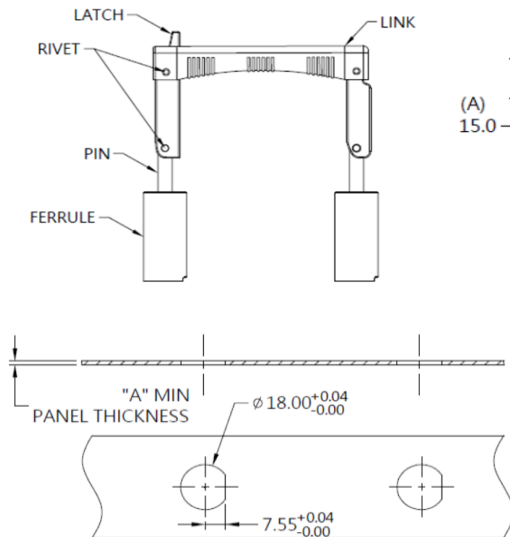
Patented.



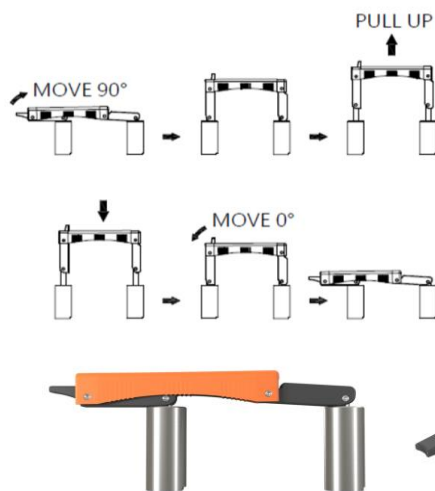
Material and Finish

LATCH :
PLASTIC : PANTONE 1585C. (ORANGE)
LINK :
PLASTIC : PANTONE BLACK.
PIN :
300 SERIES STAINLESS STEEL , NATURAL FINISH.
FERRULE :
300 SERIES STAINLESS STEEL , ZINC FINISH.
SPRING :
300 SERIES STAINLESS STEEL , NATURAL FINISH.
RIVET :
300 SERIES STAINLESS STEEL , NATURAL FINISH.

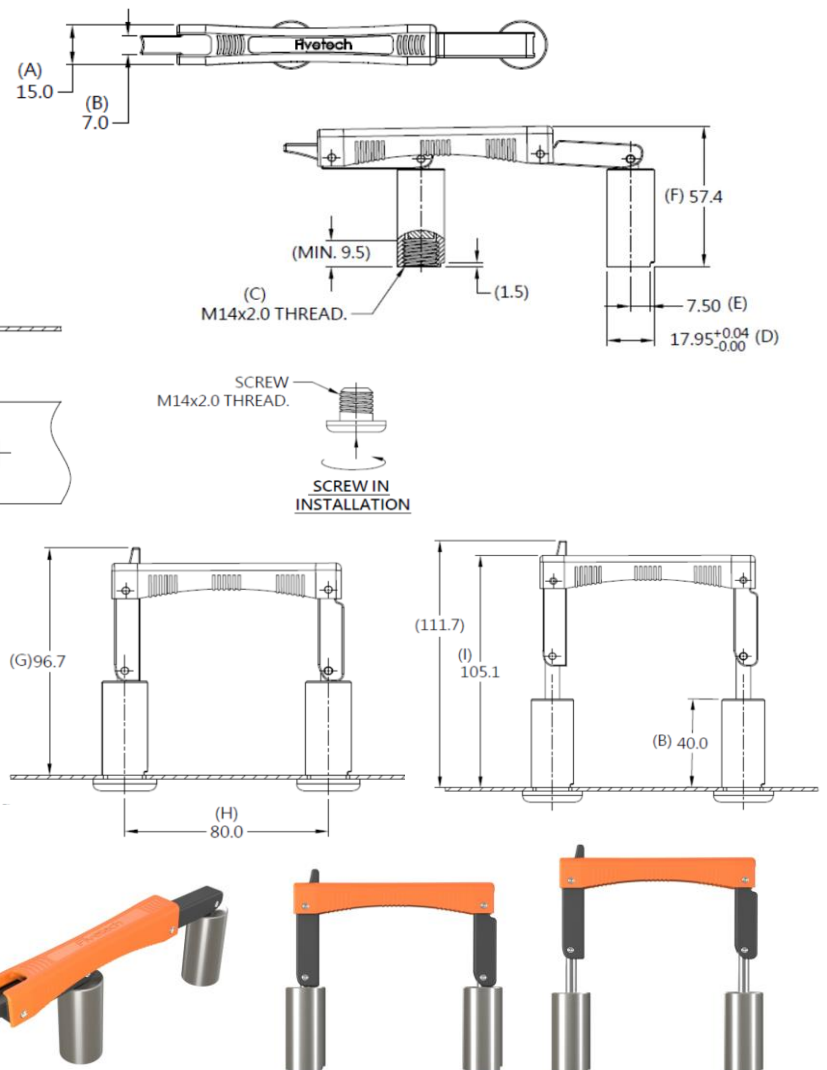
Panel Preparation



PANEL PREPARATION



Installation



Dimensions (mm)

SCREW LENGTH "T"	SCREW PROJECTION		PANEL THICKNESS		DIMENSINOS	
	P-1	P-2	"A" MIN	"A" MAX	" L "	" B "
~	~	~	1.6	~		