

## SMT Wheel Roller

- Wheel Rollers installed on board, to accelerate the thrust/tensile
- Designate to accelerate the maintenance efficiency performance
- Energy saving, effort saving, time efficiency

### Wheel Roller- SMT type Patented.

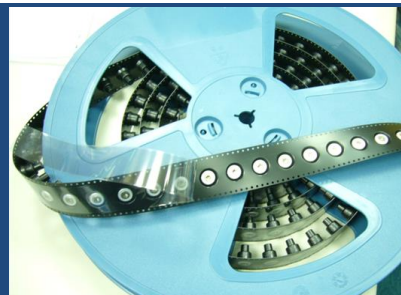


#### Material and Finish

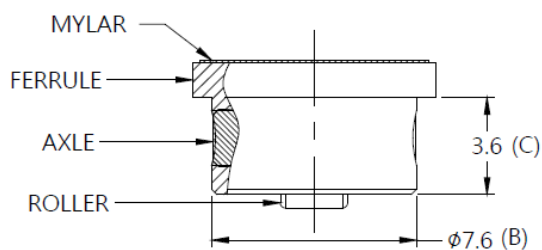
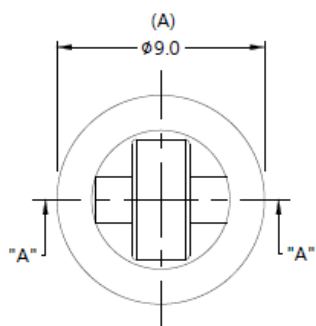
**Ferrule :**  
300 Series Stainless Steel, Natural Finish.

**Axle :**  
Carbon Steel, Zinc Finish.

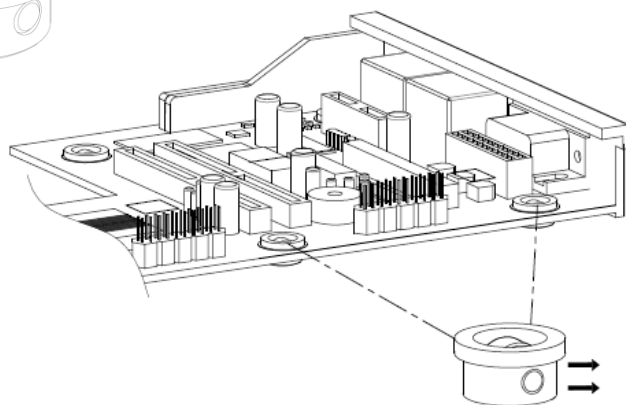
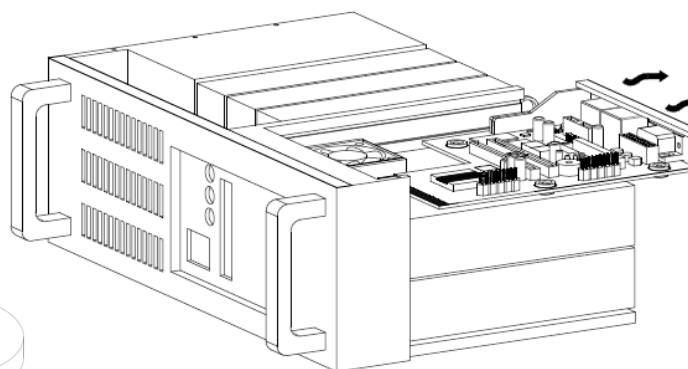
**Roller :**  
300 Series Stainless Steel, Natural Finish.



### ■ Panel Preparation



### ■ Installation Style



### ■ Dimensions(mm)

PANEL THICKNESS		(A)	(B)	(C)	(D)	(E)	(F)
MIN	MAX						
1.6	~	9	7.6	2.5	0.5	3.6	1.3