

ANGLE SERIES

- Innovative angled fastening function
- Designed for flexible angle installing directions
- Offers diverse locking angles for chassis designs
- Fast positioning tool-less design increases operating convenience

ANGLE CAPTIVE SCREW Patented.



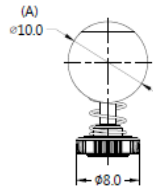
Material and Finish

Screw :
Carbon Steel, Zinc Finish. Plastic

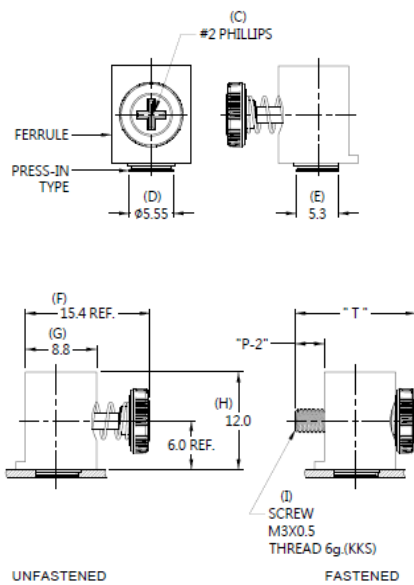
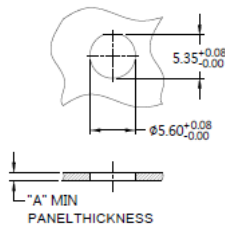
Spring :
300 Series Stainless Steel, Natural Finish

Ferrule :
Carbon Steel, Zinc Finish

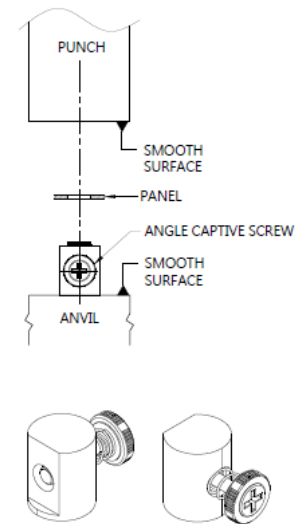
Projection



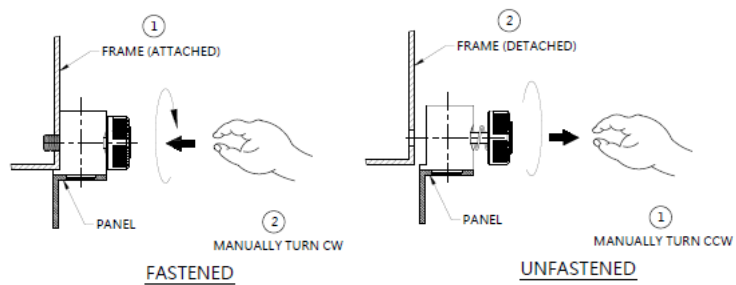
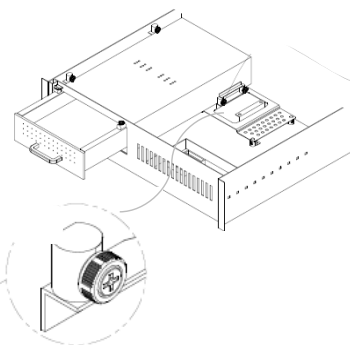
Panel Preparation



Installation



Application



Knob Color Options



Dimensions (mm)

SCREW LENGTH "T"	SCREW PROJECTION		PANEL THICKNESS		DIMENSINOS	
	P-1	P-2	"A" MIN	"A" MAX	"L"	"B"
14.9	~	3.6	1.0	~	~	~

Copyright © Since 2007-2016 Fivetech Technology Inc. All Right Reserved.