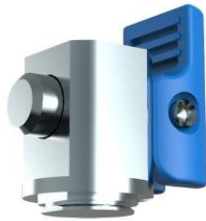


ANGLE SERIES

- Innovative angled fastening function
- Designed for flexible angle installing directions
- Offers diverse locking angles for chassis designs
- Latch plunger offers tool-less, quick assembly, efficient in performance
- Hand pull 90° to achieve quick positioning

ANGLE LATCH PLUNGER Patented.



Material and Finish

Wrench :

Plastic

Rivet :

300 Series Stainless Steel, Natural Finish

Pin :

Carbon Steel, Zinc Finish

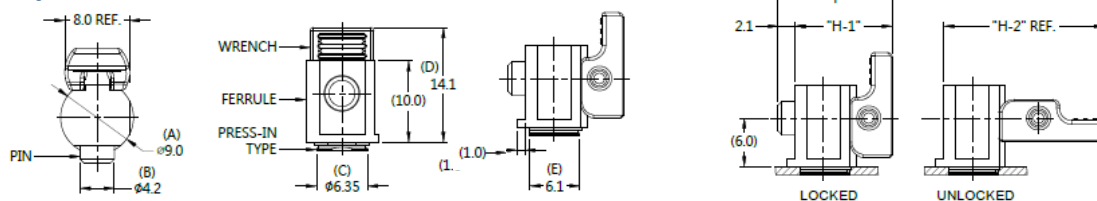
Spring :

300 Series Stainless Steel, Natural Finish

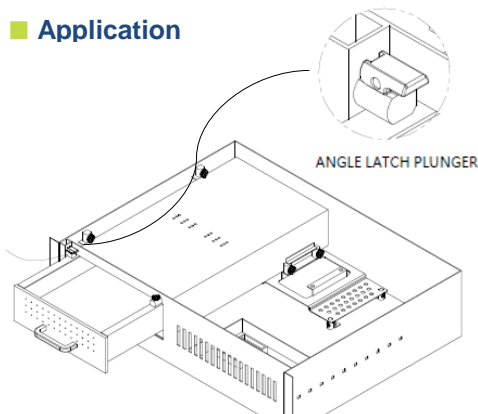
Ferrule :

Carbon Steel, Zinc Finish

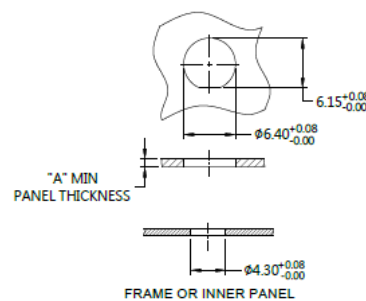
■ Projection



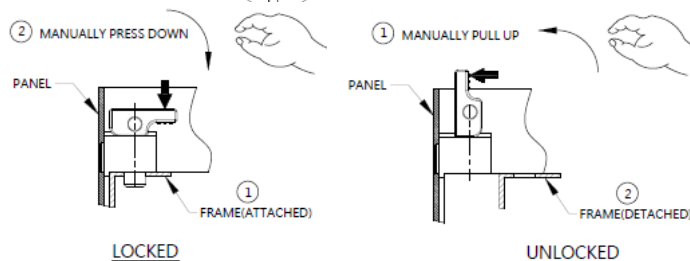
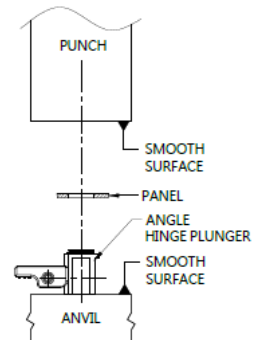
■ Application



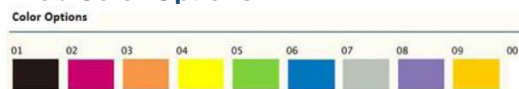
■ Panel Preparation



■ Installation



■ Knob Color Options



■ Dimensions (mm)

SCREW LENGTH "T"	SCREW PROJECTION		PANEL THICKNESS		DIMENSINOS	
	"H-1"	"H-2"	"A" MIN	"A" MAX	"L "	" B "
14.1	12.0	19.8	1.0	~	~	~

Copyright © Since 2007-2016 Fivetech Technology Inc. All Right Reserved.