

ANGLE SERIES

- Innovative angled fastening function
- Designed for flexible angle installing directions
- Offers diverse locking angles for chassis designs
- Plunger design offers tool-less, quick assembly, efficient in performance

ANGLE PLUNGER Patented.



Material and Finish

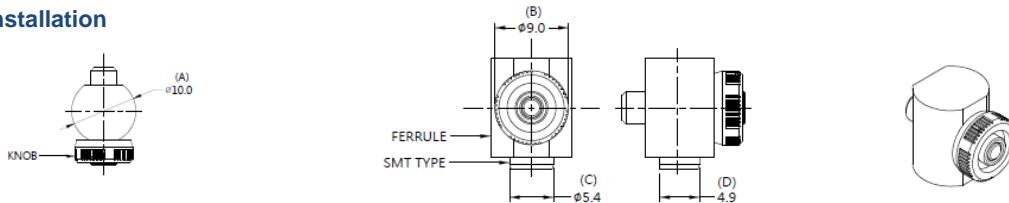
Knob:
Carbon Steel, Zinc Finish. Plastic.

Pin:
Carbon Steel, Zinc Finish

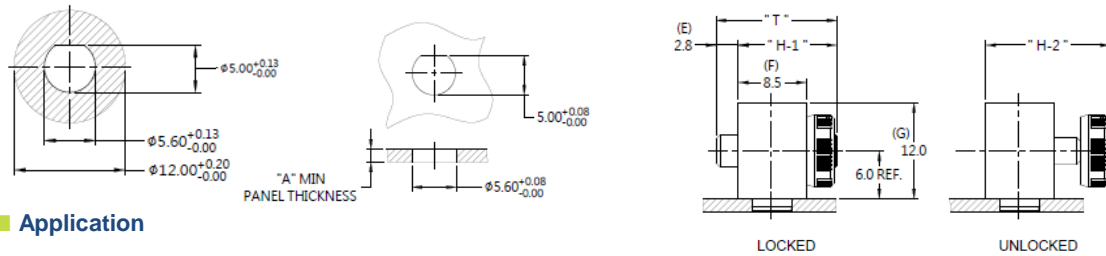
Spring :
300 Series Stainless Steel, Natural Finish

Ferrule:
Carbon Steel, Tin Finish

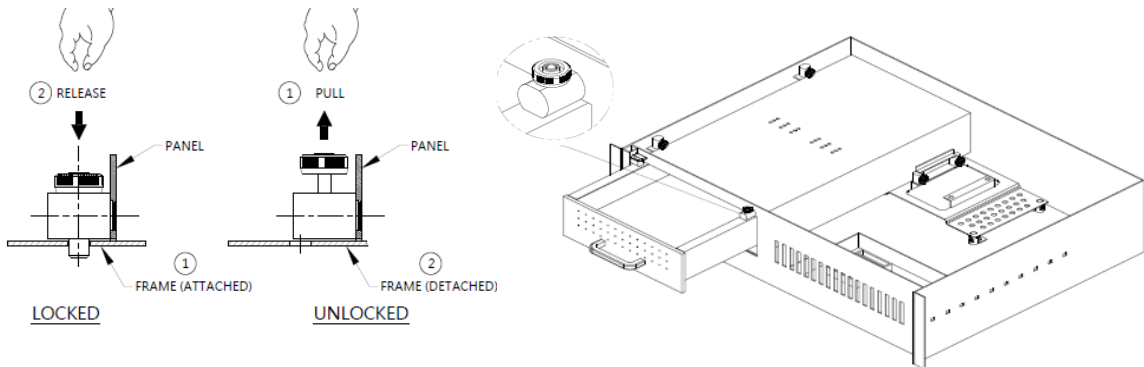
Installation



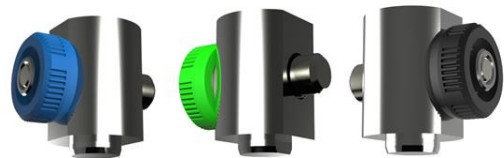
Panel Preparation



Application



Knob Color Options



Dimensions (mm)

PIN LENGTH "T"	PIN PROJECTION		PANEL THICKNESS		DIMENSINOS	
	H-1	H-2	"A" MIN	"A" MAX	" L "	" B "
15.1	12.3	15.6	1.6	~	~	~

Copyright © Since 2007-2016 Fivetech Technology Inc. All Right Reserved.