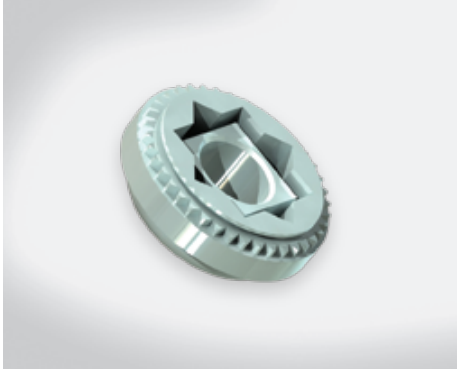


- Eight-star-shape float nut design overcomes over offset of screw fixing
- Press-in mounting joint quick assembly
- High assembling strength design avoids common risk of losing nut
- The specification could be customized

84 SERIES patented.

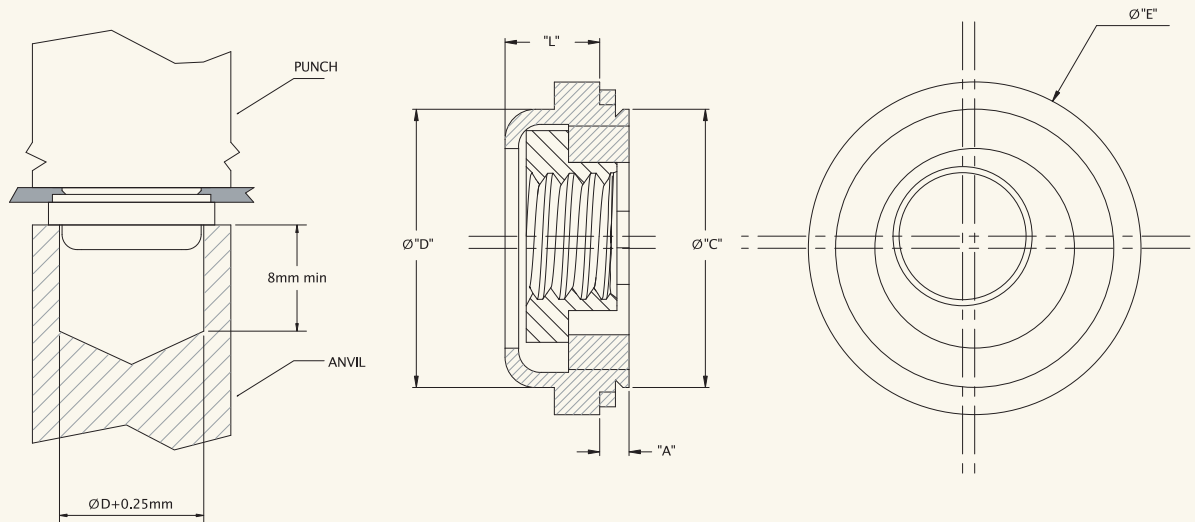


Material and Finish

Retainer:
Low carbon steel, zinc finish.

Nut:
Low carbon steel, zinc finish.

■ Panel Preparation and Installation



■ Outer Panel Dimensions "A" Min 1.0mm

mm

THREAD SIZE	A MAX.	ØC MAX.	ØD MAX.	ØE ±0.2	HOLE SIZE IN SHEET +0.08	TOTAL FLOAT	PART NUMBER "L" Max.
							3.31
M4	0.97	9.33	9.28	11.18	9.4	0.8	84-512-24-033
#8-32	0.97	9.33	9.28	11.18	9.4	0.8	84-612-24-033