

STANDOFF

- Spring force increases spool securing tightness
- Decrease loosening possibility caused by vibration
- Spool designed for easy assembly, quick release purposes
- Lateral fastening contributes to direction limited two panels

Spring Spool Patented.



Material and Finish

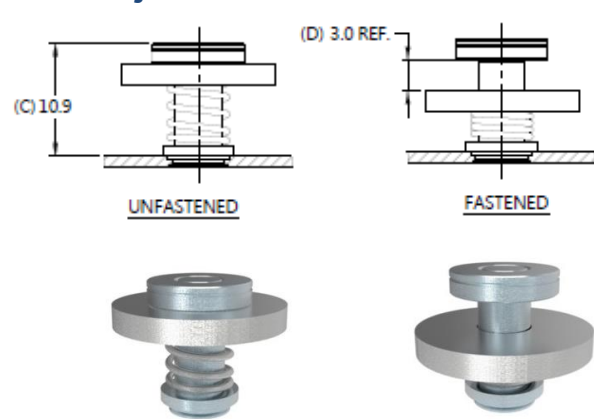
Cap :
Carbon Steel, Zinc Finish

Spool :
Carbon Steel, Zinc Finish

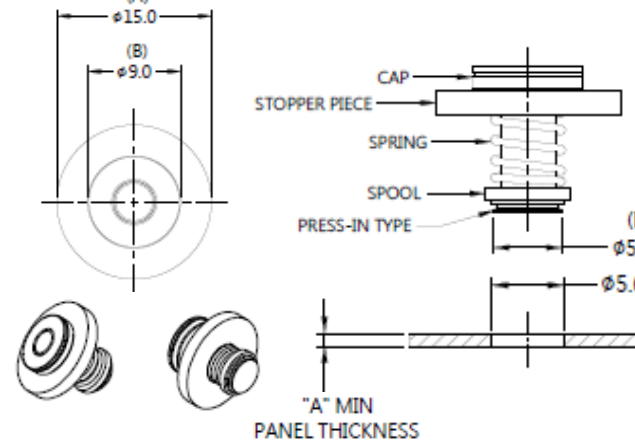
Spring :
300 Series Stainless Steel, Natural Finish.

Stopper Piece :
300 Series Stainless Steel, Natural Finish.

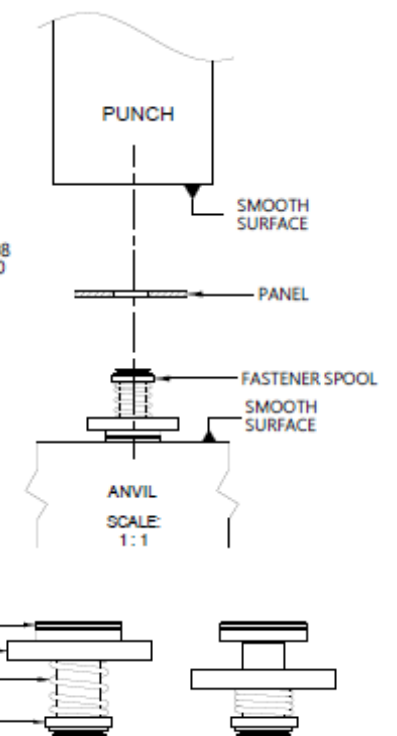
■ Projection



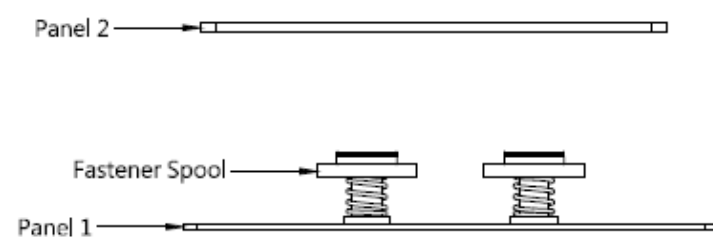
■ Panel Preparation



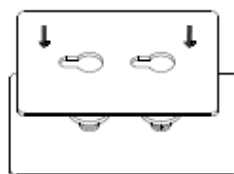
■ Installation



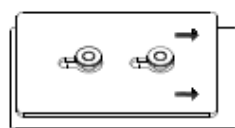
■ Application



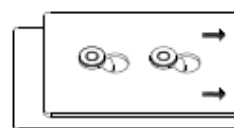
STEP 1.



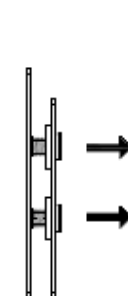
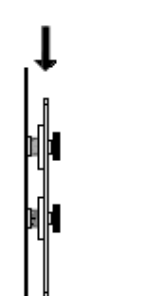
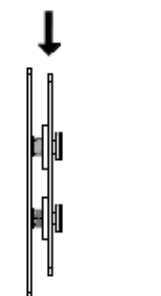
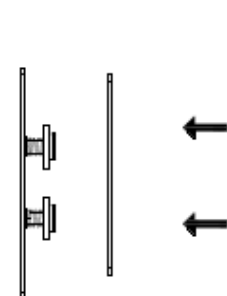
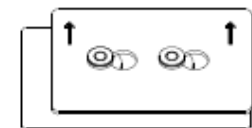
STEP 2.



STEP 3.



STEP 4.



■ Dimensions (mm)

SCREW LENGTH "T"	SCREW PROJECTION		PANEL THICKNESS		DIMENSINOS	
	"P-1"	"P-2"	"A" MIN	"A" MAX	" L "	" B "
~	~	~	1.0	~	~	~