

RING PULL SERIES

- Specially designed knob offers handle pulling function
- Strong force endurance design increases product reliability
- Ring Pull knob adds operation convenience when screwing and unscrewing
- Ring pull design provides multifunctional advantages
- plastic color and product specification can be customized

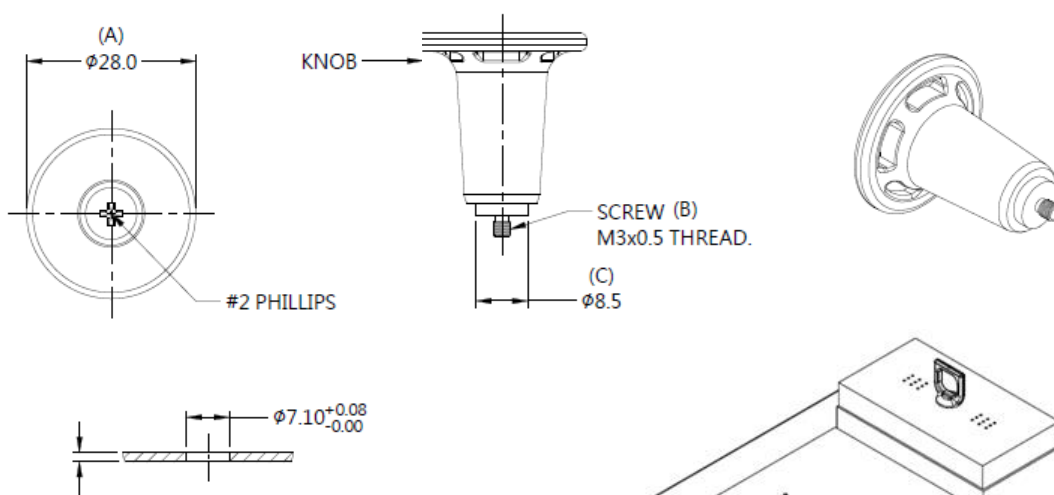
RING PULL SERIES - 28mm Knob type Patented.



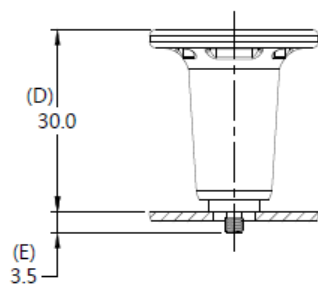
Material and Finish

Knob :
Plastic
Screw :
Carbon Steel, Zinc Finish

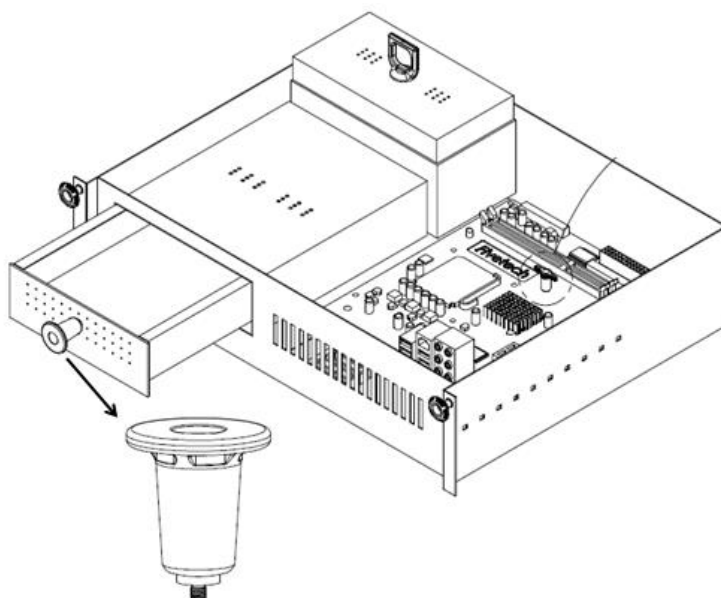
Panel Preparation



Installation



INSTALLATION



Dimensions (mm)

SCREW LENGTH "T"	SCREW PROJECTION		PANEL THICKNESS		DIMENSINOS	
	"P-1"	"P-2"	"A" MIN	"A" MAX	" L "	" B "
~	~	~	1.6	~	~	~