

Handle

- Metal structures strong pulling force for bigger case/box/chassis
- Plastic pull handle can reduce slip, heat, static electricity, rust, noise
- Plastic color management is available
- Retractive Handle auto-spring function is also available

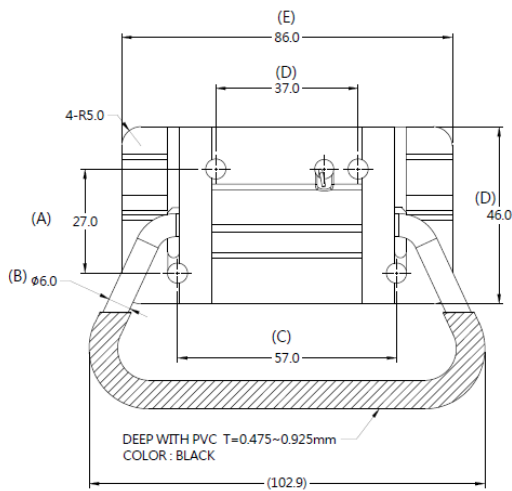
71 SERIES Handle-Plastic Patented.



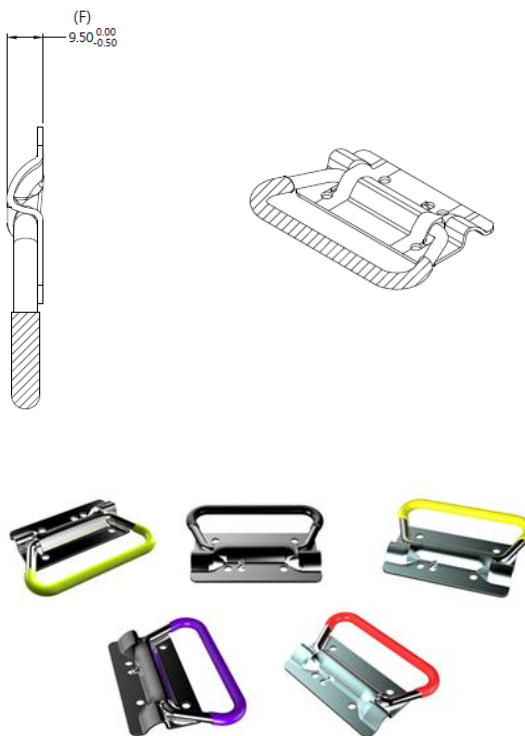
Material and Finish

Base :
SPCC.CHROMIUM PLATING
HANDLE :
Carbon Steel. CHROMIUM PLATING, PVC
SPRING :
300 SERIES STAINLESS STEEL.NATURAL FINISH

■ Projection



■ Installation Style



■ Knob Color Options



■ Installation

