

## QUARTER-TURN SERIES

- One press to automatic lock panels, achieving best working efficiency
- Strong spring force offers automatic locking position function
- Quarter-turn to unlock two panels, quick release structure
- Easy to operate lock mode
- Effort saving, time efficient

## AUTO-LOCK QUARTER-TURN (half-wing Type) Patented.



### Material and Finish

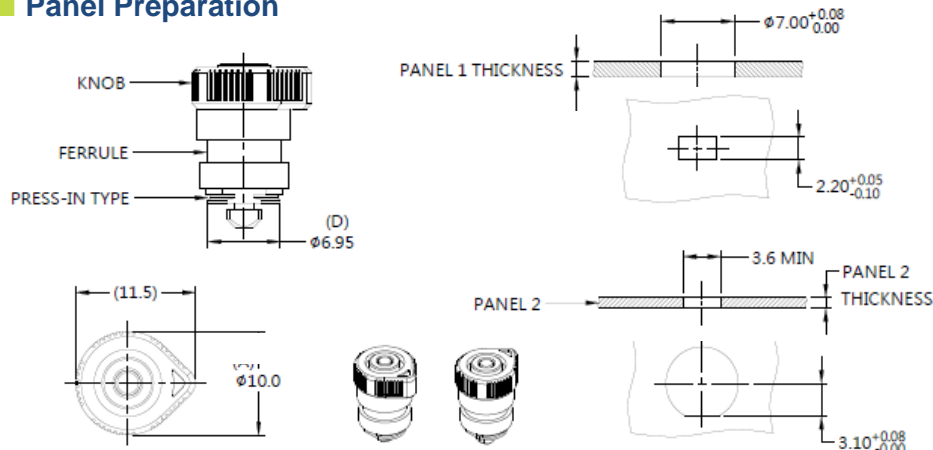
**Knob:**  
Carbon Steel, Zinc Finish. Plastic

**Pin:**  
Carbon Steel, Zinc Finish

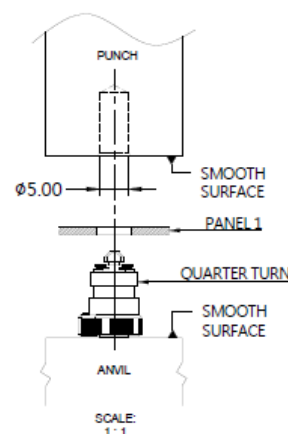
**Spring :**  
300 Series Stainless Steel, Natural Finish

**Ferrule:**  
Carbon Steel, Zinc Finish

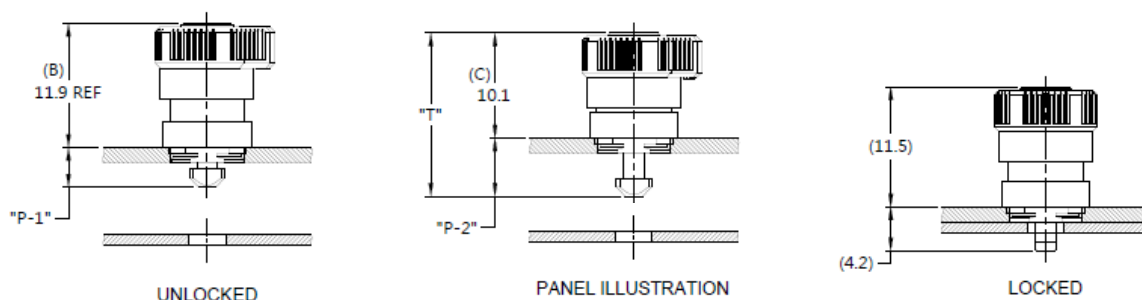
### Panel Preparation



### Installation



### Projection



### Knob Color Options



### Dimensions (mm)

SCREW LENGTH "T"	SCREW PROJECTION		PANEL THICKNESS		DIMENSINOS	
	P-1	P-2	PANEL 1	PANEL 2	" L "	" B "
16.5	2.0	4.6	1.5	1.0	~	~