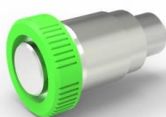


PLUNGER

- Efficient performance in assembly, decomposition, and repair
- Fast installation and removal for sliding module.
- Color management for plastic is available as required by customers.

57 SERIES PLUNGER $\phi 13\text{mm}$ Patented.



Material and Finish

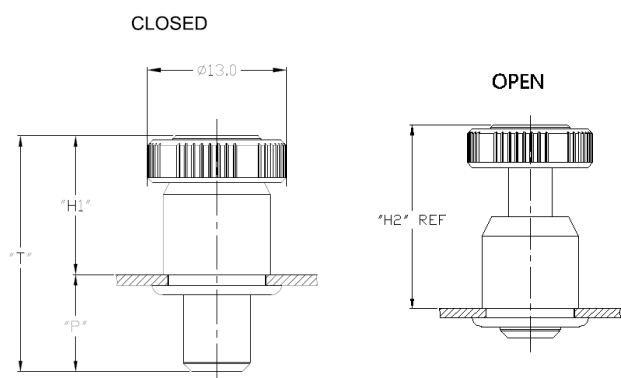
Knob :
Carbon Steel, Zinc Finish, Plastic

Pin :
Carbon Steel, Zinc Finish.

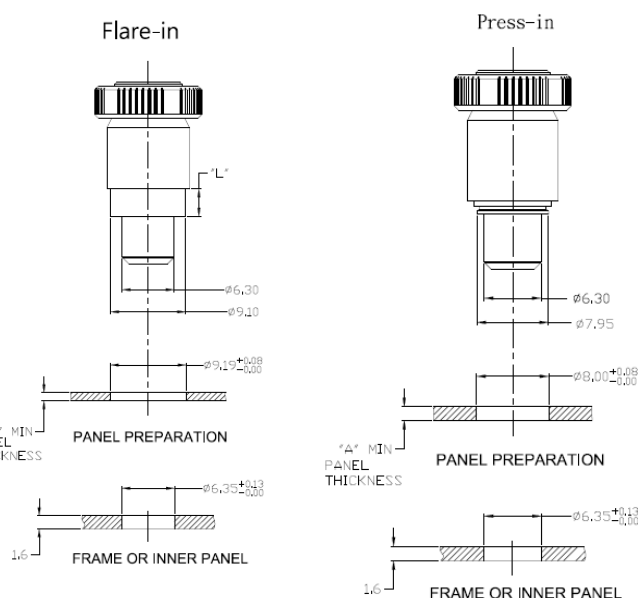
Spring :
300 Series Stainless Steel, Natural Finish.

Ferrule :
6000 Series Aluminum, Natural Finish.

Projection



Installation Style



Knob Color Options

Standard colors



Dimensions

INSTALLATION STYLE	PANEL THICKNESS		T	P	H-1 CLOSED	H-2 OPEN	L
	A MIN	A MAX					
FLARE-IN	1.0	-	22.1	9.1	13.0	19.05	3.3
PRESS-IN	1.5	-	22.1	7.6	14.5	20.5	-