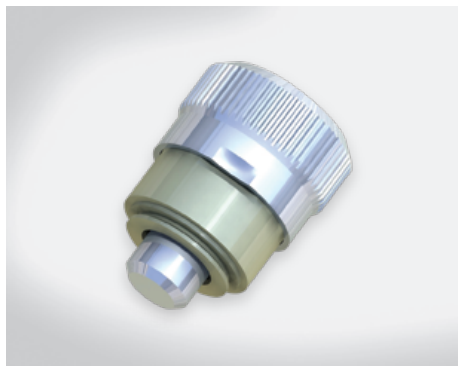


- Efficient performance in assembly,decomposition,and repair
- Forms one-piece with main structure,hand pull could achieve the positioning
- Hold open feature available. Pull and turn for locking, easy to operate
- Small, compact design for limited space

301 SERIES PRESS-IN patented.



Material and Finish

Stud:

Hardened carbon steel, zinc finish.

Pin cap:

Hardened carbon steel, zinc finish.

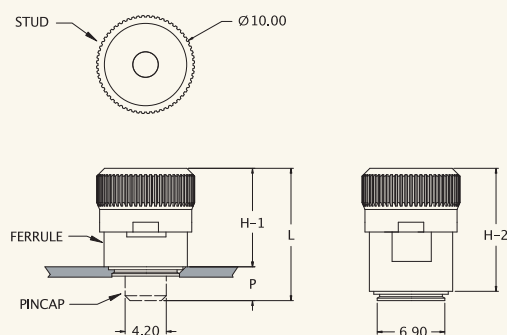
Spring:

300 series stainless steel.

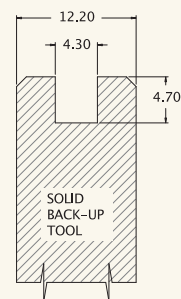
Ferrule:

Hardened carbon steel, nickel finish.

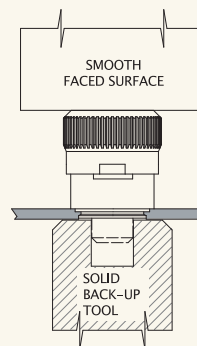
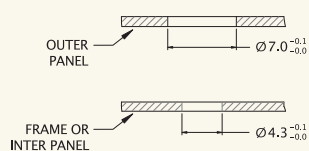
■ Press-in



- Press-in with approximately 10,500 N for steel panels until ferrule sits flush with panel.



■ Installation



■ Dimensions

mm

PANEL THICKNESS		P	KNOB STYLE	PART NUMBER	H-1 CLOSED	H-2 OPEN	L
MIN	MAX						
1.0	1.5	3.4	Bright	57-301	10.0	12.5	13.5