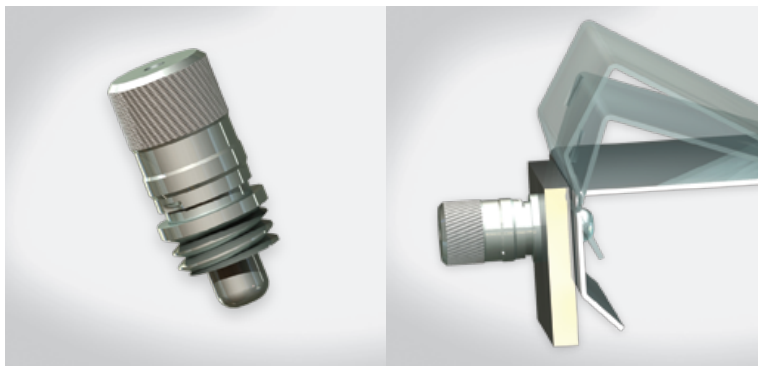


- Efficient performance in assembly, decomposition, and repair
- Forms one-piece with main structure, hand pull could achieve the positioning
- Hold open feature available. Pull and turn for locking, easy to operate

## 901 SERIES THREAD-IN patented.



### Material and Finish

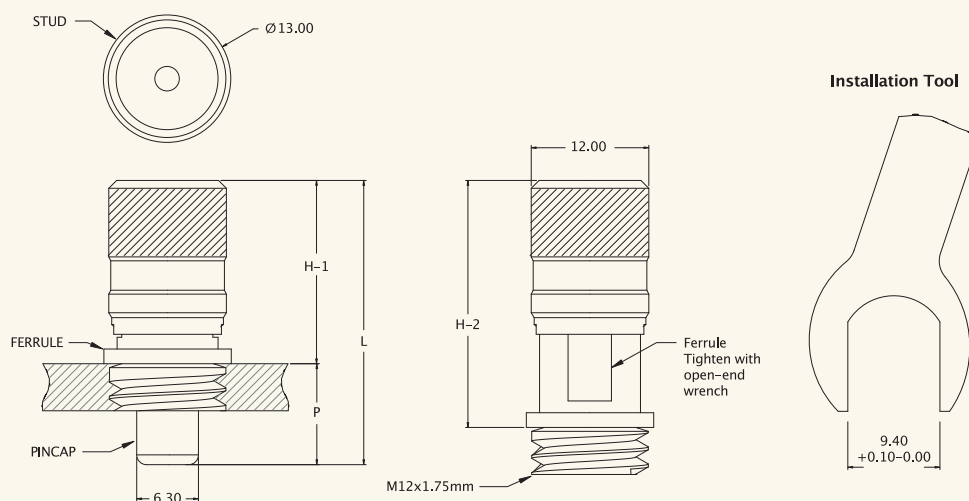
**Stud:**  
Hardened carbon steel, zinc finish.

**Pincap:**  
Hardened carbon steel, zinc finish.

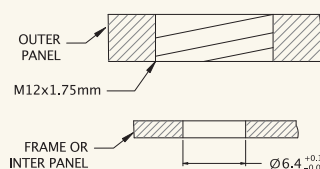
**Spring:**  
300 series stainless steel.

**Ferrule:**  
Hardened carbon steel, zinc finish.

### ■ Thread-in



### ■ Installation



### ■ Dimensions

mm

PANEL THICKNESS		P	KNOB STYLE	PART NUMBER	H-1 CLOSED	H-2 OPEN	L
MIN	MAX						
4.8	5.5	10.3	Knurled	57-901	18.7	25.2	29