

Plunger

- Efficient performance in assembly, decomposition, and repair.
- Forms one-piece with main structure.
- Hand pull could achieve the positioning.

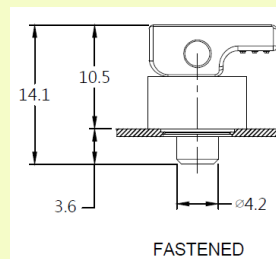
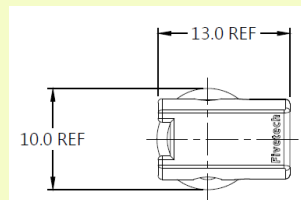
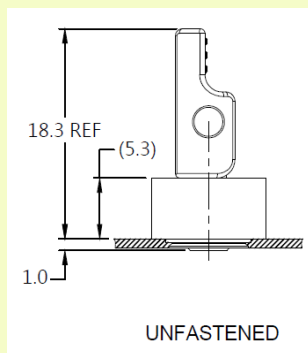
Mini Latch Plunger Patented.



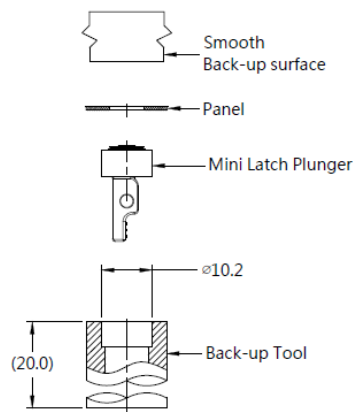
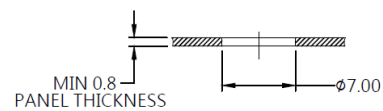
Material and Finish

Wrench :
Plastic.
Rivet :
300 Series Stainless Steel, Natural Finish.
Pin :
Carbon Steel, Zinc Finish.
Ferrule :
Carbon steel, Zinc Finish.
Spring :
300 Series Stainless Steel, Natural Finish.

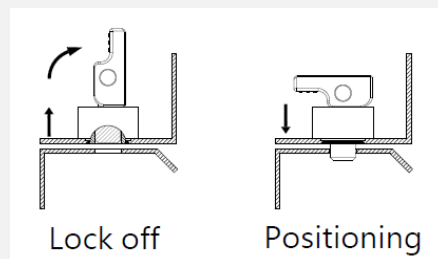
■ Wrench Size and Projection



■ Panel Preparation and Installation



■ Application



■ knob color options

