

## SMT NUT & Standoff

- SMT full automatic reflow process can increase production stability and production efficiency
- Welding for reinstallation can increase product reliability

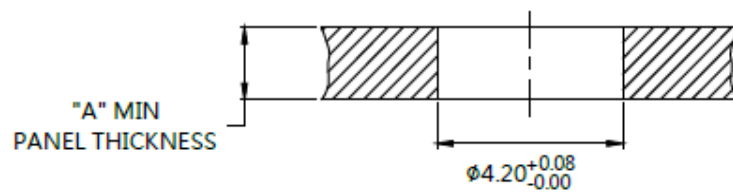
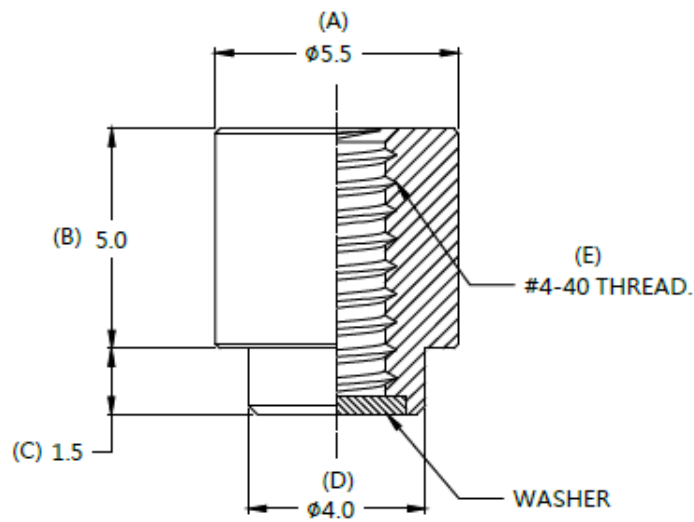
### 82 SERIES SMT NUT - #4-40 THREAD Patented.



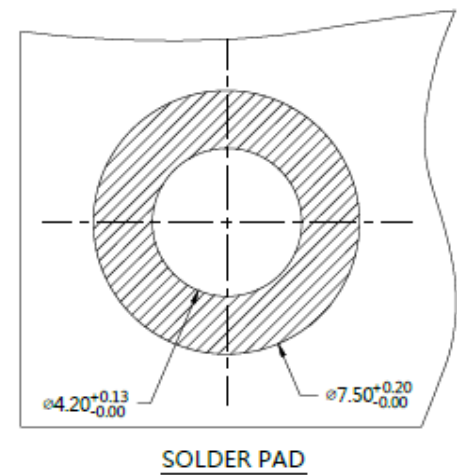
#### Material and Finish

**Nut :**  
Carbon Steel, Tin Finish.  
**Washer :**  
PTFE.

#### ■ Projection



#### ■ Installation Style



#### ■ Dimensions (mm)

SCREW LENGTH "T"	SCREW PROJECTION		PANEL THICKNESS		DIMENSINOS	
	P-1	P-2	A,MIN	A,MAX	"L"	"B"
~	~	~	1.6	~	~	~