

## SMT NUT & Standoff

- SMT full automatic reflow process can increase production stability and production efficiency
- Welding for reinstallation can increase product reliability

### 82 SERIES SMT NUT - M6 THREAD Patented.

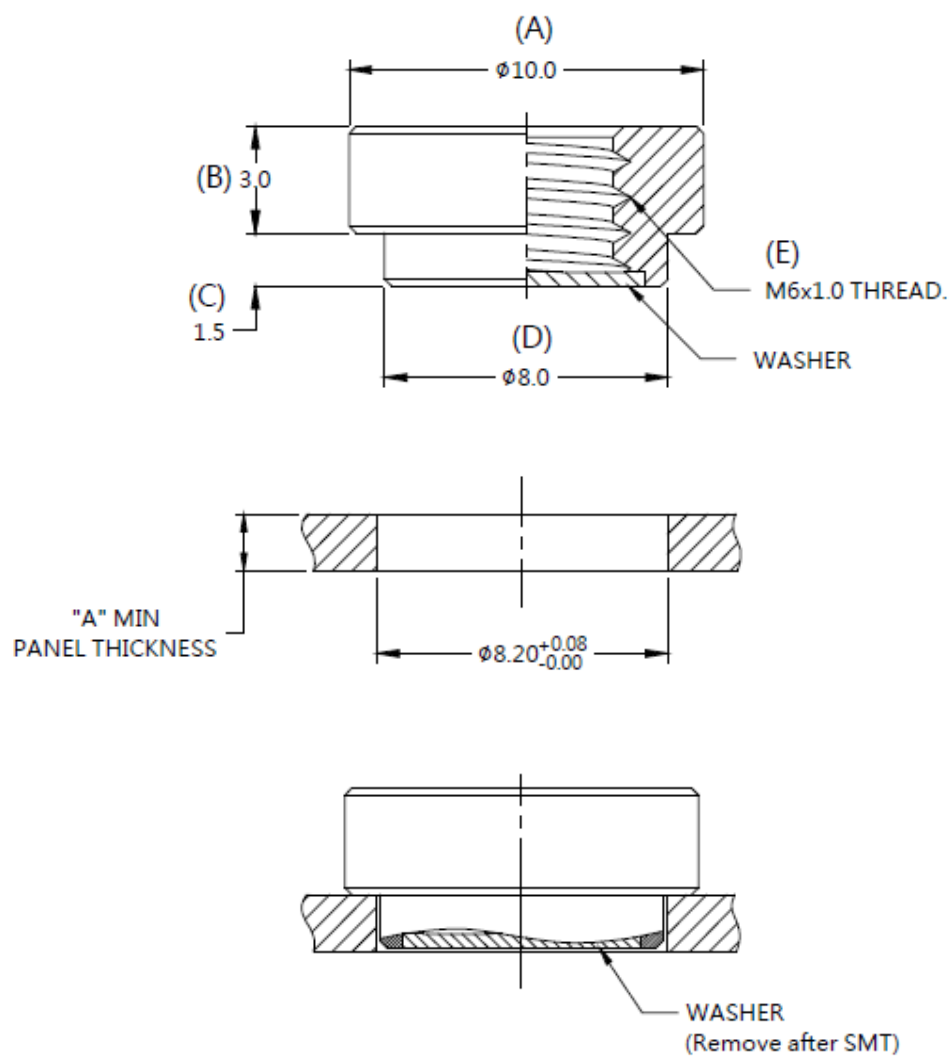


#### Material and Finish

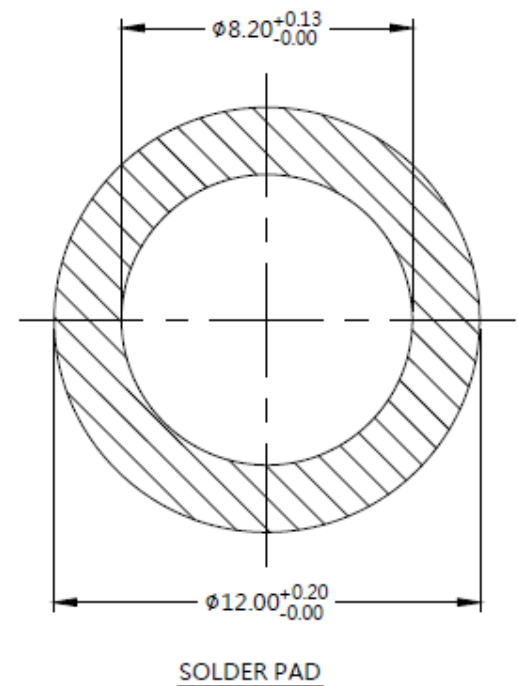
**Nut :**  
Carbon Steel, Tin Finish.

**Washer :**  
PTFE.

#### ■ Panel Preparation



#### ■ Installation



#### ■ Dimensions (mm)

SCREW LENGTH "T"	SCREW PROJECTION		PANEL THICKNESS		DIMENSINOS	
	P-1	P-2	A, MIN	A, MAX	" L "	" B "
~	~	~	1.6	~	~	~