

## Captive Fastener

- Innovative lock-pin design, structure a new style of quarter turn Captive Fastener
- 1/4 quarter turn to lock/unlock two panels, quick release structure
- Energy saving, time efficiency, production cost down.
- Plastic knob or Metal Knob is available.
- Plastic knob color management is available.

### 1/4 Quarter Turn / 96 SERIES Captive Fastener-SMT type Ø11.5mm Patented.



#### Material and Finish

**Knob :**  
Plastic.

**Screw :**  
Carbon Steel, Zinc Finish.

**Spring :**  
300 Series Stainless Steel, Natural Finish.

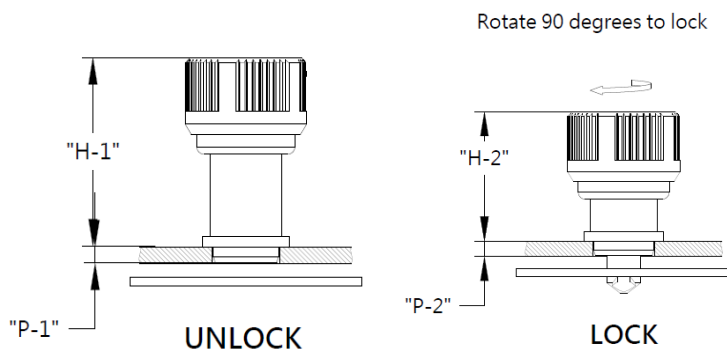
**Ferrule :**  
Carbon Steel, Tin Finish.

**Buckle :**  
Carbon Steel, Tin Finish.

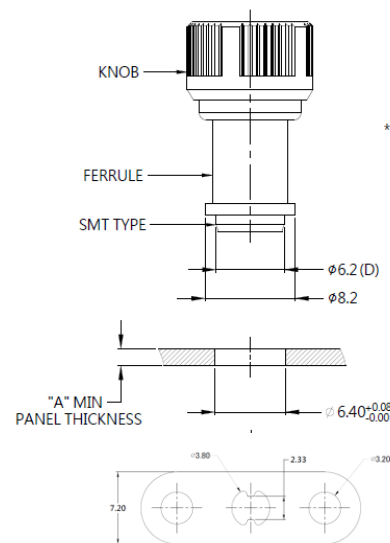
#### REEL



#### ■ Knob High and Screw Projection



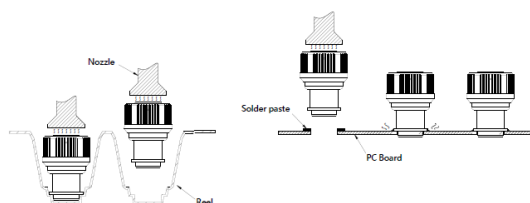
#### ■ Installation Style



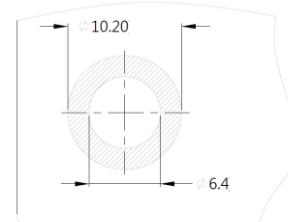
#### ■ Knob Color Options



#### ■ Installation



#### PANEL PREPARATION



#### ■ Dimensions(mm)

OUTER PANEL DIMENSIONS		SCREW PROJECTION			KNOB HEIGHT	
A MIN	A MAX	T	P-1	P-2	H-1	H-2
1.6	-	18.9	0.8	5.8	17.8 REF	13.1 REF