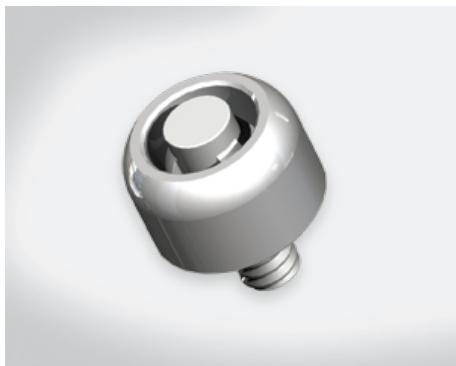


Security Kit 440, safety lock with mechanical mechanism

- Required key to open the lock
- Required little space so that there is no problem with mechanical interference
- The head has independent idle mechanism and is perfect for anti-theft

440 SERIES patented.



Material and Finish

Screw:

Hardened carbon steel, nickel finish.

Ferrule:

Hardened carbon steel, nickel finish.

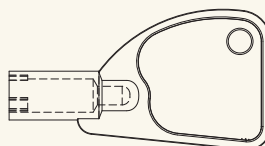
Key:

Zinc Alloy(Die-Cast), zinc finish.

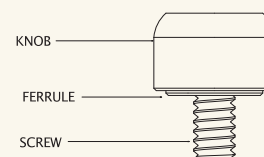
■ Recess Style



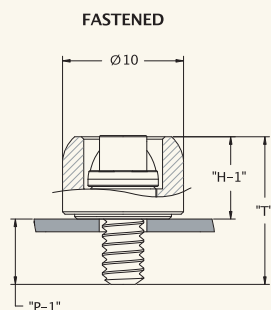
■ Driver Key



■ Installation Style

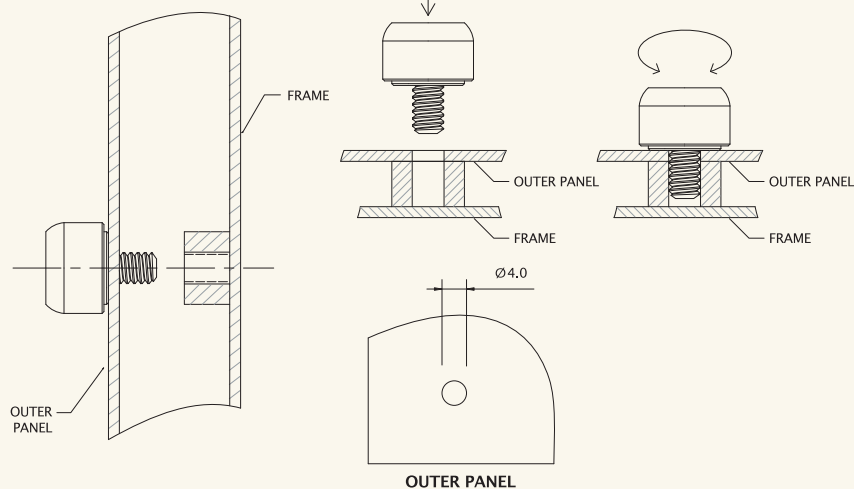


■ Knob Height and Screw Projection



■ Panel Applications and Installation

Knob runs idle on mechanism pieces after screw is locked as safety set screw mode



■ Dimensions

mm

THREAD	SCREW PROJECTION			TOTAL FLOAT	PART NUMBER
	T	P-2	H-1		
6-32	12.2	5.4	6.8	0.4	36-440-122
	13.7	6.9			36-440-137