

FASTENER SCREW

- Extra petite appearance specially designed for limited space
- Hand screw design increases operation convenience
- Spring design adds hand operation ease and product durability
- Plastic knob color management is available

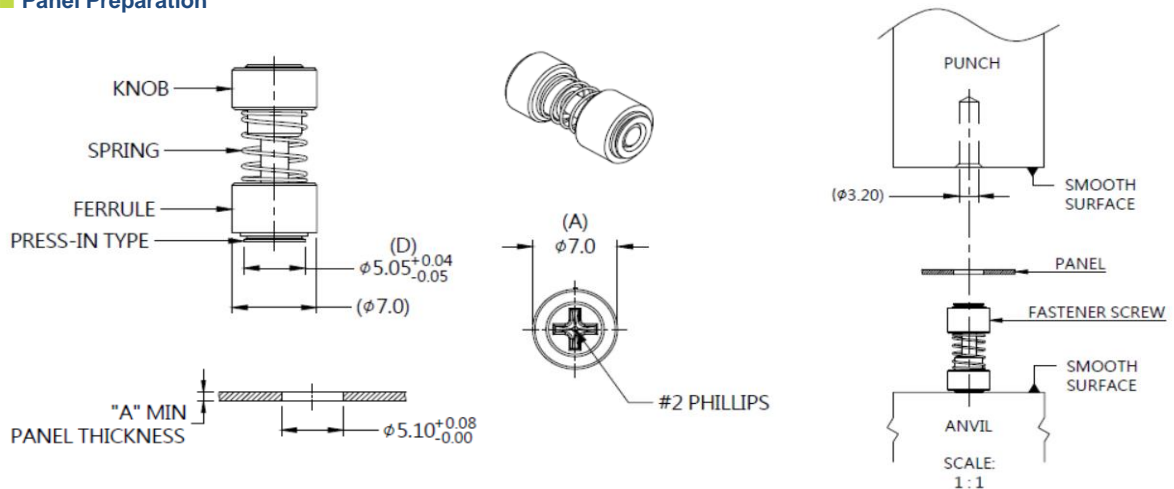
FASTENER SCREW Ø7.0 mm MINI PLASTIC KNOB Patented.



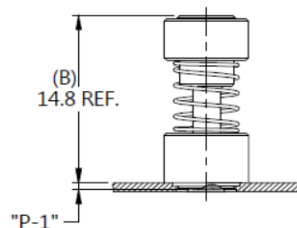
Material and Finish

KNOB:
PLASTIC : PANTONE 659C (BULE).
SCREW:
CARBON STEEL , ZINC FINISH.
SPRING:
300 SERIES STAINLESS STEEL , NATURAL FINISH.
FERRULE:
CARBON STEEL , ZINC FINISH.

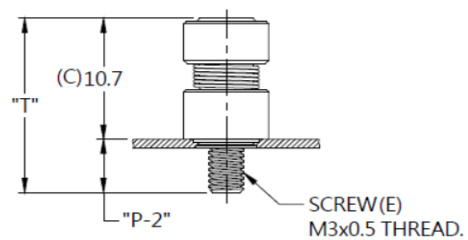
■ Panel Preparation



PANEL PREPARATION



UNFASTENED



FASTENED

■ Knob Color Options



■ Dimensions (mm)

SCREW LENGTH "T"	SCREW PROJECTION		PANEL THICKNESS		DIMENSINOS	
	"P-1"	"P-2"	"A" MIN	"A" MAX	" L "	" B "
15.4	0.6	4.7	0.8	~	~	~