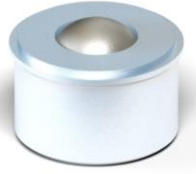


## ROLLER SERIES

- Ball roller installs below board to accelerate thrust / reduce friction force.
- Balls roll interaction enhances moving force.
- Universal directional is ideal to add extra boost for the heavy sliding tray.
- Purposes to speed up the pulling speed of an overweight server storage tray.
- Energy saving, effort saving, time saving.

### BALL ROLLER Type II- Below Board type low profile

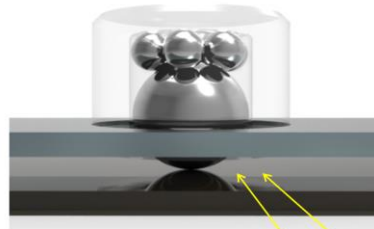
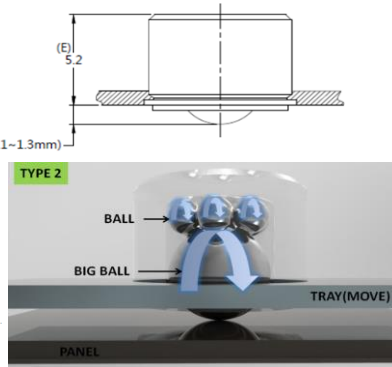
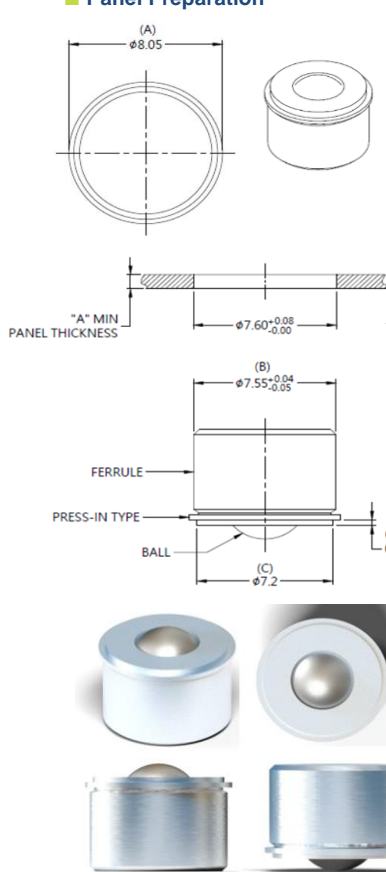
Patented.



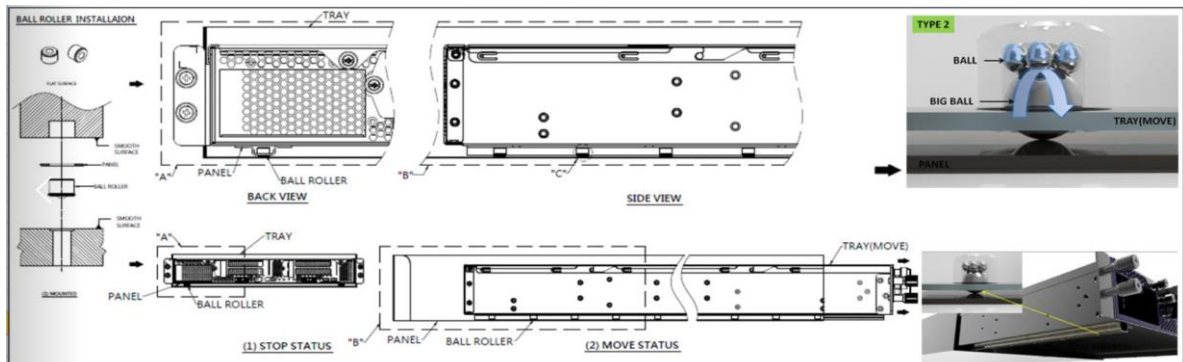
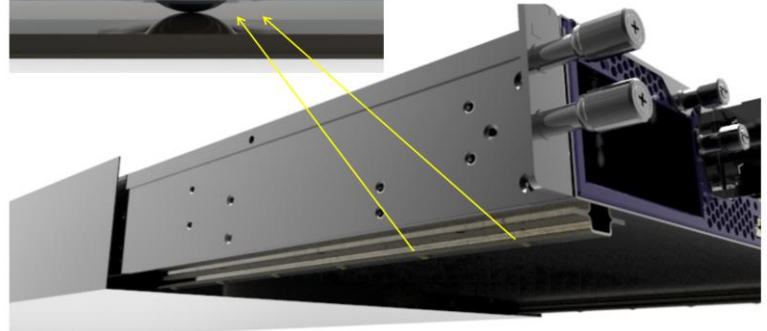
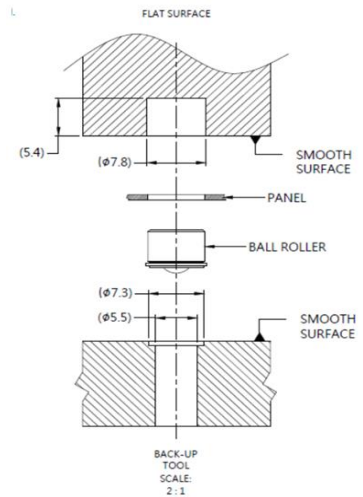
#### Material and Finish

**FERRULE :**  
CARBON STEEL , ZINC FINISH.  
**BALL :**  
300 SERIES STAINLESS STEEL , NATURAL FINISH.  
**BALL ROLLER :**  
LOAD CAPACITY 5 kgf

#### ■ Panel Preparation



#### ■ Installation



#### ■ Dimensions (mm)

LENGTH "T"	PROJECTION		PANEL THICKNESS		DIMENSINOS	
	"P-1"	"P-2"	"A" MIN	"A" MAX	" L "	" B "
			0.8	~		

Copyright © Since 2007-2018 Fivetech Technology Inc. All Right Reserved.