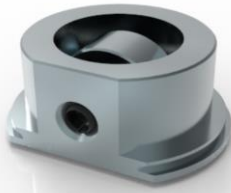


## Wheel Roller

- Wheel Rollers installed on board, to accelerate the thrust/tensile
- Designate to accelerate the maintenance efficiency performance
- Energy saving, effort saving, time efficiency

### Wheel Roller- on board type

Patented.

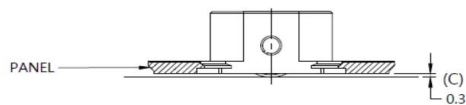
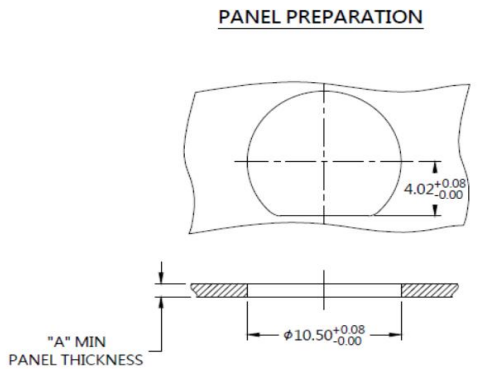


### Material and Finish

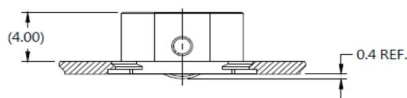
**Ferrule :**  
CARBON STEEL, ZINC FINISH.  
**SPRING PIN :**  
CARBON STEEL , BLACK OXIDE FINISH.  
**Roller :**  
CARBON STEEL , NICKEL FINISH .  
**WHEEL ROLLER : LOAD CAPACITY**  
4.5 kg .

### Panel Preparation

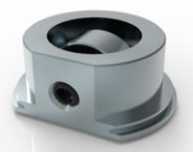
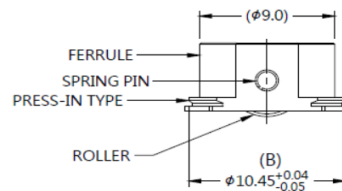
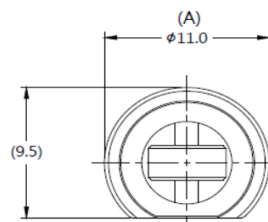
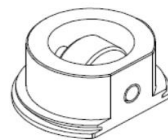
#### PANEL PREPARATION



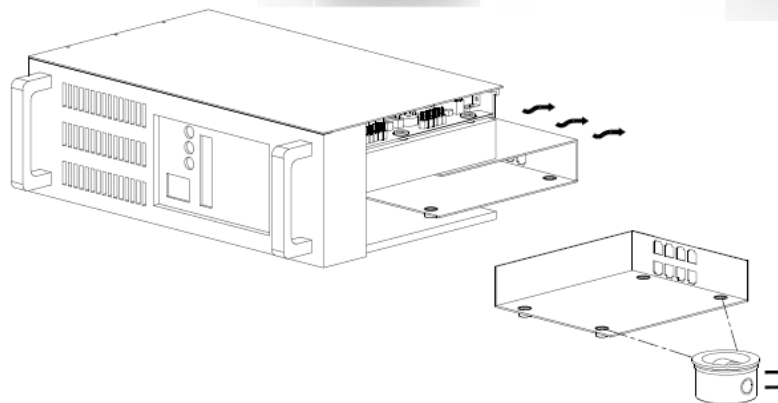
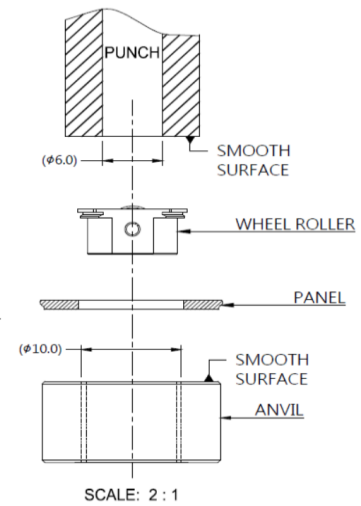
#### LOAD CAPACITY (AFTER)



#### LOAD CAPACITY (BEFORE)



### Installation Style



### Dimensions(mm)

SCREW LENGTH "T"	SCREW PROJECTION		PANEL THICKNESS		DIMENSINOS	
	"P-1"	"P-2"	"A" MIN	"A" MAX	" L "	" B "
~	~	~	1.0	2.6	~	~