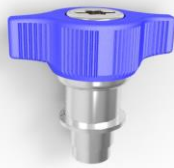


CAPTIVE SCREW

- Fast positioning device, does not require extra tool.
- Wing type knob designed for easy hand operation.
- Spring-ejected.
- Color management is available as required by customers.
- The size of device and assembly method could be customized.

27 SERIES Wing Knob (large)

Patented.



Material and Finish

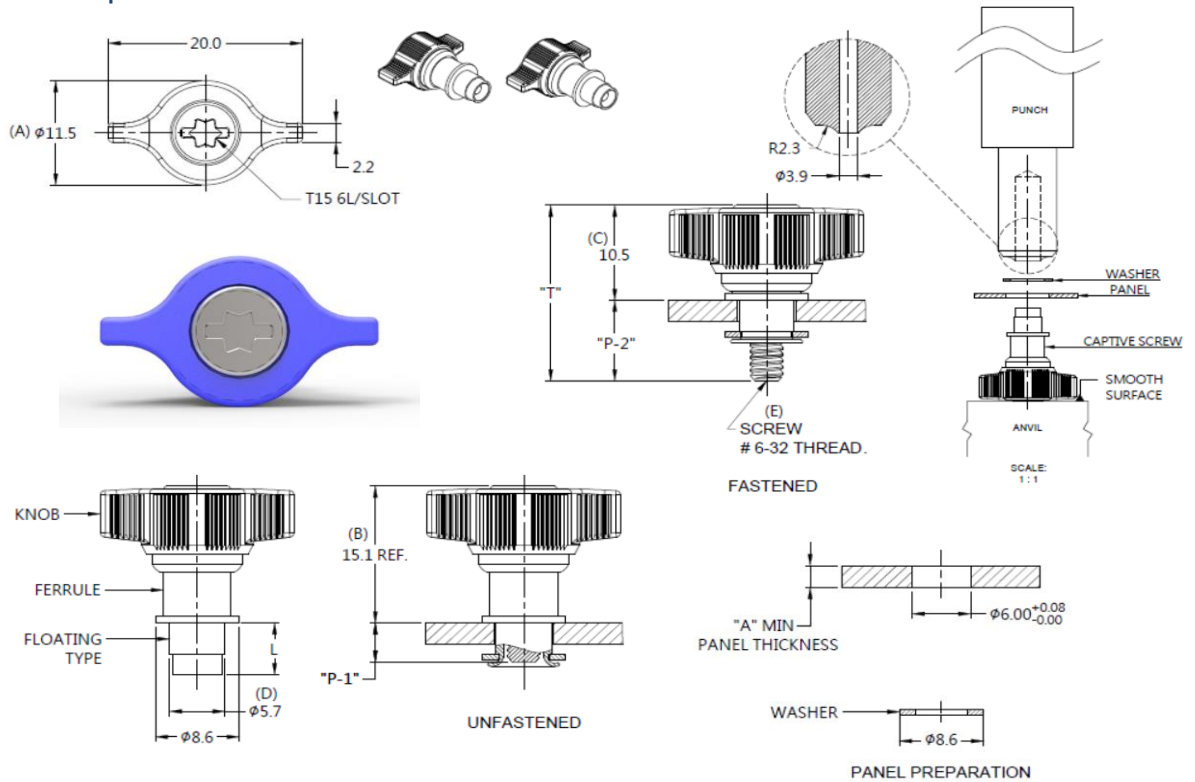
Knob: 6000 SERIES ALUMINUM , PLASTIC: TOUCH POINT BLUE.

Screw: 400 SERIES STAINLESS STEEL, NATURAL FINISH.

Spring: 300 SERIES STAINLESS STEEL, NATURAL FINISH.

Ferrule: 6000 SERIES ALUMINUM, NATURAL FINISH.

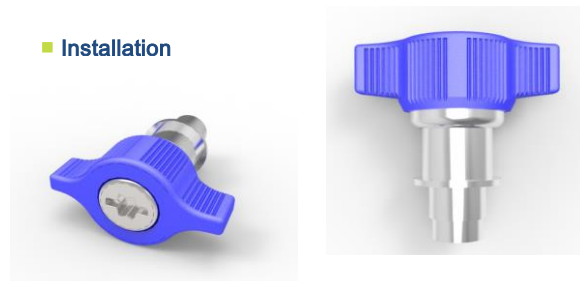
Panel Preparation



Knob Color Options



Installation



Dimensions (mm)

SCREW LENGTH "T"	SCREW PROJECTION		PANEL THICKNESS		DIMENSINOS	
	"P-1"	"P-2"	"A" MIN	"A" MAX	" L "	" B "
19.4	4.3	8.9	2.4	3.3	5.7	

Copyright© Since 2007-2019 Fivetech Technology Inc. All Right Reserved.