



PLUNGER

- Efficient performance in assembly, decomposition, and repair
- Fast installation and removal for sliding module.
- Color management for plastic is available as required by customers.

POSITIONING PLUNGER $\phi 13\text{mm}$ Patented.



Material and Finish

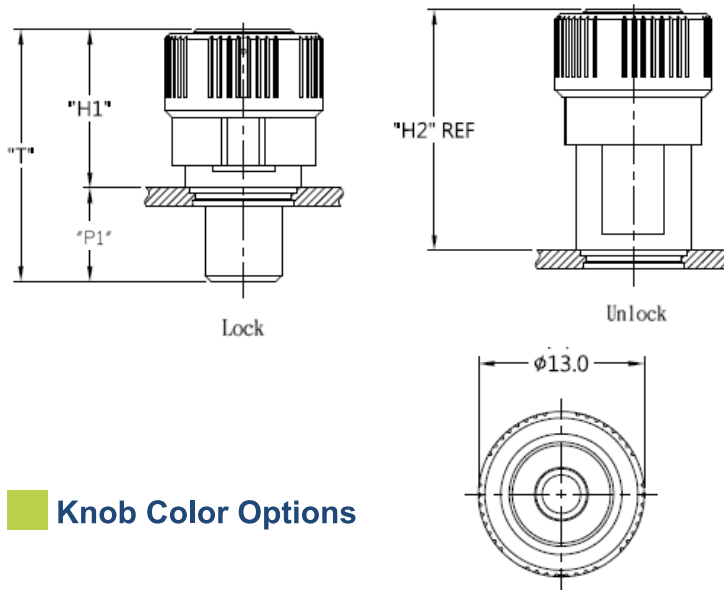
Knob :
Carbon Steel, Zinc Finish, Plastic

Pin :
Carbon Steel, Zinc Finish.

Spring :
300 Series Stainless Steel, Natural Finish.

Ferrule :
Carbon Steel, Zinc Finish.

Projection

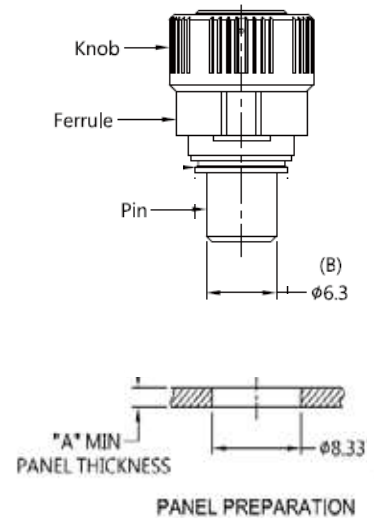


Knob Color Options

Color Options



Installation Style



Dimensions(mm)

PANEL THICKNESS		T	H-1	H-2	P-1
A MIN	A MAX				
1.5	-	20.7	13.0	20	7.7



PLUNGER

- Efficient performance in assembly, decomposition, and repair.
- Fast installation and removal for sliding module.
- Color management for plastic is available as required by customers.

MINI POSITIONING PLUNGER $\phi 10\text{mm}$ Patented.



Material and Finish

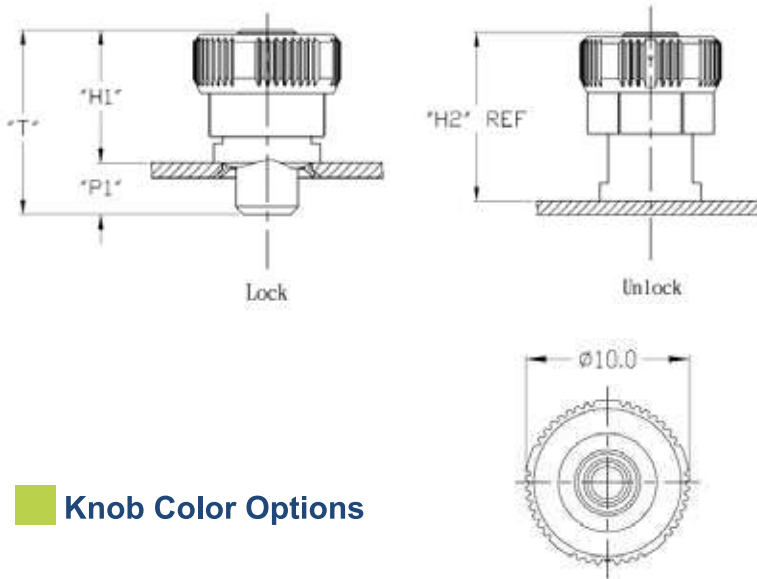
Knob :
Carbon Steel, Zinc Finish, Plastic

Pin :
Carbon Steel, Zinc Finish.

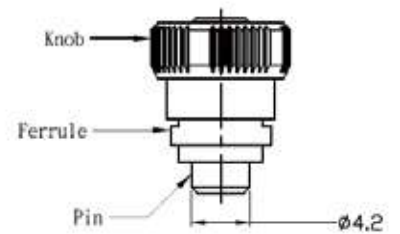
Spring :
300 Series Stainless Steel, Natural Finish.

Ferrule :
Carbon Steel, Zinc Finish.

Projection

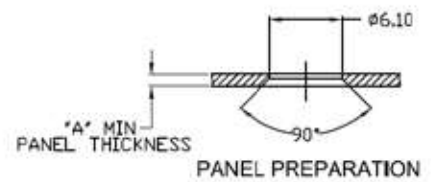


Installation Style



Knob Color Options

Color Options



Dimensions(mm)

PANEL THICKNESS		T	H-1	H-2	P-1
A MIN	A MAX				
1.0	-	12.5	9.5	12.0	3.5

- Efficient performance in assembly, decomposition, and repair
- Forms one-piece with the main structure, hand pull could achieve the positioning
- Pull and turn for locking, easy to operate

101 SERIES PRESS-IN Patented.



Material and Finish

Stud:

Steel, zinc plate, chromate plus sealer.

Pincap:

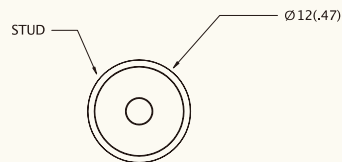
Steel, zinc plate, chromate plus sealer.

Spring:

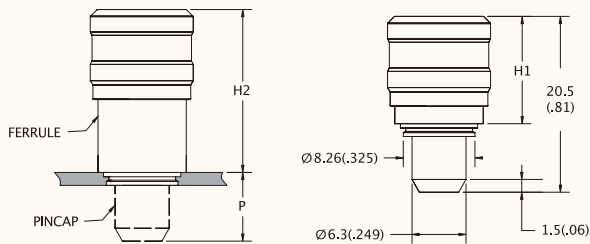
300 series stainless steel.

Ferrule:

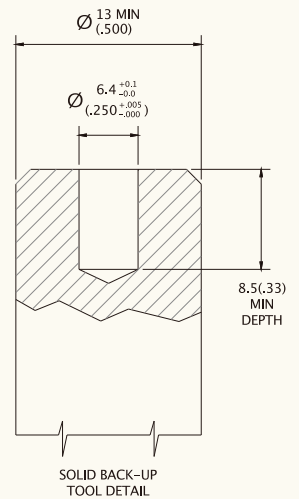
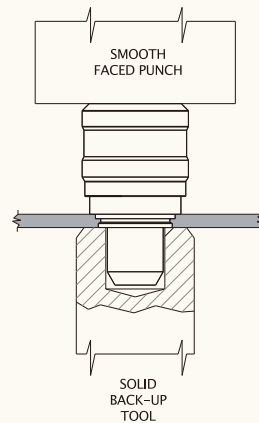
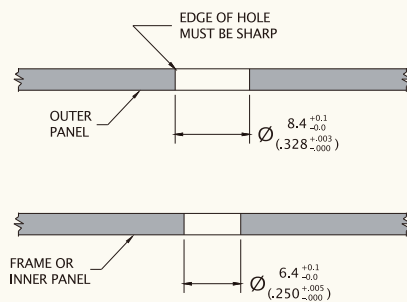
Hardened carbon steel, nickel plated finish.



- Press with approximately 13,400 N (3000 lbf.) for steel panels until ferrule sits flush with panel.



Installation



(Customer Supplied)

Dimensions

mm

PANEL THICKNESS		P	KNOB STYLE	PART NUMBER		H1 CLOSED	H2 OPEN
MIN	MAX			Hold Open	Without Hold Open		
1.52	3.81	8.2	BRIGHT	57-101	57-102	12.5 (.49)	19.3 (.76)

- Efficient performance in assembly, decomposition, and repair
- Forms one-piece with main structure, hand pull could achieve the positioning
- Hold open feature available. Pull and turn for locking, easy to operate

201 SERIES FLARE-IN Patented.



Material and Finish

Stud:

Steel, zinc plate, chromate plus sealer.

Pin cap:

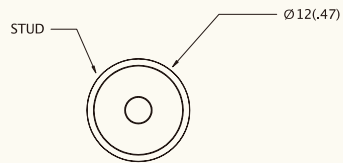
Steel, zinc plate, chromate plus sealer.

Spring:

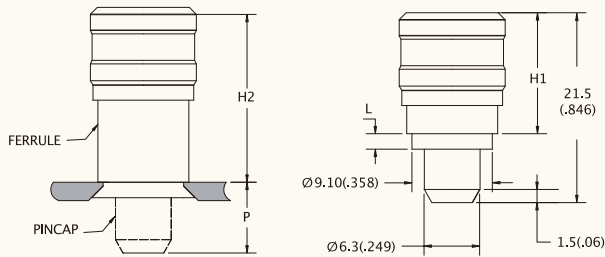
300 series stainless steel.

Ferrule:

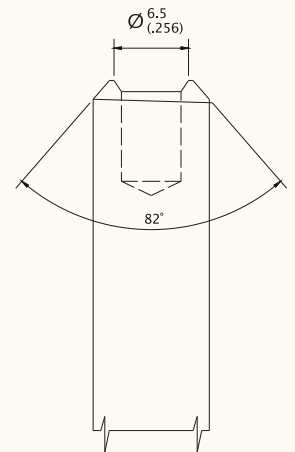
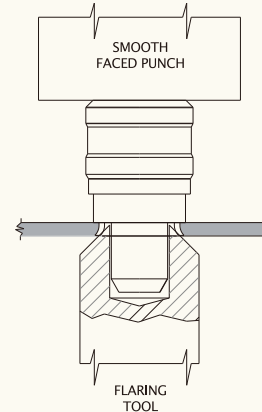
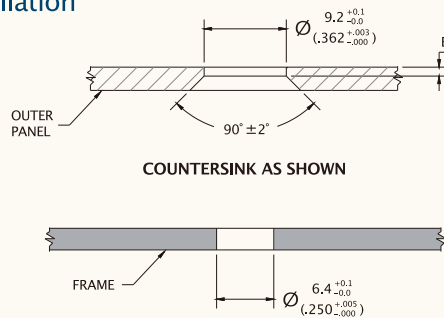
6000 series aluminum natural.



- Press with approximately 2,500 N (562 lbf.) until ferrule is flared into the countersink in the panel.



Installation



Dimensions

mm

PANEL THICKNESS		P	KNOB STYLE	PART NUMBER		H1 CLOSED	H2 OPEN	B ±0.13 (.005)	L
MIN	MAX			Hold Open	Without Hold Open				
1.52 (0.06)	3.81 (0.15)	7.8 (0.31)	BRIGHT	57-201	57-202	13.7 (.54)	19.8 (.78)	0.40 (.016)	1.78 (.07)

- Efficient performance in assembly,decomposition,and repair
- Forms one-piece with main structure,hand pull could achieve the positioning
- Hold open feature available. Pull and turn for locking, easy to operate
- Small, compact design for limited space

301 SERIES PRESS-IN Patented.



Material and Finish

Stud:

Hardened carbon steel, zinc finish.

Pincap:

Hardened carbon steel, zinc finish.

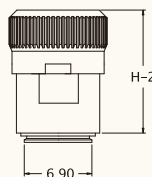
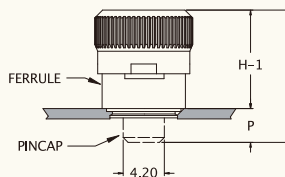
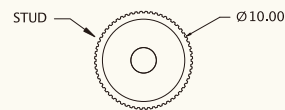
Spring:

300 series stainless steel.

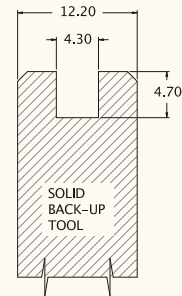
Ferrule:

Hardened carbon steel, nickel finish.

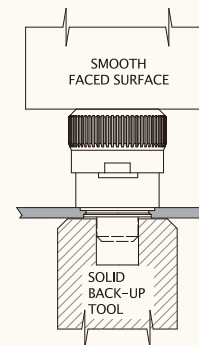
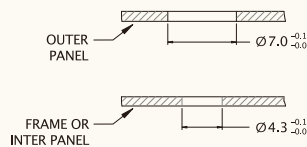
■ Press-in



- Press-in with approximately 10,500 N for steel panels until ferrule sits flush with panel.



■ Installation



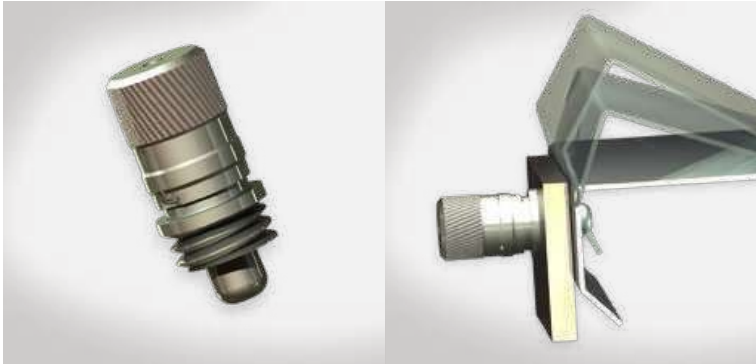
■ Dimensions

mm

PANEL THICKNESS		P	KNOB STYLE	PART NUMBER	H-1 CLOSED	H-2 OPEN	L
MIN	MAX						
1.0	1.5	3.4	Bright	57-301	10.0	12.5	13.5

- Efficient performance in assembly, decomposition, and repair
- Forms one-piece with main structure, hand pull could achieve the positioning
- Hold open feature available. Pull and turn for locking, easy to operate

901 SERIES THREAD-IN Patented.



Material and Finish

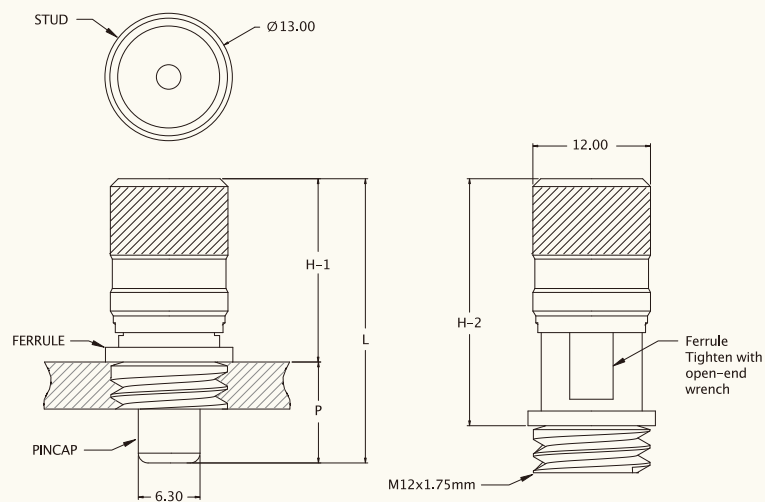
Stud:
Hardened carbon steel, zinc finish.

Pincap:
Hardened carbon steel, zinc finish.

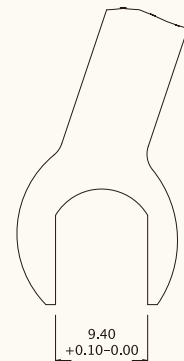
Spring:
300 series stainless steel.

Ferrule:
Hardened carbon steel, zinc finish.

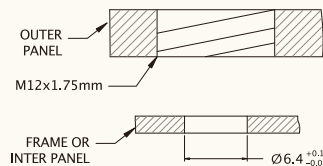
■ Thread-in



Installation Tool



■ Installation



■ Dimensions

mm

PANEL THICKNESS		P	KNOB STYLE	PART NUMBER	H-1 CLOSED	H-2 OPEN	L
MIN	MAX						
4.8	5.5	10.3	Knurled	57-901	18.7	25.2	29