

## PANEL LATCH

- The principle of leverage achieves effortless lifting, allowing easy opening of heavy cover.
- The safety lock secures the panel latch, preventing accidental cover loosening.
- Latch handle provides quick to grip and open operation function.
- Panel Latch applicate all types of server appliances.
- Plastic colors are able to customize.

## Panel Latch

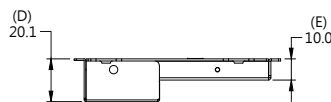
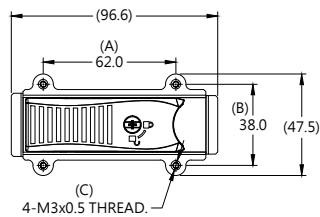
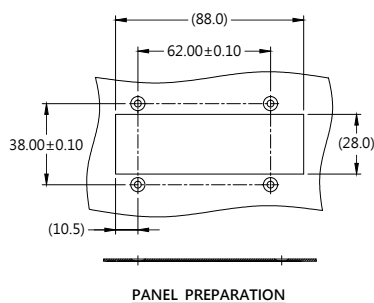
Patented.

### Material and Finish

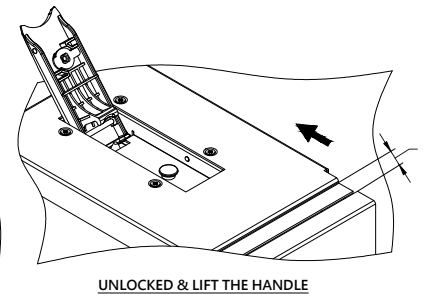
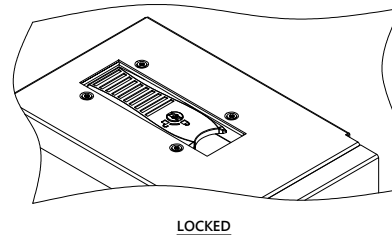
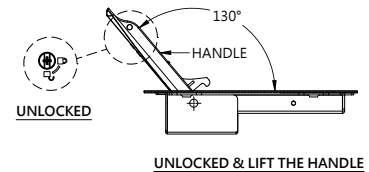
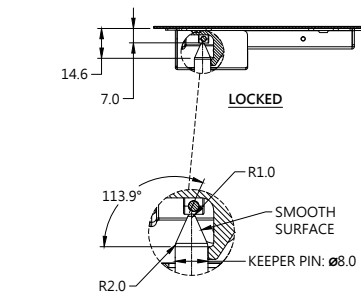
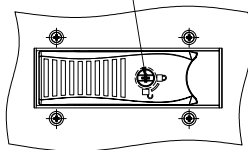
HOUSING : CARBON STEEL  
PIECE : CARBON STEEL  
COVER : CARBON STEEL  
PIN : ALUMINUM  
SPRING : STAINLESS STEEL  
SPOOL : ALUMINUM  
HANDLE : PLASTIC  
RIVET : STAINLESS STEEL



### Panel Preparation

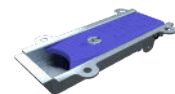
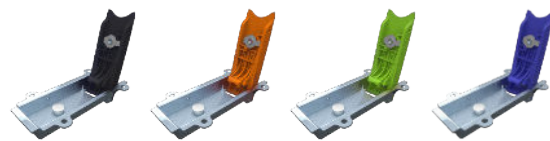


PIN TORQUE : 8.0±15% kgf-cm



### Color Options

01 02 03 04 05 06 07 08 09 00



### Dimensions (mm)

LENGTH "T"	PROJECTION		PANEL THICKNESS		DIMENSIONS	
	"P-1"	"P-2"	"A" MIN	"A" MAX	" L "	" B "
~	~	~	~	~	~	~