

MINI HEAD LOCK

Tool-less, quick assembling, efficient in performance.

Forms one-piece with main structure.

Hand pull could achieve the position and unleash could rebound.

MINI HEAD LOCK (Press-in Type) Patented.



Material and Finish

Knob:

Plastic

Pin :

300 Series Stainless Steel, Natural Finish.

Spring :

300 Series Stainless Steel, Natural Finish.

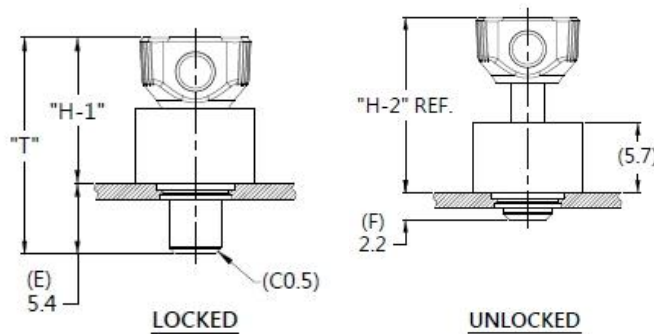
Rivet:

300 Series Stainless Steel, Natural Finish.

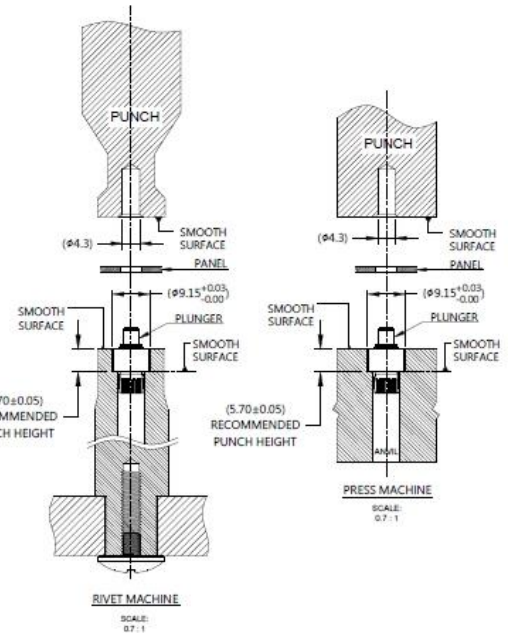
Ferrule :

Carbon Steel, Zinc Finish.

Knob High and Screw Projection



Installation Style



Knob Color Options



Dimensions (mm)

P/N	LENGTH "T"	PROJECTION		PANEL THICKNESS	
		H-1	H-2	"A" MIN	"A" MAX
57-122-165-01-5	16.5	11.1	14.3	1.2	~