

M.2 BOARD LATCH

Quick assembly (Time-saving).

Simply push to lock/unlock the M.2 card (Effort-saving).

Vertical blockage structure, full reliability.

Intuitive design, user-friendly.

M.2 BOARD LATCH (Snap-in Type) Patented.



Material and Finish

Cover :
Plastic

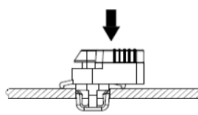
Pin/Spring :
300 Series Stainless Steel, Natural Finish.

Base :
Plastic

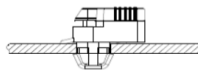
Panel Preparation



(1) PREPARATION



(2) POSITIONING

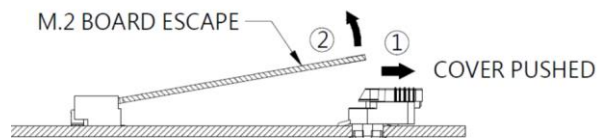


(3) SNAP IN

M.2 Installation



FASTENED



UNFASTENED

Color Options

