

M.2 BOARD LATCH

Quick assembly (Time-saving).

Simply push to lock/unlock the M.2 card (Effort-saving).

Vertical blockage structure, full reliability.

Intuitive design, user-friendly.

M.2 BOARD LATCH (Screw-in Type) Patented.



Material and Finish

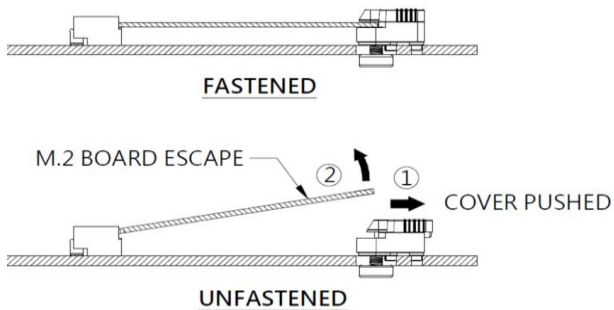
Cover :
Plastic

Pin/Spring :
300 Series Stainless Steel, Natural Finish.

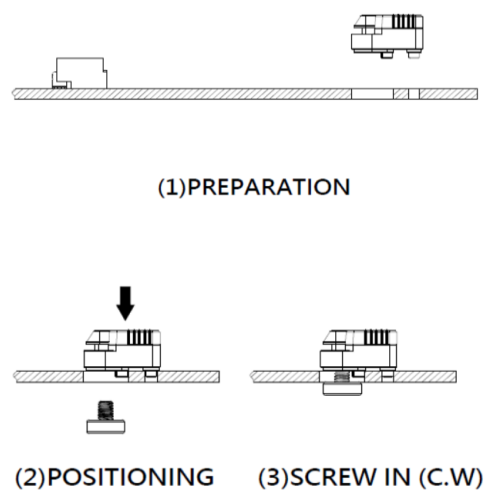
Base :
Plastic

Nut :
Brass, Natural Finish.

Installation



Panel Preparation



Color Options

