

LATCH LOCK

Position / non-position in one second

Intuitive operation, just flip it with your finger

Forms one piece with the main structure

Color can be customized according to needs

LATCH LOCK Patented.



Material and Finish

Wrench :

Plastic

Ferrule :

Carbon Steel, Zinc Finish

Rivet :

300 Series Stainless Steel, Natural Finish

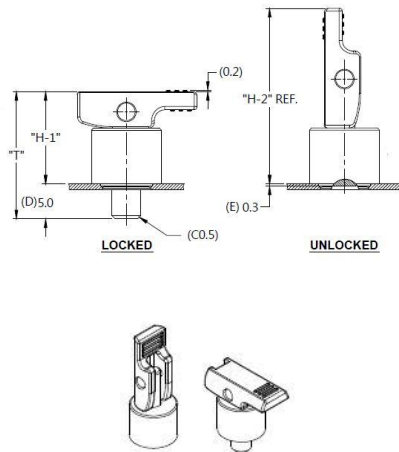
Pin :

Carbon Steel, Zinc Finish

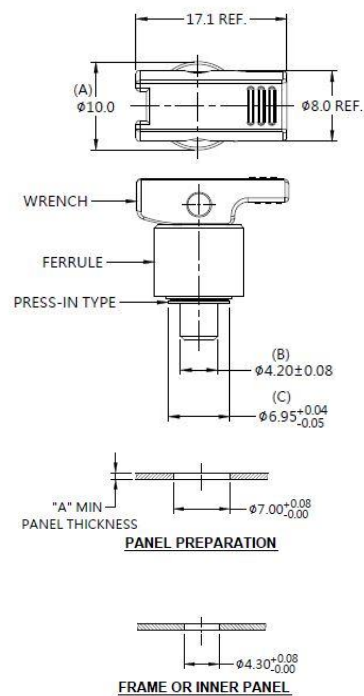
Spring :

300 Series Stainless Steel, Natural Finish

Installation



Panel Preparation



Color Options

Color Options



Dimensions (mm)

LENGTH "T"	PROJECTION		PANEL THICKNESS		DIMENSINOS	
	"H-1"	"H-2"	"A", MIN	"A", MAX	"L"	"B"
18.2	13.2	25.1	0.8	~		

Plunger

- Efficient performance in assembly, decomposition, and repair.
- Forms one-piece with main structure.
- Hand pull could achieve the positioning.

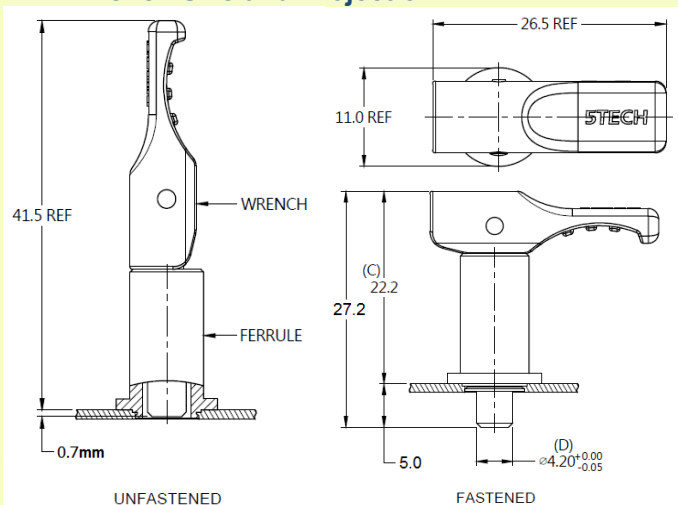
Latch Plunger Patented.



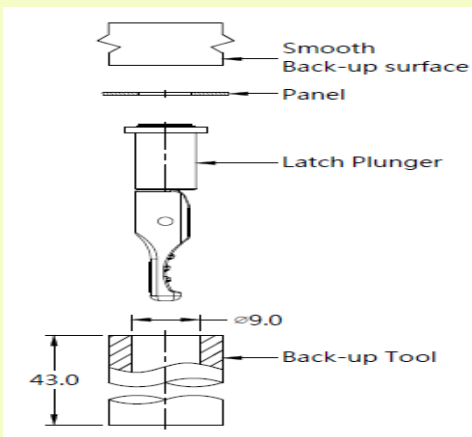
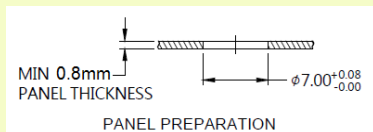
Material and Finish

Wrench :
Plastic
Pin :
300 Series Stainless Steel, Natural Finish.
Ferrule :
Hardened carbon steel, Zinc Finish.
Spring :
300 Series Stainless Steel, Natural Finish.

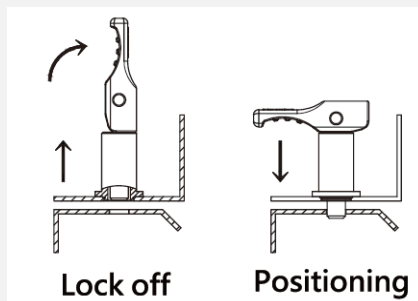
Wrench Size and Projection



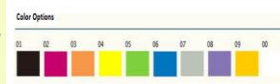
Panel Preparation and Installation



Application



knob color options



Plunger

- Efficient performance in assembly, decomposition, and repair.
- Forms one-piece with main structure.
- Hand pull could achieve the positioning.

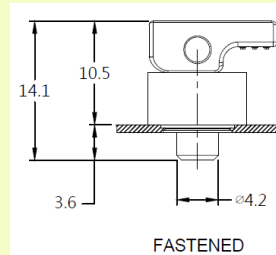
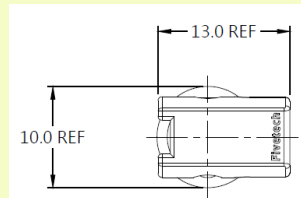
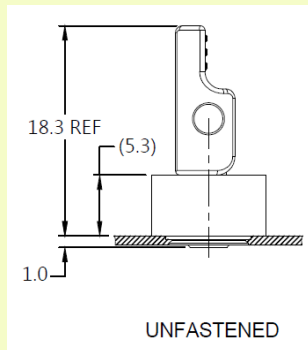
Mini Latch Plunger Patented.



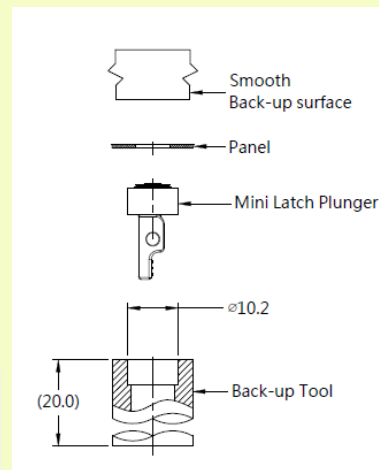
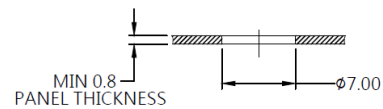
Material and Finish

Wrench :
Plastic.
Rivet :
300 Series Stainless Steel, Natural Finish.
Pin :
Carbon Steel, Zinc Finish.
Ferrule :
Carbon steel, Zinc Finish.
Spring :
300 Series Stainless Steel, Natural Finish.

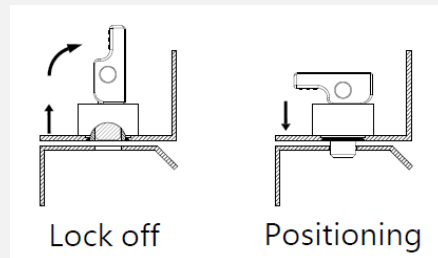
■ Wrench Size and Projection



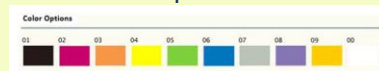
■ Panel Preparation and Installation



■ Application



■ knob color options



PLUNGER

- Efficient performance in assembly, decomposition, and repair.
- Forms one-piece with main structure.
- Hand push could achieve the position and unleash could rebound.

PUSH LOCK Patented.



Material and Finish

Wrench :

Plastic

Rivet :

300 Series Stainless Steel, Natural Finish.

Pin :

Carbon Steel, Zinc Finish.

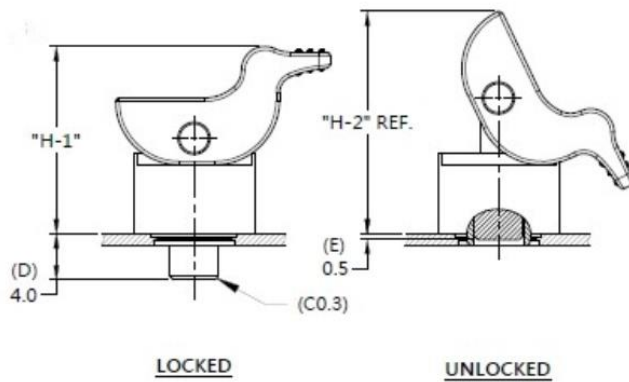
Spring :

300 Series Stainless Steel, Natural Finish.

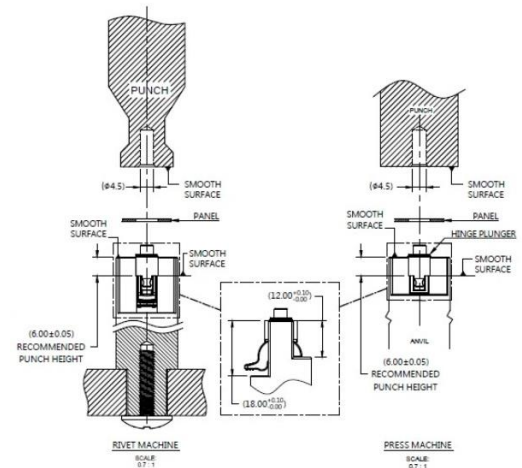
Ferrule :

Carbon Steel, Zinc Finish.

Knob High and Screw Projection



Installation Style



Knob Color Options



Dimensions (mm)

P/N	LENGTH "T"	PROJECTION		PANEL THICKNESS "A"		TYPE
		H1	H2	MIN	MAX	
57-122-203-01-5	20.3	16.3	19.3	1.0	~	PRESS-IN

LATCH LOCK

- Compact size, space-saving.
- Enables quick positioning/unlocking.
- Applicable for both Motherboard & HDD for positioning.
- Designed with plastic wings on both sides for ergonomic operation.
- The plastic pins at the bottom can be adjusted in thickness and length to fit the board holes.
- Customizable color according to client's needs.

Offset Lock

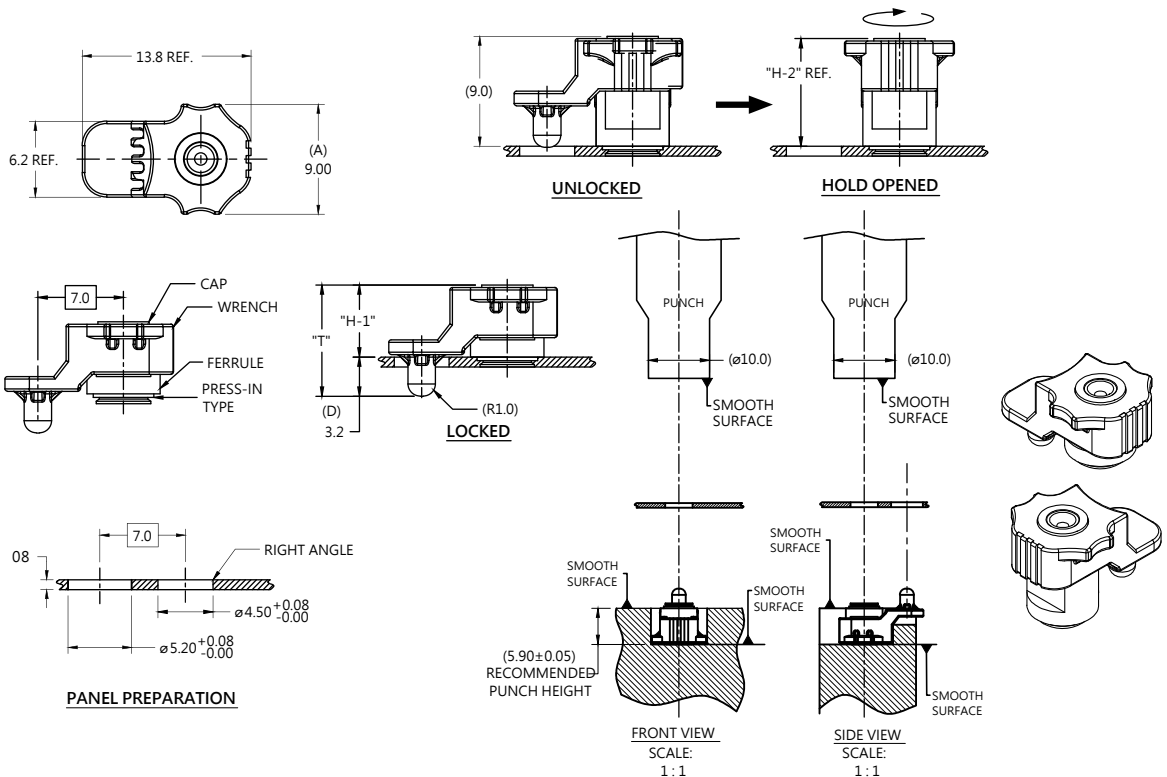
Patented.



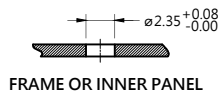
Material and Finish

WRENCH : PLASTIC
CAP : STAINLESS STEEL
RIVET : STAINLESS STEEL
SPRING : TAINLESS STEEL
FERRULE : CARBON STEEL

Panel Preparation



PANEL PREPARATION



FRAME OR INNER PANEL

Color Options

01 02 03 04 05 06 07 08 09 00



Dimensions (mm)

LENGTH "T"	PROJECTION		PANEL THICKNESS		DIMENSIONS	
	"H-1"	"H-2"	"A" MIN	"A" MAX	" L "	" B "
9.1	5.9	8.8	0.8	~		