

LATCH BALL LOCK

- Designed for quick, smooth, one-second positioning as an alternative to screws.
- Paired with Ball Lock for an innovative angled fastening function.
- Ball Lock features a 360-degree flare-in high-strength structure, ensuring high reliability for various applications.
- Latch Lock's highly recognizable and user-friendly design enables easy operation with one finger, even in tight spaces.
- Intuitive and ergonomic operation makes it suitable for a wide range of industries and applications.

Latch ball Lock-Small Type

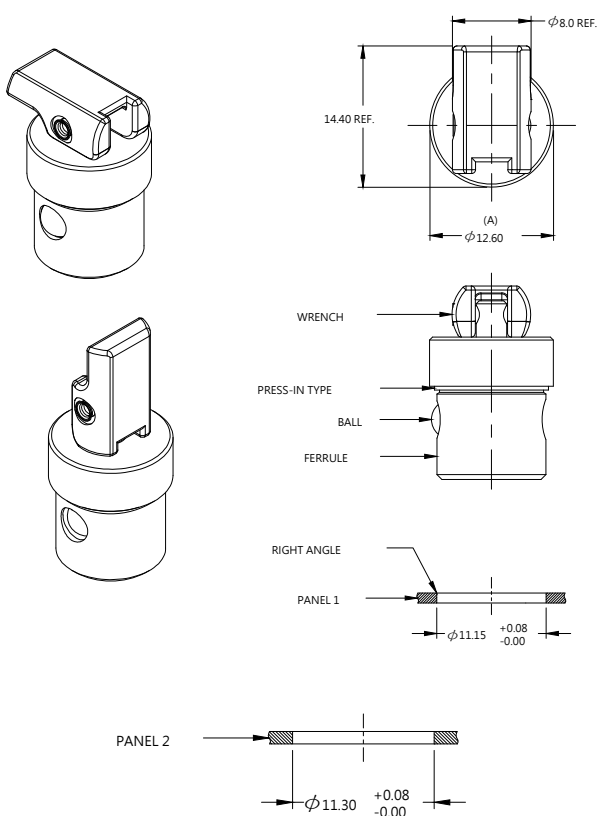
Patented.



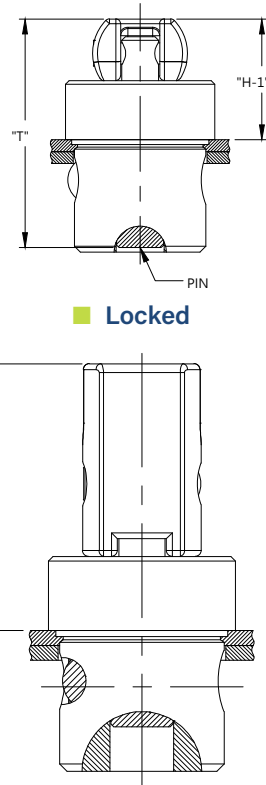
Material and Finish

WRENCH : PLASTIC
 RIVET : 300 SERIES STAINLESS STEEL , NATURAL FINISH.
 PIN : 300 SERIES STAINLESS STEEL , NATURAL FINISH.
 SPRING : 300 SERIES STAINLESS STEEL , NATURAL FINISH.
 BALL : 300 SERIES STAINLESS STEEL , NATURAL FINISH
 FERRULE : 300 SERIES STAINLESS STEEL , NATURAL FINISH.

Panel Preparation



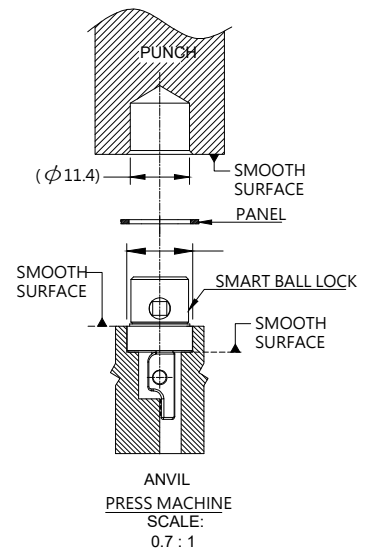
Frame or Inner Panel



Locked

Unlocked

Installation



Dimensions (mm)

LENGTH "T"	PROJECTION		PANEL THICKNESS		DIMENSIONS	
	"H-1"	"H-2"	PANEL1	PANEL2	" L "	" B "
19.3	10.2	18.0	1.0	1.0	~	~