

- Screw ejecting function meets designed function of quick vertical separation
- Able to achieve the energy-saving of splitting connector effectively
- Screw sizes and hand screwing mechanism can be made according to specs required by customers

47 SERIES



Material and Finish

Knob:
6000 Series aluminum.

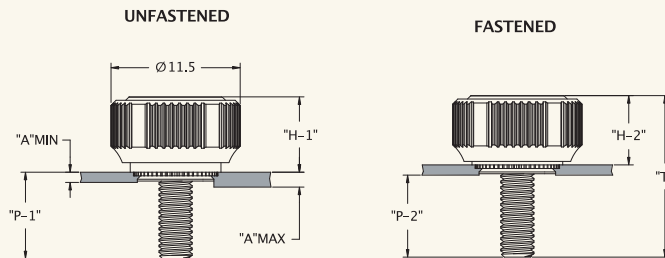
Screw:
Hardened carbon steel, nickel finish.

Ferrule:
Hardened carbon steel, nickel finish.

■ Recess Style



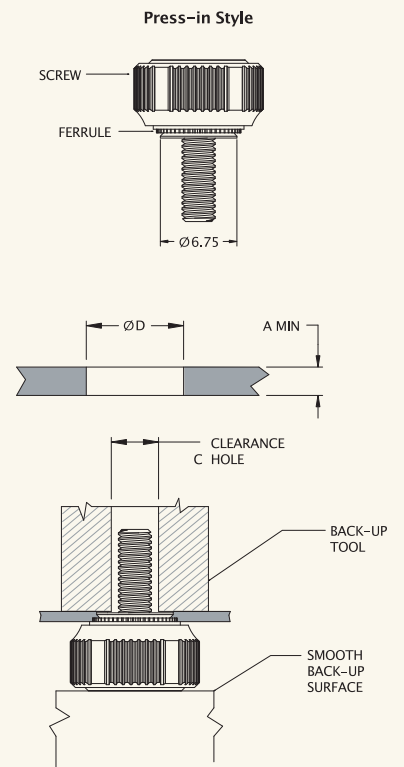
■ Knob Height and Screw Projection



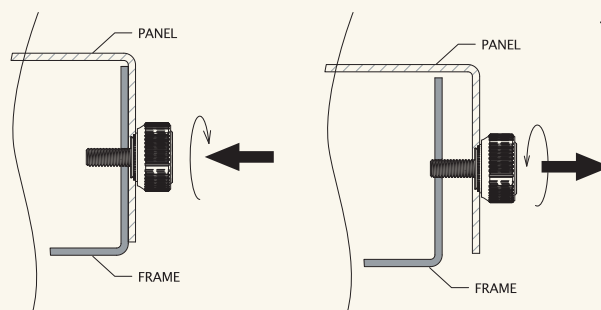
■ Styled Knob Series Panel Preparation and Installation

For Thread Size	ØD	Clearance Hole +0.2 (+.008) -0.1 (-.004)
M3	6.8 ^{+0.08} ₋₀ (.268 ^{+0.003} _{-.000})	4.0 (.157)

■ Installation Style



■ Application



mm

THREAD	OUTER PANEL DIMENSIONS		SCREW PROJECTION			KNOB HEIGHT		TOTAL FLOAT	PART NUMBER		
	A MIN	A MAX	T	P-1	P-2	H-1	H-2		Phillips Recess	6L Recess	6L/Slot Recess
M3	0.80	~	10.5	4.0	4.4	6.5	6.1	0.4	47-112-210	47-112-310	47-112-410
			13.5	7.0	7.4				47-112-220	47-112-320	47-112-420

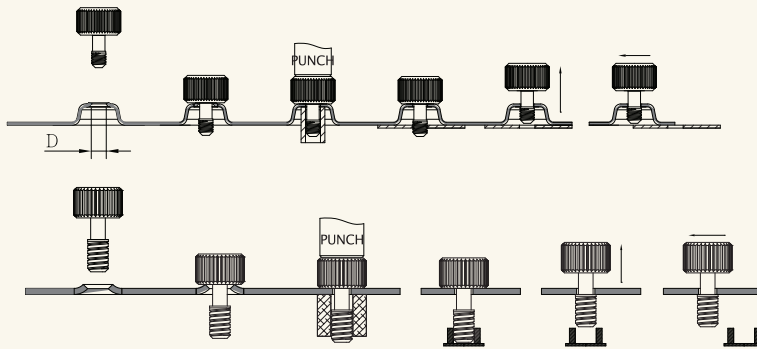
- Simply assemble to punch screw into panel.
- Special design to avoid screw stuck when reverse.
- Screw ejecting function meets designed function of quick vertical separation.
- Able to achieve the energy-saving of splitting connector effectively
- Suitable for various thickness & material of panel.

90 SERIES

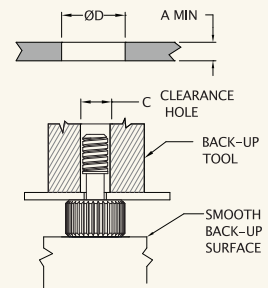


Material and Finish

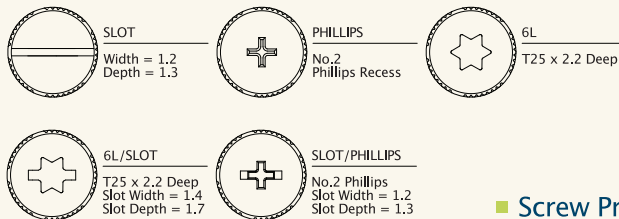
Screw:
300 Series stainless steel.
Hardened carbon steel, zinc finish.



■ Styled Knob Series Panel Preparation and Installation

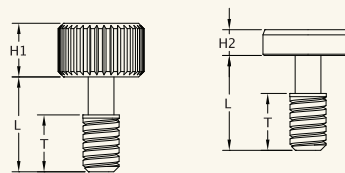


■ Recess Style



For Thread Size	ØD	Clearance Hole +0.2 (+.008) -0.1 (-.004)
M3	3.0 ^{+0.08} ₋₀ (.118 ^{+0.003} _{-.000})	3.2 (.125)
#4-40		
M4	4.0 ^{+0.08} ₋₀ (.157 ^{+0.003} _{-.000})	4.4 (.173)
#6-32		

■ Screw Projection



■ Dimensions

mm

THREAD	OUTER PANEL DIMENSIONS		SCREW PROJECTION								TOTAL FLOAT	PART NUMBER				
	A MIN	A MAX	L	T	H-1	H-2						Solt Recess	Phillips Recess	6L Recess	6L/Slot Recess	Slot/Phillips Recess
M3	1.0	~	6	10	12	3.7	7.7	9.7	7.3	2	0.5	90-110	90-120	90-130	90-140	90-150
#4-40												90-210	90-220	90-230	90-240	90-250
M4	1.0	~	4	6	10	4.1	7.2	10.4	7.3	2	0.5	90-310	90-320	90-330	90-340	90-350
#6-32												90-410	90-420	90-430	90-440	90-450