

HINGE

- Captive Hinge design, tool-free installation, easy assembly.
- Removable and re-install design, easy to remove door-leaf.
- Time efficiency, effort saving, space saving, convenient during
- Can repair rack door-leaf as component if any damage. no need to replace whole rack/encloser.

CAPTIVE HINGE

Patented.



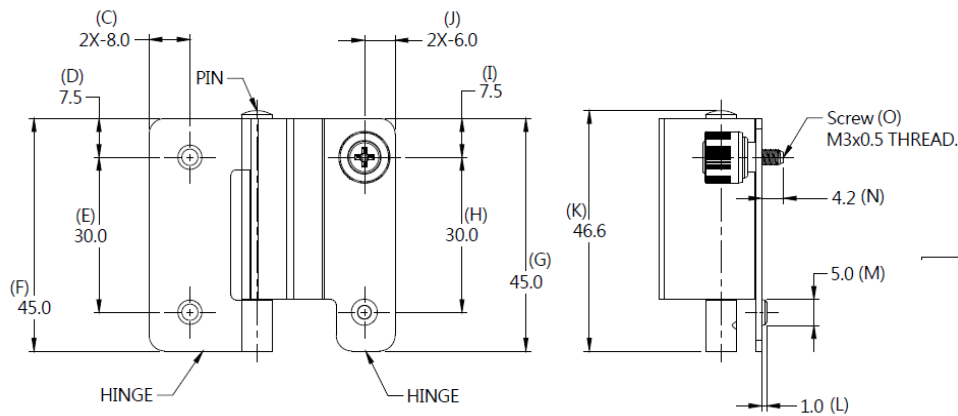
Material and Finish

HINGE : 300 SERIES STAINLESS STEEL, NATURAL FINISH

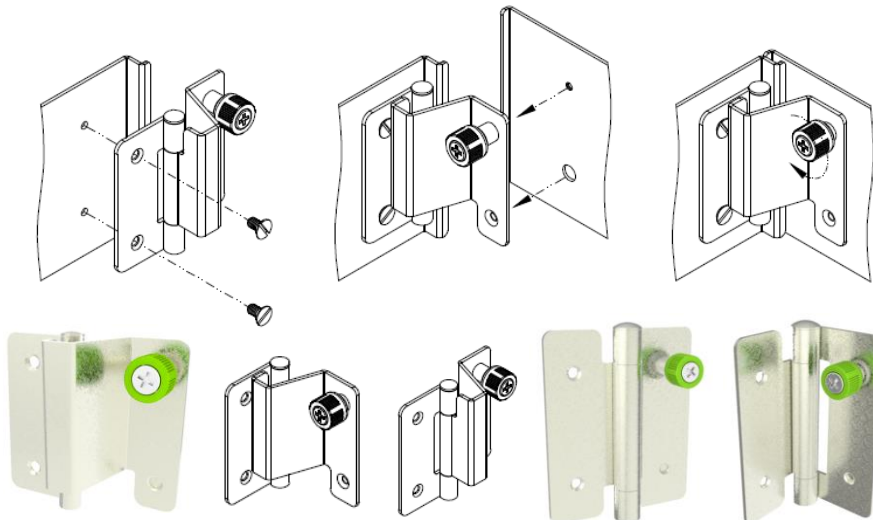
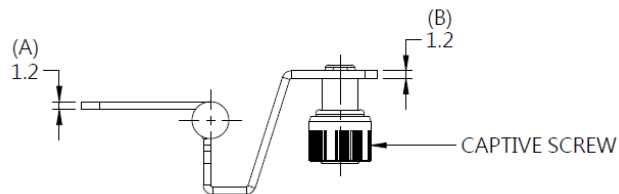
PIN : 300 SERIES STAINLESS STEEL, NATURAL FINISH

CAPTIVE SCREW : Fivetech P/N 27-121-201-5

■ Dimensions(mm)



■ Installation Style



HINGE

- Slide Hinge design, tool-free installation, easy assembly.
- Removable and re-install design, easy to remove door-leaf.
- Time efficiency, effort saving, space saving, convenient during shipping.
- Can repair rack door-leaf as component if any damageno. no need to replace whole rack/encloser.

SLIDE HINGE

Patented.

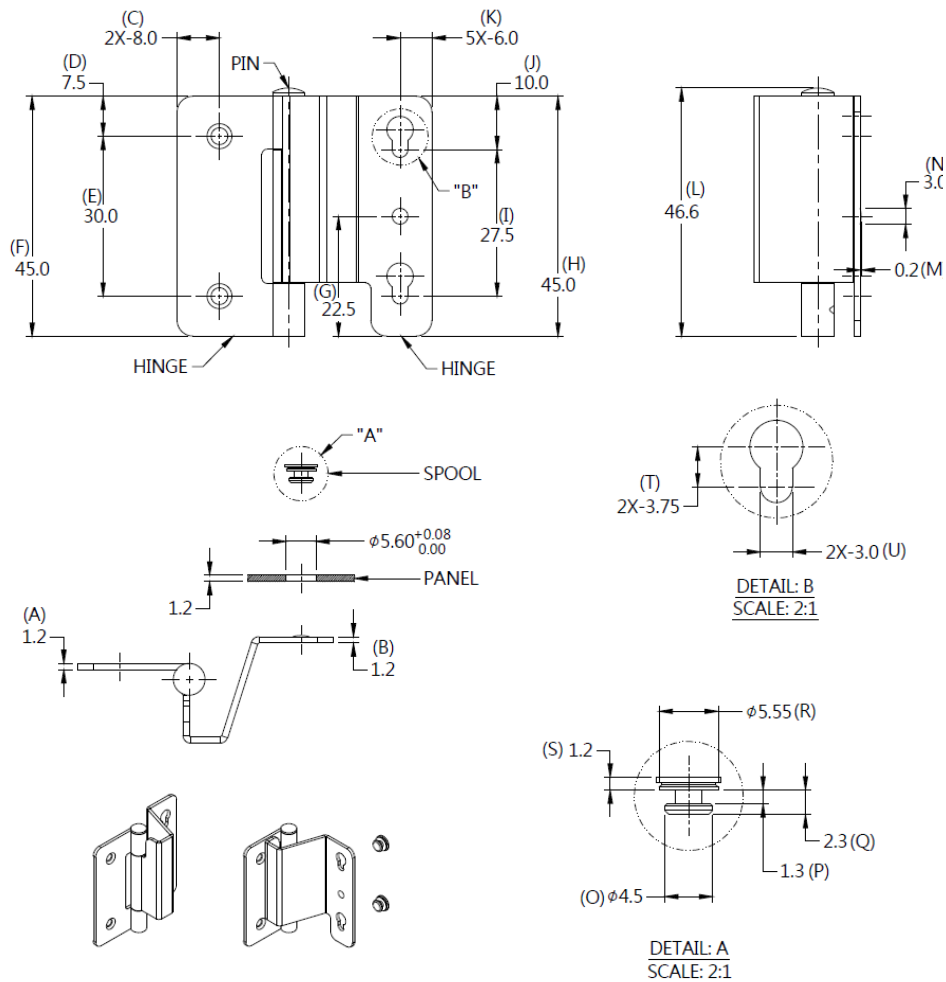
Material and Finish

HINGE : 300 SERIES STAINLESS STEEL, NATURAL FINISH

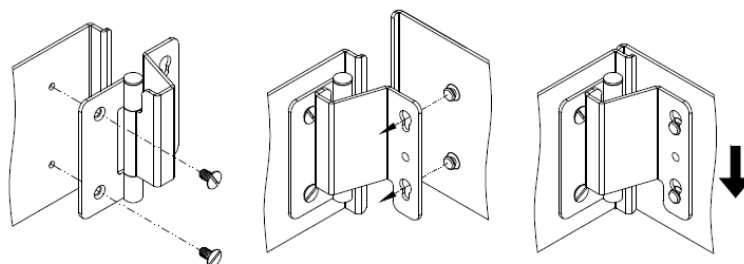
PIN : 300 SERIES STAINLESS STEEL, NATURAL FINISH

SPOOL : CARBON STEEL, ZINC FINISH

■ Dimensions(mm)



■ Installation Style



HINGE

- Multi-stage positioning function, increase the design diversity
- Smooth rotation with excellent operating feeling
- Humanized operation and high reliability
- Automatic machine assembly, high production efficiency

Rotate Hinge Patented.



Material and Finish

Washer :

300 Series Stainless Steel, Natural Finish

Pin/Rivet :

300 Series Stainless Steel, Natural Finish

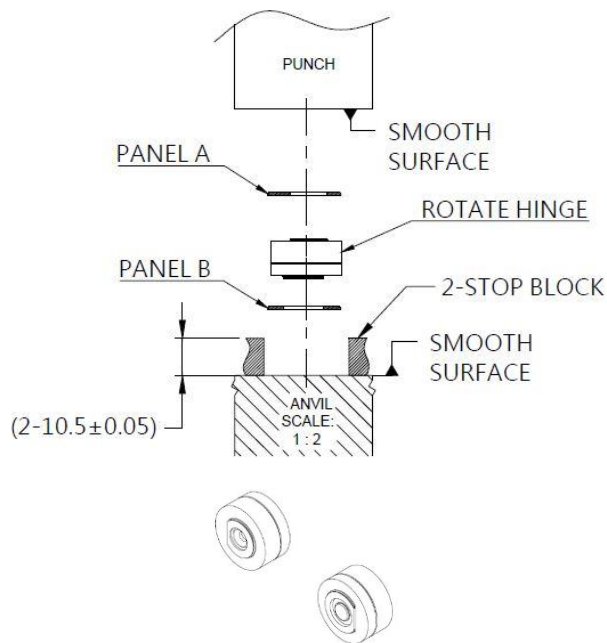
Ferrule1/Ferrule2 :

300 Series Stainless Steel, Natural Finish

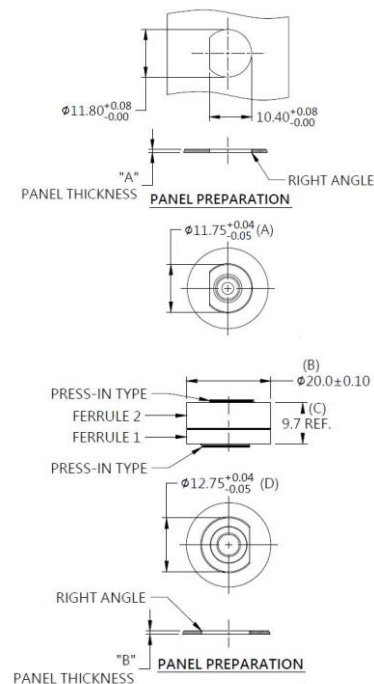
Spring :

300 Series Stainless Steel, Natural Finish

Installation



Panel Preparation



Dimensions (mm)

LENGTH "T"	PROJECTION		PANEL THICKNESS		DIMENSINOS	
	"H-1"	"H-2"	"A"	"B"	" L "	" B "
~	~	~	0.8	0.8	~	~