

## HINGE HANDLE

- A fully automated production line saves labor costs and improves production efficiency
- Folded when stored, saves space
- Plastic-made handle can improve heat resistance and electrical resistance
- Color, pitch, length, size, and other specifications can be customized

## Plastic Hinge Handle- Press-in Patented.



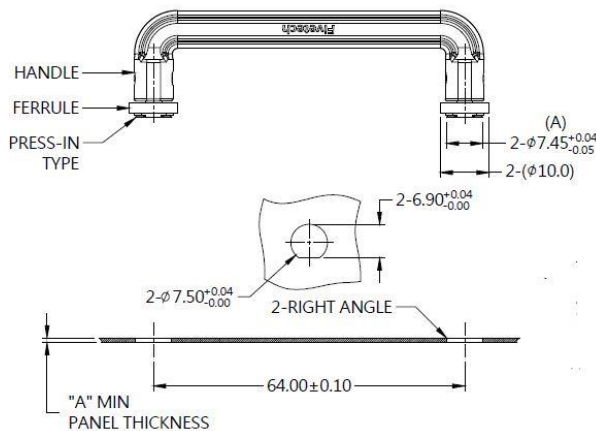
### Material and Finish

**Handle :**  
Plastic

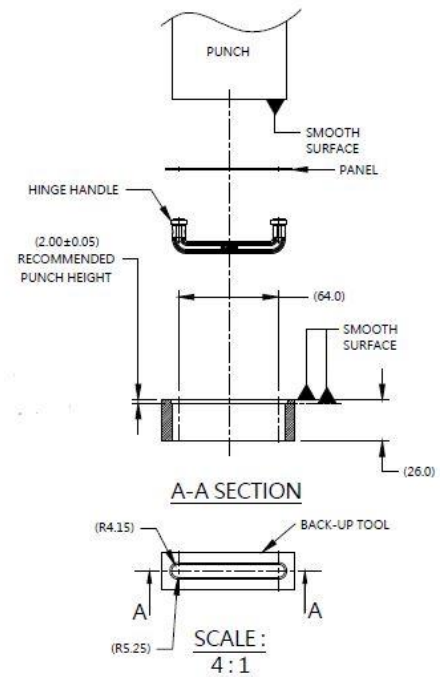
**Rivet:**  
300 Series Stainless Steel, Natural Finish

**Ferrule :**  
Carbon Steel, Zinc Finish

### Panel Preparation



### Installation



### Color Options

Color Options



### Dimensions (mm)

HANDLE LENGTH "T"	HANDLE PROJECTION		PANEL THICKNESS		DIMENSINOS	
	"P-1"	"P-2"	"A" MIN	"A" MAX	" L "	" B "
			1.0	~		

## HINGE HANDLE

- A fully automated production line saves labor costs and improves production efficiency
- Folded when stored, saves space
- Plastic-made handle can improve heat resistance and electrical resistance
- Color, pitch, length, size, and other specifications can be customized

## Plastic Hinge Handle- Flare-in Patented.



## Material and Finish

**Handle :**  
Plastic

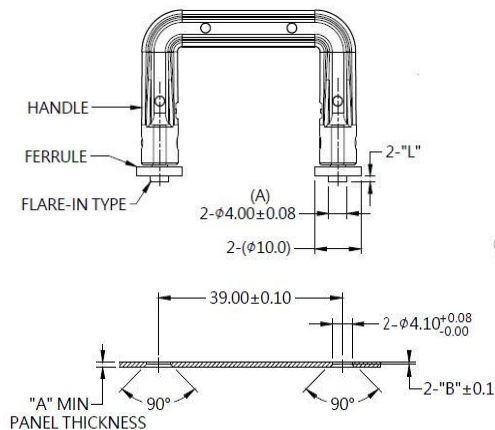
**Rivet:**

300 Series Stainless Steel, Natural Finish

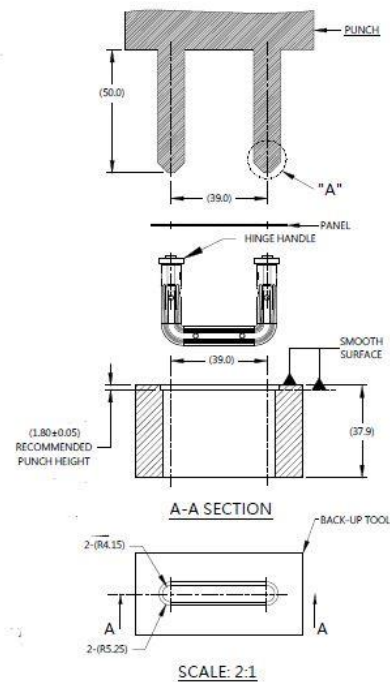
**Ferrule :**

Carbon Steel, Zinc Finish

## Panel Preparation



## Installation



## Color Options

### Color Options



### Dimensions (mm)

LENGTH " T "	HANDLE PROJECTION		PANEL THICKNESS		DIMENSINOS	
	" P-1 "	" P-2 "	" A " MIN	" A " MAX	" L "	" B "
			1.0	1.2	1.2	0.4

## HINGE HANDLE

- A fully automated production line saves labor costs and improves production efficiency
- Folded when stored, saves space
- Plastic-made handle can improve heat resistance and electrical resistance
- Color, pitch, length, size, and other specifications can be customized

## Plastic Hinge Handle- Floating Patented.



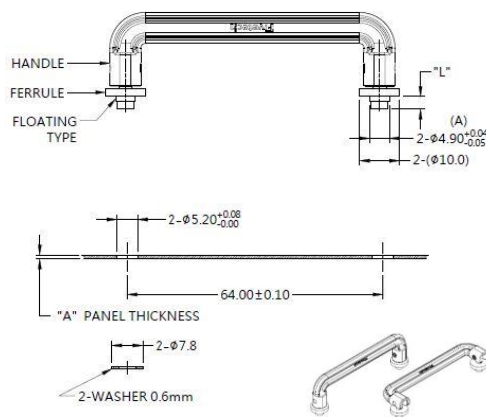
### Material and Finish

**Handle :**  
Plastic

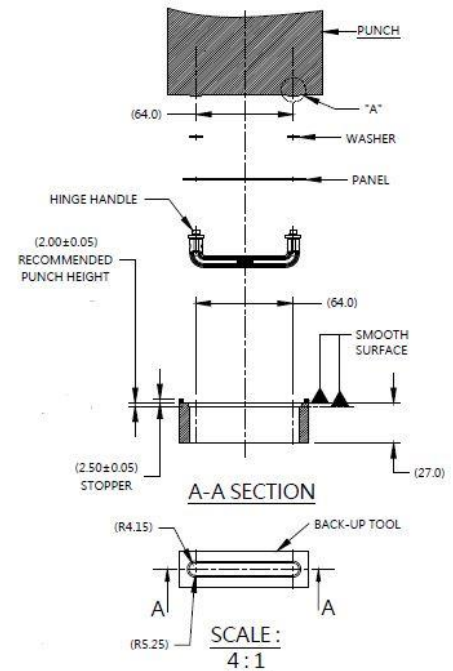
**Rivet:**  
300 Series Stainless Steel, Natural Finish

**Ferrule :**  
6000 Series Aluminum, Natural Finish

### Panel Preparation



### Installation



### Color Options

Color Options



### Dimensions (mm)

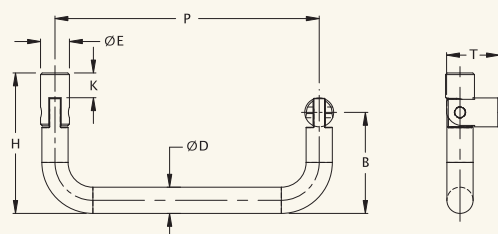
HANDLE LENGTH "T"	HANDLE PROJECTION		PANEL THICKNESS "A"	DIMENSINOS	
	"P-1"	"P-2"		" L "	" B "
			1.0	3.2	

- Fashionable design easy to use and push and pull plastic materials help to avoid metal's accumulated temperature over its limit which sometimes causes burning
- Save mechanical space so that it would interfere with spaces for other mechanics
- To manage color in the design structure apart from using tools

## 62, 5P SERIES patented.



### ■ 62 SERIES



### Material and Finish

#### Material:

Handle: Low carbon steel

Hinged: Low carbon steel

Pin: Low carbon steel

#### Finish:

Nickel plated

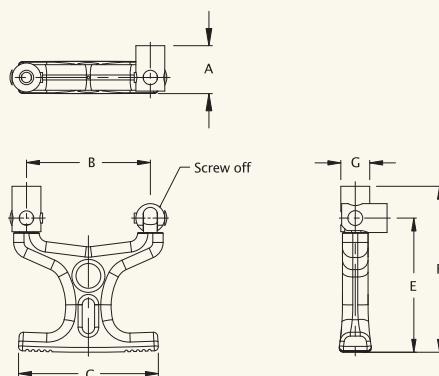
#### Special versions:

Customer requested of design.

mm

Dimensions							Part Number					
ØD	P	H	B	E	K	T	M3	6-32	M4	8-32	M5	10-32
6.35	38.2	42.2	33.5	7.0	5.4	12.0	62-60038-H1	62-60038-H4	62-60038-H5	62-60038-H6	-	-
	64.0	34.0	24.5	7.0	5.9	12.6	62-60064-1	62-60064-4	62-60064-5	62-60064-6	-	-
	101.0	34.0	24.5	7.0	5.9	12.6	62-60101-1	62-60101-4	62-60101-5	62-60101-6	-	-
	149.0	39.3	30.5	7.0	5.4	12.1	62-60149-H1	62-60149-H4	62-60149-H5	62-60149-H6	-	-
	162.0	59.0	19.5	7.0	8.5	42.0	60-60162-1H	60-60162-4H	60-60162-5H	60-60162-6H	-	-

### ■ 5P SERIES



### Material and Finish

#### Material:

Handle: PA66+PB Black

Hinged: Low carbon steel

Pin: Low carbon steel

#### Finish:

Hinged: Nickel plated

Pin: Nickel plated

#### Special versions:

Customer requested of design.

mm

Dimensions						Part Number			
A	B	C	E	F	G	M3	6-32	M4	8-32
11.6	30.0	34.0	32.5	40.2	7.0	5P-300-101	5P-300-401	5P-300-501	5P-300-601

## HINGE EJECTOR

- leverage configuration is easy to eject and disconnect
- by press down the plastic paddles to trigger the lock to unlock the ejectors
- auto spin wheel gadget to pull the ejector to disconnect
- to return the hinge ejector, plastic paddles can auto-retract to lock back its original position

## HINGE EJECTOR

Patented.

### Material and Finish

**HANDLE :**  
PLASTIC : PANTONE BLACK

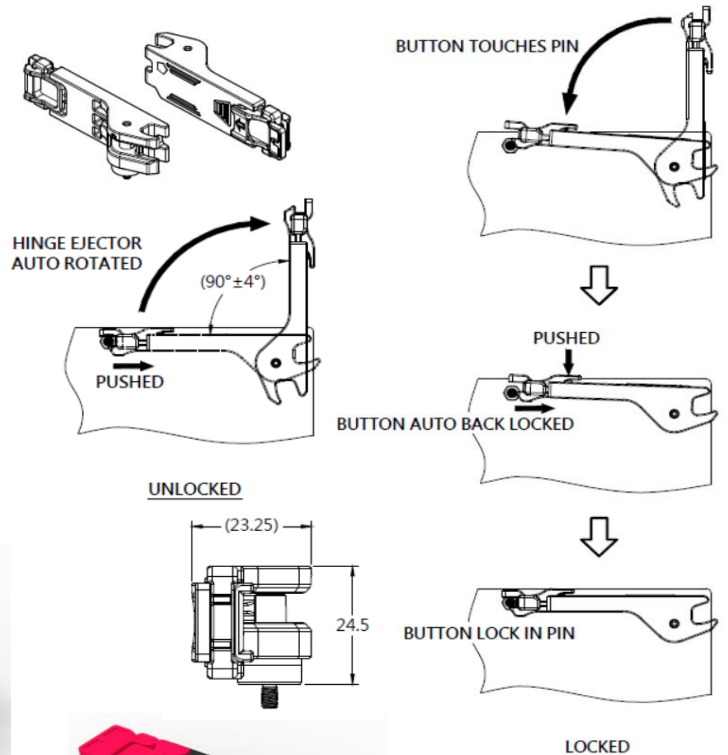
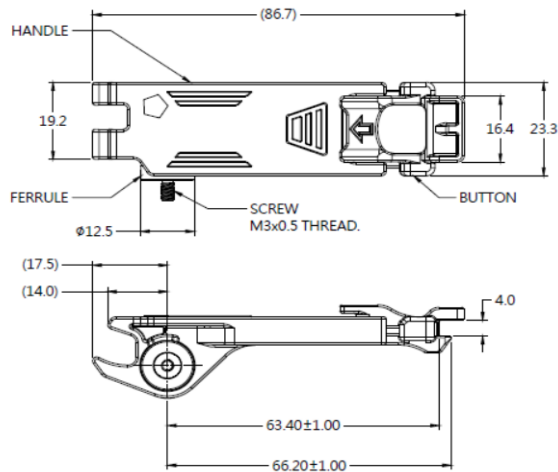
**FERRULE :**  
ZINC ALLOY, NATURAL FINISH

**PIN :**  
CARBON STEEL, ZINC FINISH

**BUTTON :**  
PLASTIC : BLUE.



### Panel Preparation



### Knob Color Options



### Dimensions (mm)

## SMART FOLDING HANDLE

- A fully automated production line saves labor costs and improves production efficiency**
- Plastic-made handle can improve heat resistance and electrical resistance**
- Color, pitch, length, size, and other specifications can be customized**

# Plastic Handle- Press-in Patented.



## Material and Finish

**Handle :**

## Plastic

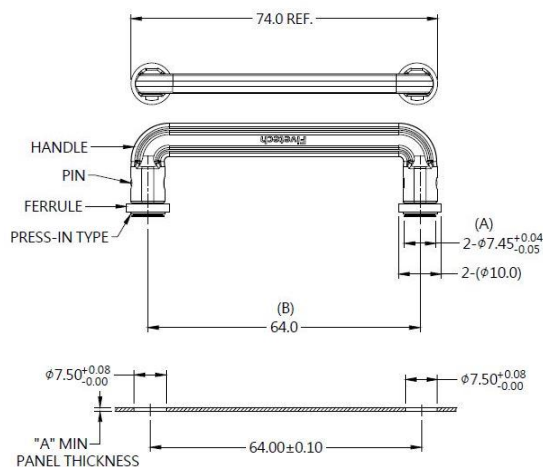
**Rivet:**

300 Series Stainless Steel, Natural Finish

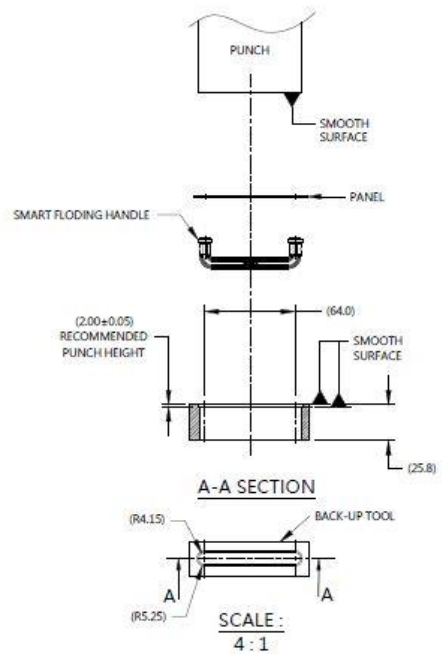
### Ferrule :

Carbon Steel, Zinc Finish

## Panel Preparation



## Installation



## Color Options

### Color Options



### Dimensions (mm)

LENGTH " T "	HANDLE PROJECTION		PANEL THICKNESS		DIMENSINOS	
	" P-1 "	" P-2 "	" A " MIN	" A " MAX	" L "	" B "
			1.0	~		