

Guide Ring

- Chamfered design allows for quick alignment with Ball Lock.
- Made from durable metal, resistant to scratches and debris.
- Customizable for various materials, including iron, plastic, PCB, aluminum, and die-cast parts.
- Paired with Ball Lock for quick, smooth one-second positioning as an alternative to screws.

Guide Ring

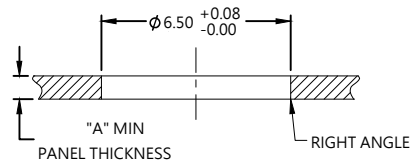
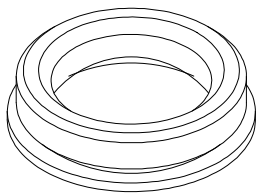
Patented.



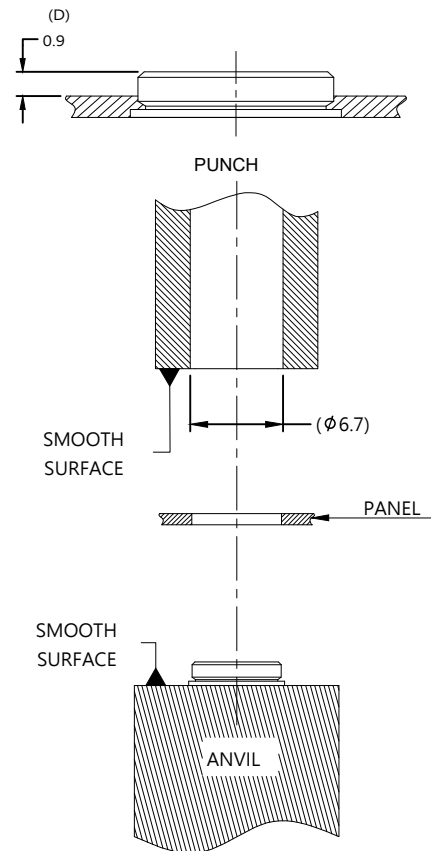
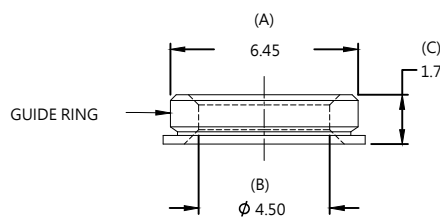
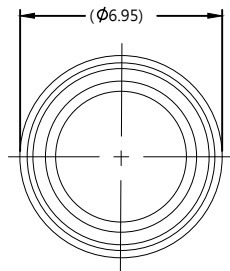
Material and Finish

Guide Ring: 300 Series STAINLESS STEEL , NATURAL FINISH.

Panel Preparation



PANEL PREPARATION



SCALE: 2 : 1

Dimensions (mm)

LENGTH "T"	PROJECTION		PANEL THICKNESS		DIMENSIONS	
	"P-1"	"P-2"	"A"MIN	"A"MAX	" L "	" B "
~	~	~	0.8	~	~	~