

SMT SPOOL

- SMT fully automated manufacturing process can increase production stability and production efficiency.
- Welding for reinstallation can increase product reliability.
- Spool designed for easy assembly, quick release purposes.
- Lateral fastening contributes to direction limited panels.

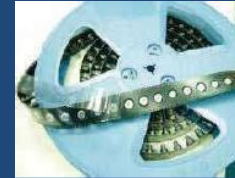
SMT SPOOL Patented.



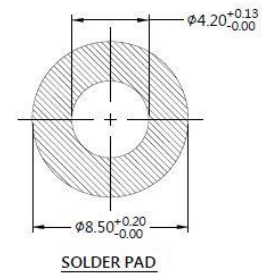
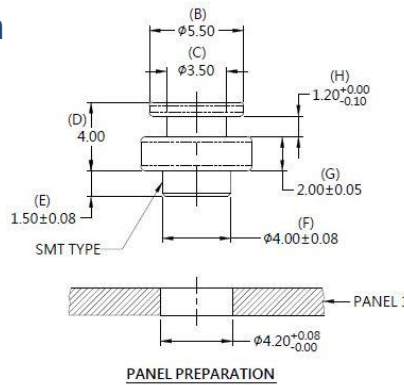
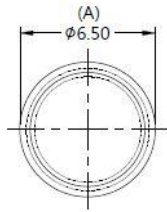
Material and Finish

Spool :
Carbon steel, Tin Finish.

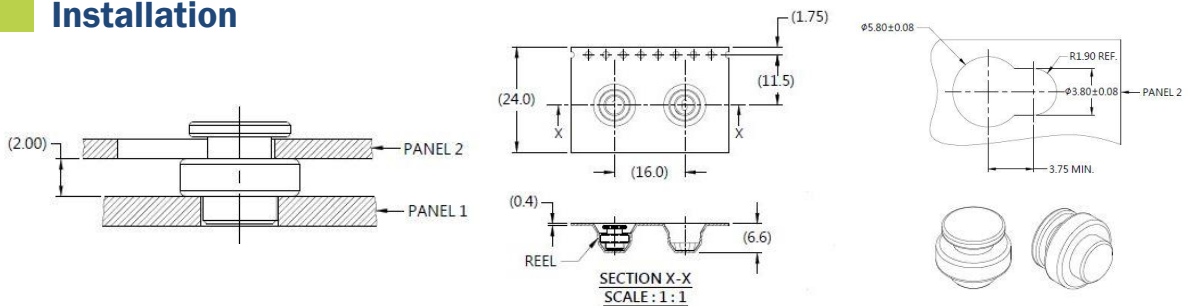
Reel



Panel Preparation



Installation



Dimensions (mm)

| P/N | PANEL THICKNESS | |
|---------------------|-----------------|----------|
| | PANEL 1 | PANEL 2 |
| 82-050-02-040-01-RL | 1.6 MIN. | 1.0 MAX. |