

SMT SPOOL

- SMT fully automated manufacturing process can increase production stability and production efficiency.
- Welding for reinstallation can increase product reliability.
- Spool designed for easy assembly, quick release purposes.
- Lateral fastening contributes to direction limited panels.

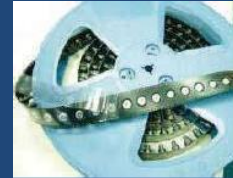
SMT SPOOL Patented.



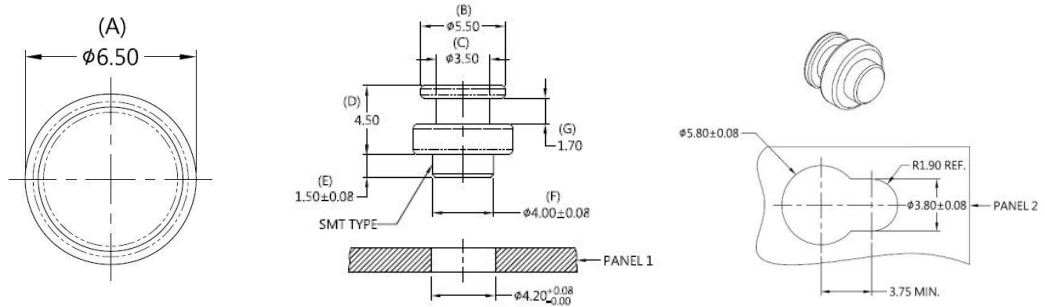
Material and Finish

Spool :
Carbon steel, Tin Finish.

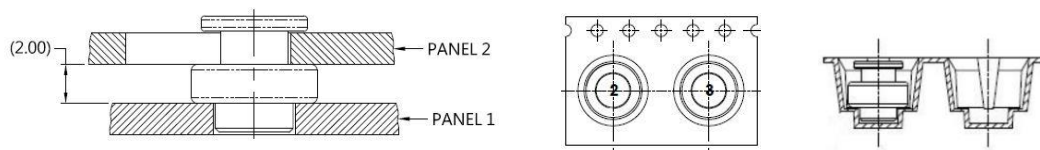
Reel



Panel Preparation



Installation



Dimensions (mm)

P/N	PANEL THICKNESS	
	PANEL 1	PANEL 2
82-050-02-045-01	1.6 MIN	1.6 MAX