

- Achieves rapid positioning with one-second fixation/unlocking.
- High-performance secure and reliable application with the flare-in method.
- Offers safety and strength through stable 360° high-strength riveting.
- High stability and high strength mechanism design.
- Wide range of applications, specs can be customized.

BALL LOCK (PRESS IN) Patented.



Material and Finish

PIN:

300 SERIES STAINLESS STEEL , NATURAL FINISH.

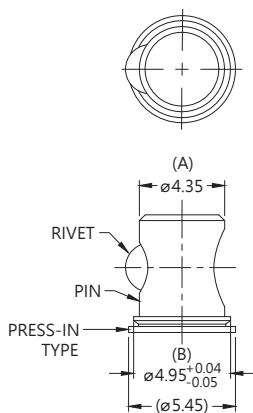
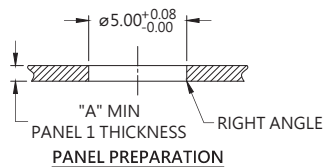
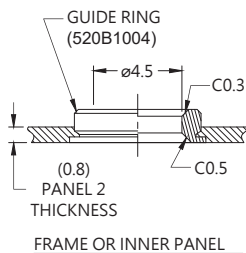
SPRING:

300 SERIES STAINLESS STEEL , NATURAL FINISH.

RIVET:

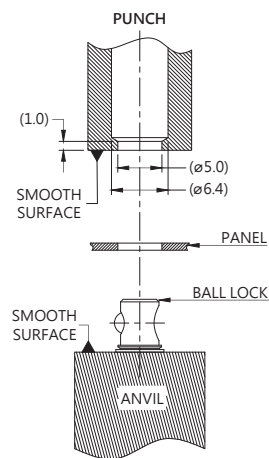
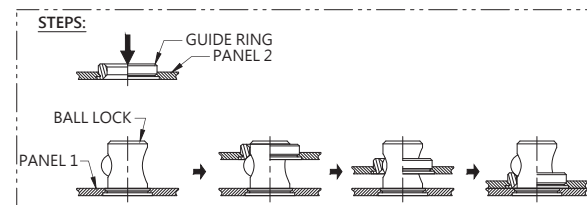
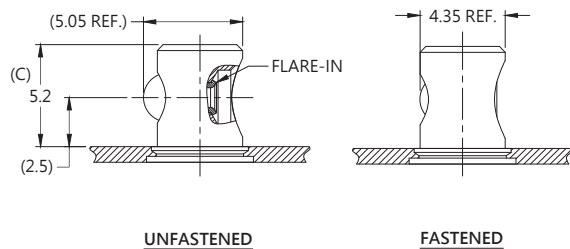
300 SERIES STAINLESS STEEL , NATURAL FINISH.

Panel Preparation



FLARE-IN :
RELIABLE EXPANSION STRUCTURE.

Installation and Projection



SCALE: 2:1

Dimensions (mm)

SCREW LENGTH "T"	SCREW PROJECTION		PANEL 1 THICKNESS		DIMENSINOS	
	"P-1"	"P-2"	"A" MIN	"A" MAX	" L "	" B "
			0.8			

- Achieves rapid positioning with one-second fixation/unlocking.
- High-performance secure and reliable application with the flare-in method.
- Offers safety and strength through stable 360° high-strength riveting.
- High stability and high strength mechanism design.
- Wide range of applications, specs can be customized.

BALL LOCK (FLARE IN) Patented.



Material and Finish

PIN:

6000 SERIES ALUMINUM , NATURAL FINISH.

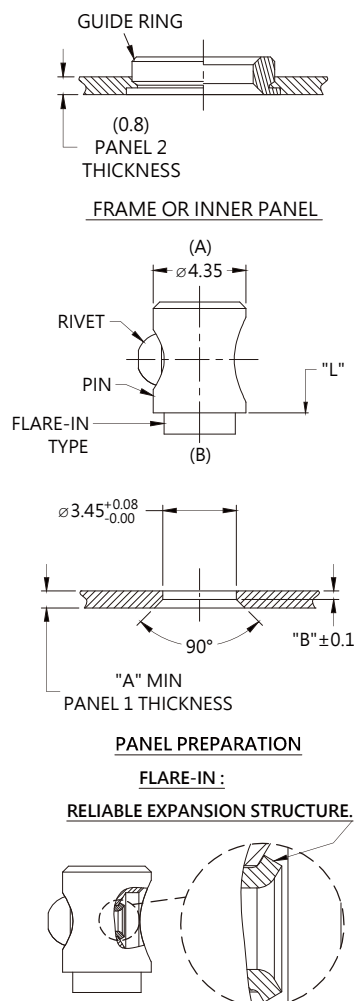
SPRING:

300 SERIES STAINLESS STEEL , NATURAL FINISH.

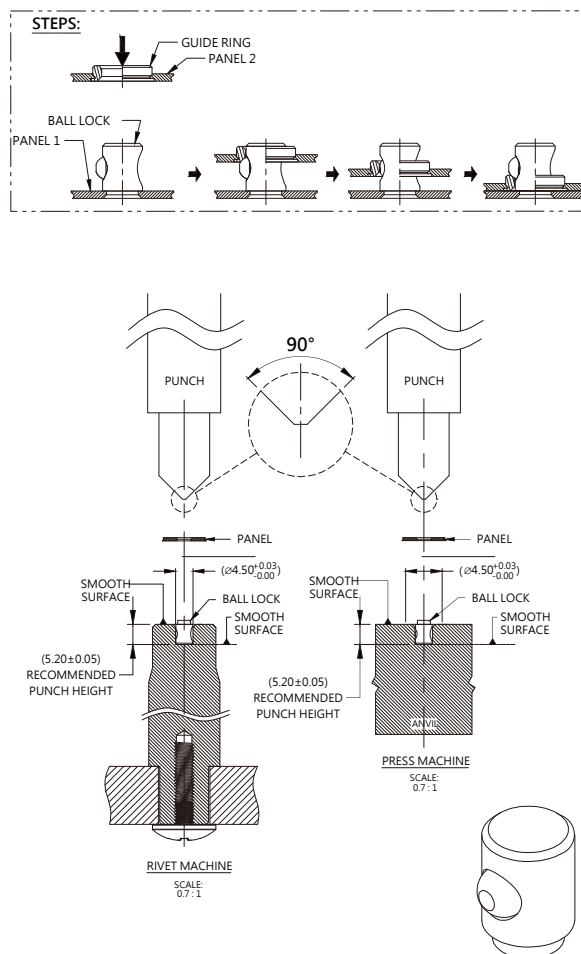
RIVET:

300 SERIES STAINLESS STEEL , NATURAL FINISH.

Panel Preparation



Installation and Projection



Dimensions (mm)

SCREW LENGTH "T"	SCREW PROJECTION		PANEL 1 THICKNESS		DIMENSINOS	
	"P-1"	"P-2"	"A" MIN	"A" MAX	" L "	" B "
			0.8	1.2	1.0	0.4



Fivetech

® Mechanical Parts Design & Manufacture

SPECIALS

- Achieves rapid positioning with one-second fixation/unlocking.
- High-performance secure and reliable application with the flare-in method.
- Offers safety and strength through stable 360° high-strength riveting.
- High stability and high strength mechanism design.
- Wide range of applications, specs can be customized.

BALL LOCK (SMT) Patented.



Material and Finish

PIN:

6000 SERIES ALUMINUM , NATURAL FINISH.

SPRING:

300 SERIES STAINLESS STEEL , NATURAL FINISH.

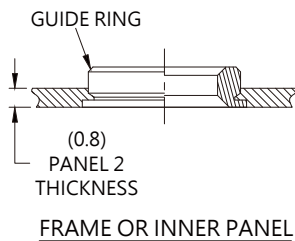
RIVET:

300 SERIES STAINLESS STEEL , NATURAL FINISH.

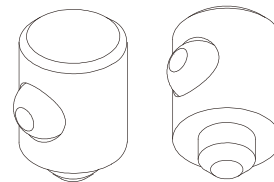
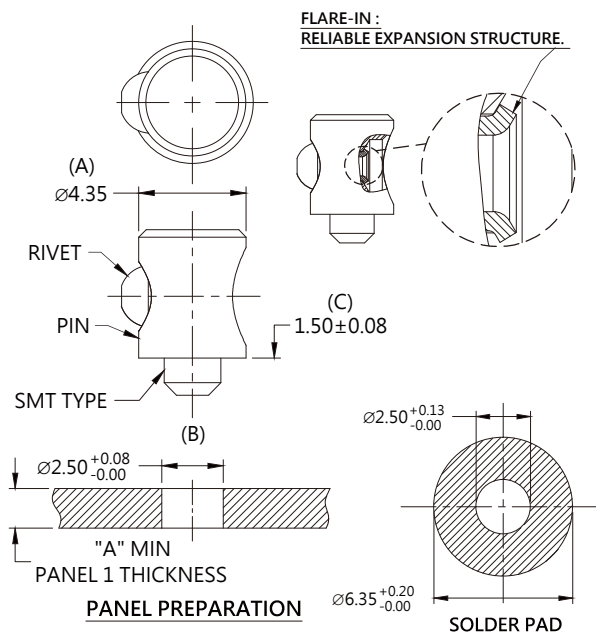
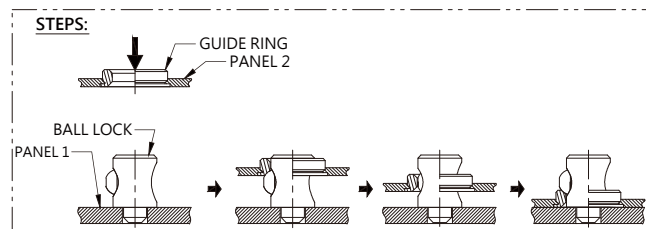
REEL



Panel Preparation



Installation and Projection



Dimensions (mm)

SCREW LENGTH "T"	SCREW PROJECTION		PANEL 1 THICKNESS		DIMENSINOS	
	"P-1"	"P-2"	"A" MIN	"A" MAX	" L "	" B "
			1.6			