

## SLIDE LOCK

- The horn shape provides an outstanding operation experience
- Designs with spring and will automatically rebound to the lock position when released
- The effort-saving structure makes you one-second unlock easily
- Side direction operation, suitable for special space restrictions

## Draw Latch -Slide Lock Patented.



### Material and Finish

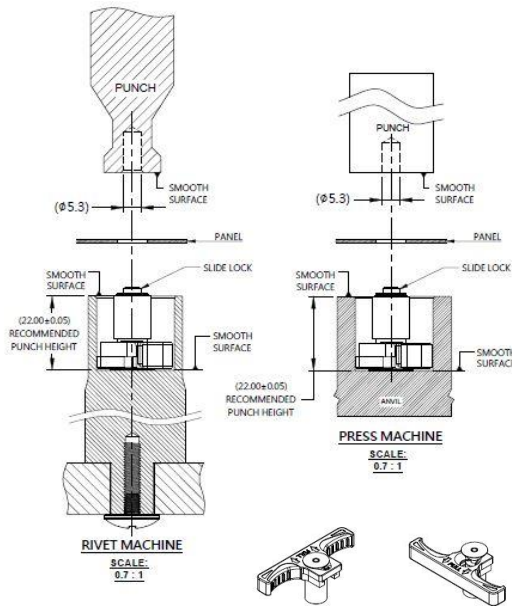
**Handle :**  
Plastic

**Cap :**  
Carbon Steel, Nickel Finish

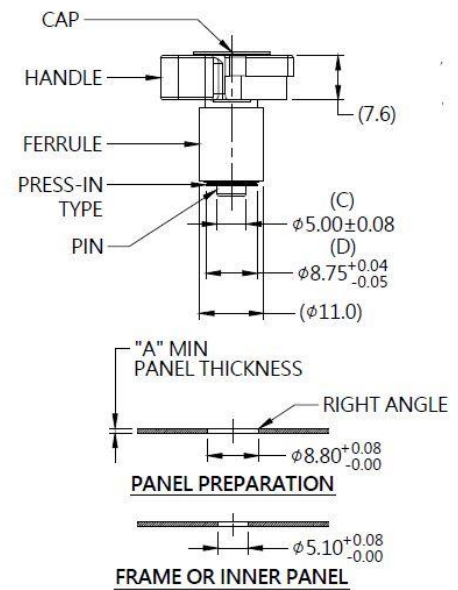
**Pin :**  
300 Series Stainless Steel, Natural Finish

**Spring/Ferrule :**  
300 Series Stainless Steel, Natural Finish

### Installation



### Panel Preparation



### Dimensions (mm)

LENGTH "T"	PROJECTION		PANEL THICKNESS		DIMENSINOS	
	"H-1"	"H-2"	"A" MIN	"A" MAX	" L "	" B "
24.7	22.0	24.7	0.8	~		